



bugalicia

# Memoria de xestión 2007

## Anexos

consorcio de bibliotecas universitarias de galicia

# MEMBROS DO CONSORCIO DE BIBLIOTECAS UNIVERSITARIAS DE GALICIA



**XUNTA DE GALICIA**  
CONSELLERÍA DE INNOVACIÓN  
E INDUSTRIA  
Dirección Xeral de Investigación,  
Desenvolvemento e Innovación



**XUNTA DE GALICIA**  
CONSELLERÍA DE EDUCACIÓN  
E ORDENACIÓN UNIVERSITARIA  
Dirección Xeral de  
Ordenación e Calidade do  
Sistema Universitario de Galicia



**XUNTA DE GALICIA**  
CONSELLERÍA DE EDUCACIÓN  
E ORDENACIÓN UNIVERSITARIA  
Dirección Xeral de  
Promoción Científica e Tecnolóxica  
do Sistema Universitario de Galicia



**XUNTA DE GALICIA**  
CONSELLERÍA DE CULTURA  
E DEPORTE  
Dirección Xeral de Creación  
e Difusión Cultural



**XUNTA DE GALICIA**  
PRESIDENCIA  
Secretaría Xeral de Comunicación  
Dirección Xeral de  
Comunicación Audiovisual

## ÍNDICE DE CONTIDOS

Anexo I. Estudo do 80% das descargas .....	1
Anexo II. Listados dos títulos non consorciados cun uso medio ou alto (superior a 10 descargas).....	30
Anexo III. Rexeites de Scifinder durante o ano 2007.....	35
Anexo IV. Distribución dos Usuarios Investigadores de BUGalicia por Ámbitos de Coñecemento .....	37

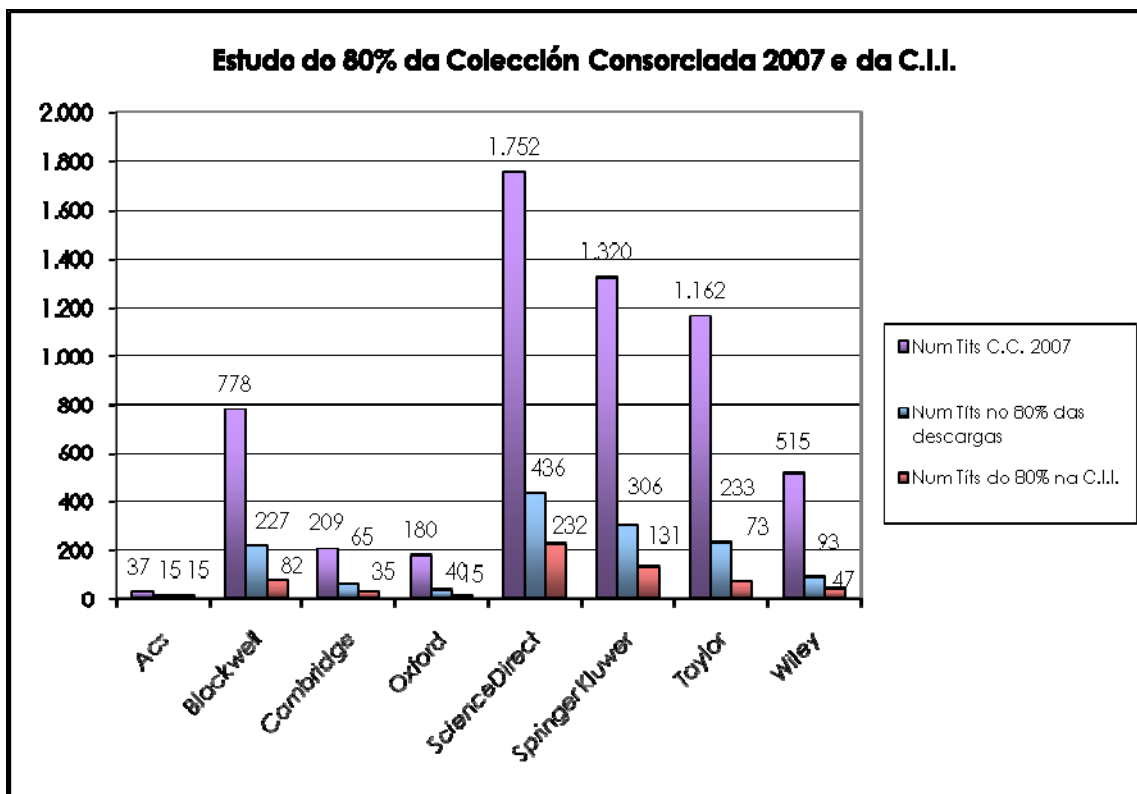
## Anexo I. Estudo do 80% das descargas

**BUGalicia: Estudo do 80% da Colección Consorciada (C.C.) 2007 con respecto á Colección Inicial Impresa (C.I.I.)**

Queremos con este estudo coñecer cal foi o conxunto de publicacións que proporcionaron o 80% das descargas de artigos a texto completo de cada un destes oito paquetes de revistas electrónicas (Ver relación de títulos no Anexo I: Listados dos títulos que aportan o 80% das descargas).

Editor	Univ	Num Tít C.C. 2007	Total Descargas por Paquete	Num Tít no 80% das descargas	% dos tít no 80% das descargas	Valor do 80% das descargas	Num Tít da C.I.I.	Num Tít do 80% na C.I.I.	Num Tít do 80% non na C.I.I.
Acs *	BUGalicia	37	73.928	15	40,54%	59.142	24	15	0
Blackwell	BUGalicia	778	47.437	227	29,18%	37.949	214	82	145
Cambridge	BUGalicia	209	5.318	65	31,10%	4.254	74	35	30
Oxford	BUGalicia	180	17.382	40	22,22%	13.906	75	15	25
ScienceDirect	BUGalicia	1.752	330.135	436	24,89%	264.108	515	232	204
Springer Kluwer	BUGalicia	1.320	46.096	306	23,18%	36.876	268	131	175
Taylor	BUGalicia	1.162	10.761	233	20,05%	8.609	185	73	160
Wiley	BUGalicia	515	52.405	93	18,06%	41.924	108	47	46

\* O número de descargas de ACS tería que incrementarse en 12.800 (cifra porcentualmente moi importante) debido ás descargas de "ACS Journal Archives" que é un compendio dos títulos anteriores (retrospectivos ou cambios de título), pero que non o podemos facer por non estar os datos desagregados por títulos. Reflicte unha característica propia desta plataforma que non ten ningún dos outros paquetes contratados, que é o acceso a todo o fondo da colección.



Acs

editor	issn1	issn2	titulo	total	na C.I.I.	%	% acum
Acs	0002-7863	1520-5126	Journal of the American Chemical Society	13.553	C.I.I.	22,47%	18,33%
Acs	0022-3263	1520-6904	Journal of Organic Chemistry	8.043	C.I.I.	13,34%	29,21%
Acs	1523-7060	1523-7052	Organic Letters	6.973	C.I.I.	11,56%	38,64%
Acs	0743-7463	1520-5827	Langmuir	4.168	C.I.I.	6,91%	44,28%
Acs	0021-8561	1520-5118	Journal of Agricultural and Food Chemistry	3.897	C.I.I.	6,46%	49,55%
Acs	0022-2623	1520-4804	Journal of Medicinal Chemistry	3.671	C.I.I.	6,09%	54,52%
Acs	1520-6106	1520-5207	Journal of Physical Chemistry - A & B (B)	3.590	C.I.I.	5,95%	59,38%
Acs	0021-9568	1520-5134	Journal of Chemical and Engineering Data	2.664	C.I.I.	4,42%	62,98%
Acs	0020-1669	1520-510X	Inorganic Chemistry	2.347	C.I.I.	3,89%	66,15%
Acs	0013-936X	1520-5851	Environmental Science and Technology - Columbus	2.258	C.I.I.	3,74%	69,21%
Acs	0009-2665	1520-6890	Chemical Reviews	2.129	C.I.I.	3,53%	72,09%
Acs	1089-5639	1520-5215	Journal of Physical Chemistry - A & B (A)	1.937	C.I.I.	3,21%	74,71%
Acs	0897-4756	1520-5002	Chemistry of Materials	1.724	C.I.I.	2,86%	77,04%
Acs	0024-9297	1520-5835	Macromolecules	1.688	C.I.I.	2,80%	79,32%
Acs	0003-2700	1520-6882	Analytical Chemistry	1.666	C.I.I.	2,76%	81,58%

de 15 titulos 15 son da C.I.I. (0%-100%)  
 Con respecto ao 2006 aparece/n 2 titulos e desaparece/n 0. Hai un incremento de 2 titulo/s.

Blackwell

editor	issn1	issn2	titulo	total	na C.I.I.	%	% acum
Blackwell	0962-1083	1365-294X	Molecular Ecology	1.856		4,89%	3,91%
Blackwell	1364-5072	1365-2672	Journal of Applied Microbiology	760		2,00%	5,51%
Blackwell	0888-8892	1523-1739	Conservation Biology	677	C.I.I.	1,78%	6,94%
Blackwell	0953-816X	1460-9568	European Journal of Neuroscience	656	C.I.I.	1,73%	8,32%
Blackwell	1471-8278	1471-8286	Molecular Ecology Notes	654		1,72%	9,70%
Blackwell	0022-1147	1750-3841	Journal of Food Science	640		1,68%	11,05%
Blackwell	1742-464X	1742-4658	FEBS Journal	638	C.I.I.	1,68%	12,40%
Blackwell	0022-3042	1471-4159	Journal of Neurochemistry	635	C.I.I.	1,67%	13,74%
Blackwell	0022-1112	1095-8649	Journal of Fish Biology	598	C.I.I.	1,57%	15,00%
Blackwell	1351-0754	1365-2389	European Journal of Soil Science	580	C.I.I.	1,53%	16,22%
Blackwell	0028-646X	1469-8137	New Phytologist	524	C.I.I.	1,38%	17,32%
Blackwell	1010-061X	1420-9101	Journal of Evolutionary Biology	494	C.I.I.	1,30%	18,37%
Blackwell	0046-5070	1365-2427	Freshwater Biology	466	C.I.I.	1,23%	19,35%
Blackwell	0022-3646	1529-8817	Journal of Phycology	453	C.I.I.	1,19%	20,30%
Blackwell	0002-7820	1551-2916	Journal of the American Ceramic Society	452		1,19%	21,26%
Blackwell	0140-7775	1365-2761	Journal of Fish Diseases	444	C.I.I.	1,17%	22,19%
Blackwell	0300-0664	1365-2265	Clinical Endocrinology	428	C.I.I.	1,13%	23,09%
Blackwell	1461-023X	1461-0248	Ecology Letters	425		1,12%	23,99%
Blackwell	1462-2912	1462-2920	Environmental Microbiology	422	C.I.I.	1,11%	24,88%
Blackwell	0030-1299	1600-0706	Oikos	407	C.I.I.	1,07%	25,74%
Blackwell	0905-7161	1600-0501	Clinical Oral Implants Research	406		1,07%	26,59%
Blackwell	0950-5423	1365-2621	International Journal of Food Science and Technology	366	C.I.I.	0,96%	27,36%
Blackwell	0021-8901	1365-2664	Journal of Applied Ecology	363	C.I.I.	0,96%	28,13%
Blackwell	0266-8254	1472-765X	Letters in Applied Microbiology	362		0,95%	28,89%
Blackwell	1355-557X	1365-2109	Aquaculture Research	355		0,93%	29,64%
Blackwell	0173-9565	1439-0485	Marine Ecology	344	C.I.I.	0,91%	30,37%
Blackwell	1058-8183	1740-8261	Veterinary Radiology AND Ultrasound	332	C.I.I.	0,87%	31,07%
Blackwell	0965-2140	1360-0443	Addiction	316	C.I.I.	0,83%	31,73%
Blackwell	0014-3820	1558-5646	Evolution	314		0,83%	32,39%
Blackwell	0378-1097	1574-6968	FEMS Microbiology Letters	298		0,78%	33,02%
Blackwell	0960-7412	1365-313X	Plant Journal,The	297	C.I.I.	0,78%	33,65%
Blackwell	0905-7188	1600-0838	Scandinavian Journal of Medicine and Science in Sports	284		0,75%	34,25%
Blackwell	0022-1198	1556-4029	Journal of Forensic Sciences	280		0,74%	34,84%
Blackwell	0145-6008	1530-0277	Alcoholism	278		0,73%	35,42%
Blackwell	0021-8456	1475-679X	Journal of Accounting Research	266	C.I.I.	0,70%	35,98%
Blackwell	0919-9268	1444-2906	Fisheries Science	261		0,69%	36,53%
Blackwell	0305-0270	1365-2699	Journal of Biogeography	260		0,68%	37,08%
Blackwell	0002-8614	1532-5415	Journal of the American Geriatrics Society	259		0,68%	37,63%
Blackwell	0013-9580	1528-1167	Epilepsia	258	C.I.I.	0,68%	38,17%
Blackwell	0168-6496	1574-6941	FEMS Microbiology Ecology	253		0,67%	38,71%
Blackwell	0031-9317	1399-3054	Physiologia Plantarum	248	C.I.I.	0,65%	39,23%
Blackwell	0077-8923	1749-6632	Annals of the New York Academy of Sciences	246		0,65%	39,75%
Blackwell	0140-7783	1365-2885	Journal of Veterinary Pharmacology and Therapeutics	242		0,64%	40,26%
Blackwell	0024-4066	1095-8312	Biological Journal of the Linnean Society	240	C.I.I.	0,63%	40,76%
Blackwell	0105-2896	1600-065X	Immunological Reviews	232		0,61%	41,25%
Blackwell	0936-6768	1439-0531	Reproduction in Domestic Animals	231		0,61%	41,74%
Blackwell	0007-0963	1365-2133	British Journal of Dermatology	225	C.I.I.	0,59%	42,21%
Blackwell	0022-0477	1365-2745	Journal of Ecology	221	C.I.I.	0,58%	42,68%
Blackwell	1066-5234	1550-7408	Journal of Eukaryotic Microbiology,The	206	C.I.I.	0,54%	43,11%
Blackwell	1467-2960	1467-2979	Fish and Fisheries	205		0,54%	43,55%
Blackwell	0048-5772	1469-8986	Psychophysiology	205	C.I.I.	0,54%	43,98%
Blackwell	1567-1356	1567-1364	FEMS Yeast Research	204		0,54%	44,41%
Blackwell	0019-1019	1474-919X	Ibis	202		0,53%	44,83%
Blackwell	0950-382X	1365-2958	Molecular Microbiology	199	C.I.I.	0,52%	45,25%
Blackwell	0906-7590	1600-0587	Ecography	197	C.I.I.	0,52%	45,67%
Blackwell	0303-6979	1600-051X	Journal of Clinical Periodontology	193		0,51%	46,08%
Blackwell	0007-1048	1365-2141	British Journal of Haematology	193		0,51%	46,48%
Blackwell	0824-0469	1748-7692	Marine Mammal Science	192		0,51%	46,89%
Blackwell	0105-4538	1398-9995	Allergy	189		0,50%	47,29%
Blackwell	0269-8463	1365-2435	Functional Ecology	184		0,48%	47,67%
Blackwell	0002-9270	1572-0241	American Journal of Gastroenterology,The	183		0,48%	48,06%
Blackwell	1354-1013	1365-2486	Global Change Biology	174		0,46%	48,43%
Blackwell	0021-9630	1469-7610	Journal of Child Psychology and Psychiatry,The	172		0,45%	48,79%
Blackwell	0105-1873	1600-0536	Contact Dermatitis	171		0,45%	49,15%
Blackwell	0175-8659	1439-0426	Journal of Applied Ichthyology	169		0,44%	49,51%
Blackwell	1054-6006	1365-2419	Fisheries Oceanography	169		0,44%	49,86%
Blackwell	0953-8194	1365-2826	Journal of Neuroendocrinology	166	C.I.I.	0,44%	50,21%
Blackwell	0803-5253	1651-2227	Acta Paediatrica	163		0,43%	50,56%
Blackwell	0309-0167	1365-2559	Histopathology	162	C.I.I.	0,43%	50,90%
Blackwell	0742-3098	1600-079X	Journal of Pineal Research	161	C.I.I.	0,42%	51,24%

CONSORCIO DE BIBLIOTECAS UNIVERSITARIAS DE GALICIA

Blackwell	0262-5253	1468-0092	Oxford Journal of Archaeology	160	C.I.I.	0,42%	51,57%
Blackwell	0011-9059	1365-4632	International Journal of Dermatology	160		0,42%	51,91%
Blackwell	1367-9430	1469-1795	Animal Conservation	158		0,42%	52,24%
Blackwell	0168-6445	1574-6976	FEMS Microbiology Reviews	156		0,41%	52,57%
Blackwell	1198-743X	1469-0691	Clinical Microbiology and Infection	155		0,41%	52,90%
Blackwell	0021-8790	1365-2656	Journal of Animal Ecology	153	C.I.I.	0,40%	53,22%
Blackwell	0003-4800	1469-1809	Annals of Human Genetics	150	C.I.I.	0,39%	53,54%
Blackwell	0926-9959	1468-3083	Journal of the European Academy of Dermatology and Venerology	149		0,39%	53,85%
Blackwell	0143-2885	1365-2591	International Endodontic Journal	145	C.I.I.	0,38%	54,16%
Blackwell	0024-4074	1095-8339	Botanical Journal of the Linnean Society	145		0,38%	54,46%
Blackwell	0954-7894	1365-2222	Clinical AND Experimental Allergy	144	C.I.I.	0,38%	54,77%
Blackwell	0952-8369	1469-7998	Journal of Zoology	143		0,38%	55,07%
Blackwell	1520-541X	1525-142X	Evolution AND Development	143		0,38%	55,37%
Blackwell	0140-7791	1365-3040	Plant, Cell and Environment	142	C.I.I.	0,37%	55,67%
Blackwell	1351-5101	1468-1331	European Journal of Neurology	137		0,36%	55,96%
Blackwell	1600-6135	1600-6143	American Journal of Transplantation	136		0,36%	56,25%
Blackwell	0300-3256	1463-6409	Zoologica Scripta	136	C.I.I.	0,36%	56,53%
Blackwell	0309-2402	1365-2648	Journal of Advanced Nursing	135	C.I.I.	0,36%	56,82%
Blackwell	0024-1164	1502-3931	Lethaia	131		0,34%	57,09%
Blackwell	0269-2813	1365-2036	Alimentary Pharmacology and Therapeutics	130		0,34%	57,37%
Blackwell	0024-4082	1096-3642	Zoological Journal of the Linnean Society	129		0,34%	57,64%
Blackwell	0268-9146	1365-2052	Animal Genetics	128		0,34%	57,91%
Blackwell	0275-5408	1475-1313	Ophthalmic and Physiological Optics	124		0,33%	58,17%
Blackwell	0742-3071	1464-5491	Diabetic Medicine	124		0,33%	58,43%
Blackwell	0009-9163	1399-0004	Clinical Genetics	122		0,32%	58,69%
Blackwell	0001-5172	1399-6576	Acta Anaesthesiologica Scandinavica	119		0,31%	58,94%
Blackwell	0306-686X	1468-5957	Journal of Business Finance AND Accounting	119	C.I.I.	0,31%	59,19%
Blackwell	0906-6691	1600-0633	Ecology of Freshwater Fish	118		0,31%	59,44%
Blackwell	0037-0746	1365-3091	Sedimentology	117		0,31%	59,69%
Blackwell	0964-8410	1467-8683	Corporate Governance: An International Review	116		0,31%	59,93%
Blackwell	1368-5031	1742-1241	International Journal of Clinical Practice	115		0,30%	60,17%
Blackwell	1354-523X	1601-0825	Oral Diseases	113	C.I.I.	0,30%	60,41%
Blackwell	1600-5368	1600-5368	Acta Crystallographica Section E	113		0,30%	60,65%
Blackwell	0340-2096	1439-0264	Anatomia, Histologia, Embryologia	112	C.I.I.	0,29%	60,88%
Blackwell	0031-5826	1744-6570	Personnel Psychology	111	C.I.I.	0,29%	61,12%
Blackwell	0022-4510	1748-5827	Journal of Small Animal Practice	110		0,29%	61,35%
Blackwell	0904-2512	1600-0714	Journal of Oral Pathology and Medicine	110	C.I.I.	0,29%	61,58%
Blackwell	0161-3499	1532-950X	Veterinary Surgery	110	C.I.I.	0,29%	61,81%
Blackwell	1464-4096	1464-410X	BJU International	109	C.I.I.	0,29%	62,04%
Blackwell	1470-0328	1471-0528	BJOG	109	C.I.I.	0,29%	62,27%
Blackwell	0006-341X	1541-0420	Biometrics	107	C.I.I.	0,28%	62,50%
Blackwell	0021-8782	1469-7580	Journal of Anatomy	106	C.I.I.	0,28%	62,72%
Blackwell	0108-2701	1600-5759	Acta Crystallographica Section C	105	C.I.I.	0,28%	62,94%
Blackwell	1466-822X	1466-8238	Global Ecology and Biogeography	105		0,28%	63,17%
Blackwell	0303-6898	1467-9469	Scandinavian Journal of Statistics	104	C.I.I.	0,27%	63,39%
Blackwell	0907-4449	1399-0047	Acta Crystallographica Section D	103		0,27%	63,60%
Blackwell	0017-8748	1526-4610	Headache: The Journal of Head and Face Pain	103		0,27%	63,82%
Blackwell	0009-9104	1365-2249	Clinical and Experimental Immunology	103		0,27%	64,04%
Blackwell	0018-2656	1468-2303	History and Theory	102	C.I.I.	0,27%	64,25%
Blackwell	0894-4865	1741-6248	Family Business Review	102		0,27%	64,47%
Blackwell	1366-9516	1472-4642	Diversity and Distributions	100		0,26%	64,68%
Blackwell	0815-9319	1440-1746	Journal of Gastroenterology and Hepatology	96		0,25%	64,88%
Blackwell	0021-8898	1600-5767	Journal of Applied Crystallography	96		0,25%	65,08%
Blackwell	0333-1024	1468-2982	Cephalalgia	95		0,25%	65,28%
Blackwell	0307-6938	1365-2230	Clinical and Experimental Dermatology	94	C.I.I.	0,25%	65,48%
Blackwell	0035-8711	1365-2966	Monthly Notices of the Royal Astronomical Society	94		0,25%	65,68%
Blackwell	0305-182X	1365-2842	Journal of Oral Rehabilitation	93		0,24%	65,87%
Blackwell	0001-690X	1600-0447	Acta Psychiatrica Scandinavica	93	C.I.I.	0,24%	66,07%
Blackwell	0956-7976	1467-9280	Psychological Science	93		0,24%	66,27%
Blackwell	0006-3606	1744-7429	Biotropica	91		0,24%	66,46%
Blackwell	1462-8910	1463-1318	Colorectal Disease	90		0,24%	66,65%
Blackwell	0019-2805	1365-2567	Immunology	89	C.I.I.	0,23%	66,84%
Blackwell	0020-5850	1468-2346	International Affairs	88	C.I.I.	0,23%	67,02%
Blackwell	0018-2370	1540-6563	Historian,The	88		0,23%	67,21%
Blackwell	0266-0032	1475-2743	Soil Use and Management	88		0,23%	67,39%
Blackwell	1369-1473	1467-842X	Australian AND New Zealand Journal of Statistics	86		0,23%	67,57%
Blackwell	1322-0829	1440-183	Psychological Research	86		0,23%	67,76%
Blackwell	0022-2720	1365-2818	Journal of Microscopy	85		0,22%	67,93%
Blackwell	0009-3920	1467-8624	Child Development	84	C.I.I.	0,22%	68,11%
Blackwell	1347-9032	1349-7006	Cancer Science	84		0,22%	68,29%
Blackwell	1442-9985	1442-9993	Austral Ecology	83		0,22%	68,46%
Blackwell	0003-813X	1475-4754	Archaeometry	81	C.I.I.	0,21%	68,63%
Blackwell	0303-6987	1600-0560	Journal of Cutaneous Pathology	81	C.I.I.	0,21%	68,80%
Blackwell	0013-0133	1468-0297	Economic Journal,The	80	C.I.I.	0,21%	68,97%

CONSORCIO DE BIBLIOTECAS UNIVERSITARIAS DE GALICIA

Blackwell	1354-5078	1469-8129	Nations and Nationalism	80	C.I.I.	0,21%	69,14%
Blackwell	0004-5608	1467-8306	Annals of the Association of American Geographers	79	C.I.I.	0,21%	69,31%
Blackwell	1467-7881	1467-789X	Obesity Reviews	78		0,21%	69,47%
Blackwell	0954-6820	1365-2796	Journal of Internal Medicine	77	C.I.I.	0,20%	69,64%
Blackwell	1121-7081	1467-9914	LABOUR: Review of Labour Economics and Industrial Relations	76		0,20%	69,80%
Blackwell	0931-184X	1439-0442	Journal of Veterinary Medicine Series A	76		0,20%	69,96%
Blackwell	0964-2633	1365-2788	Journal of Intellectual Disability Research	75		0,20%	70,11%
Blackwell	0965-7576	1467-9396	Review of International Economics	75	C.I.I.	0,20%	70,27%
Blackwell	1395-3907	1600-0420	Acta Ophthalmologica Scandinavica	74	C.I.I.	0,19%	70,43%
Blackwell	0305-1870	1440-1681	Clinical and Experimental Pharmacology and Physiology	74		0,19%	70,58%
Blackwell	0022-3751	1469-7793	Journal of Physiology, The	74	C.I.I.	0,19%	70,74%
Blackwell	0003-2409	1365-2044	Anaesthesia	73		0,19%	70,89%
Blackwell	0931-1793	1439-0450	Zoonoses and Public Health	73		0,19%	71,05%
Blackwell	1353-5773	1365-2095	Aquaculture Nutrition	73		0,19%	71,20%
Blackwell	0947-5745	1439-0469	Journal of Zoological Systematics and Evolutionary Research	73		0,19%	71,36%
Blackwell	1398-9219	1600-0854	Traffic	72		0,19%	71,51%
Blackwell	1546-542X	1744-7402	International Journal of Applied Ceramic Technology	72		0,19%	71,66%
Blackwell	1748-1708	1748-1716	Acta Physiologica	72		0,19%	71,81%
Blackwell	0145-8892	1745-4549	Journal of Food Processing AND Preservation	72	C.I.I.	0,19%	71,96%
Blackwell	0031-0239	1475-4983	Palaeontology	72		0,19%	72,11%
Blackwell	0032-0862	1365-3059	Plant Pathology	72		0,19%	72,27%
Blackwell	0001-2815	1399-0039	Tissue Antigens	71		0,19%	72,42%
Blackwell	0001-6314	1600-0404	Acta Neurologica Scandinavica	69		0,18%	72,56%
Blackwell	0002-9092	1467-8276	American Journal of Agricultural Economics	69	C.I.I.	0,18%	72,71%
Blackwell	0305-1838	1365-2907	Mammal Review	69		0,18%	72,85%
Blackwell	0300-9475	1365-3083	Scandinavian Journal of Immunology	69		0,18%	73,00%
Blackwell	0435-3676	1468-0459	Geografiska Annaler: Series A, Physical Geography	69		0,18%	73,14%
Blackwell	0748-3007	1096-0031	Cladistics	68		0,18%	73,29%
Blackwell	0933-7407	1439-0507	Mycoses	68		0,18%	73,43%
Blackwell	1444-1586	1447-0594	Geriatrics and Gerontology International	68		0,18%	73,57%
Blackwell	1323-1316	1440-1819	Psychiatry and Clinical Neurosciences	68		0,18%	73,72%
Blackwell	1360-2322	1468-3148	Journal of Applied Research in Intellectual Disabilities	66		0,17%	73,86%
Blackwell	0931-2439	1439-0396	Journal of Animal Physiology and Animal Nutrition	65		0,17%	73,99%
Blackwell	0043-1737	1365-3180	Weed Research	65		0,17%	74,13%
Blackwell	0013-8703	1570-7458	Entomologia Experimentalis et Applicata	64		0,17%	74,26%
Blackwell	0908-8857	1600-048X	Journal of Avian Biology	64		0,17%	74,40%
Blackwell	1350-1925	1365-2982	Neurogastroenterology and Motility	64		0,17%	74,53%
Blackwell	0969-997X	1365-2400	Fisheries Management and Ecology	64		0,17%	74,67%
Blackwell	1369-7412	1467-9868	Journal of the Royal Statistical Society: Series B (Statistical Methodology)	63	C.I.I.	0,17%	74,80%
Blackwell	1747-0277	1747-0285	Chemical Biology AND Drug Design	63	C.I.I.	0,17%	74,94%
Blackwell	0307-6946	1365-2311	Ecological Entomology	63		0,17%	75,07%
Blackwell	0141-9838	1365-3024	Parasite Immunology	63	C.I.I.	0,17%	75,20%
Blackwell	0033-3352	1540-6210	Public Administration Review	63	C.I.I.	0,17%	75,33%
Blackwell	0018-2648	1468-229X	History	62	C.I.I.	0,16%	75,46%
Blackwell	0909-8836	1600-0722	European Journal of Oral Sciences	62		0,16%	75,59%
Blackwell	0905-4383	1600-0781	Photodermatology, Photoimmunology and Photomedicine	62		0,16%	75,73%
Blackwell	1442-6404	1442-9071	Clinical and Experimental Ophthalmology	62		0,16%	75,86%
Blackwell	1367-2223	1467-839X	Asian Journal of Social Psychology	61		0,16%	75,98%
Blackwell	0305-9049	1468-0084	Oxford Bulletin of Economics AND Statistics	61	C.I.I.	0,16%	76,11%
Blackwell	0736-8046	1525-1470	Pediatric Dermatology	61	C.I.I.	0,16%	76,24%
Blackwell	0145-8876	1745-4530	Journal of Food Process Engineering	61	C.I.I.	0,16%	76,37%
Blackwell	0021-857X	1477-9552	Journal of Agricultural Economics	61		0,16%	76,50%
Blackwell	0021-9916	1460-2466	Journal of Communication	61		0,16%	76,63%
Blackwell	1444-0903	1445-5994	Internal Medicine Journal	60		0,16%	76,75%
Blackwell	1464-6722	1364-3703	Molecular Plant Pathology	60		0,16%	76,88%
Blackwell	0956-540X	1365-246X	Geophysical Journal International	60		0,16%	77,01%
Blackwell	1462-8902	1463-1326	Diabetes, Obesity and Metabolism	58		0,15%	77,13%
Blackwell	1742-7835	1742-7843	Basic AND Clinical Pharmacology AND Toxicology	58		0,15%	77,25%
Blackwell	0012-1592	1440-169X	Development, Growth and Differentiation	58		0,15%	77,37%
Blackwell	0304-4130	1475-6765	European Journal of Political Research	58	C.I.I.	0,15%	77,50%
Blackwell	0014-2972	1365-2362	European Journal of Clinical Investigation	57		0,15%	77,62%
Blackwell	0893-8849	1749-7345	Journal of the World Aquaculture Society	56		0,15%	77,73%
Blackwell	1364-727X	1471-0307	International Journal of Dairy Technology	56		0,15%	77,85%
Blackwell	0962-1075	1365-2583	Insect Molecular Biology	56		0,15%	77,97%
Blackwell	0963-7214	1467-8721	Current Directions in Psychological Science	55		0,14%	78,09%
Blackwell	0969-5893	1468-2850	Clinical Psychology: Science and Practice	55		0,14%	78,20%
Blackwell	1462-5814	1462-5822	Cellular Microbiology	55		0,14%	78,32%
Blackwell	1478-3223	1478-3231	Liver International	55		0,14%	78,43%
Blackwell	1671-4083	1745-7254	Acta Pharmacologica Sinica	55		0,14%	78,55%
Blackwell	0022-3506	1467-6494	Journal of Personality	54	C.I.I.	0,14%	78,66%
Blackwell	0065-101X	1600-0390	Acta Archaeologica	54		0,14%	78,78%



CONSORCIO DE BIBLIOTECAS UNIVERSITARIAS DE GALICIA

Blackwell	0272-4332	1539-6924	Risk Analysis	53	C.I.I.	0,14%	78,89%
Blackwell	1045-3873	1540-8167	Journal of Cardiovascular Electrophysiology,The	53		0,14%	79,00%
Blackwell	1076-0512	1524-4725	Dermatologic Surgery	53		0,14%	79,11%
Blackwell	1050-8392	1532-7795	Journal of Research on Adolescence	52		0,14%	79,22%
Blackwell	0962-1105	1365-2869	Journal of Sleep Research	52		0,14%	79,33%
Blackwell	0931-1785	1439-0434	Journal of Phytopathology	52		0,14%	79,44%
Blackwell	0108-7681	1600-5740	Acta Crystallographica Section B	52		0,14%	79,55%
Blackwell	0031-868X	1477-9730	Photogrammetric Record,The	52		0,14%	79,66%
Blackwell	0034-6586	1475-4991	Review of Income and Wealth	51	C.I.I.	0,13%	79,77%
Blackwell	1046-0756	1745-4573	Journal of Muscle Foods	51		0,13%	79,88%
Blackwell	1444-6162	1445-6664	Weed Biology and Management	51		0,13%	79,98%
Blackwell	0277-0180	1468-0076	OPEC Review	50		0,13%	80,09%

de 227 títulos 82 son da C.I.I. (63,88%-36,12%) Con respecto ao 2006 aparece/n 72 títulos e desaparece/n 41. Hai un incremento de 31 título/s.
--

Cambridge

editor	issn1	issn2	titulo	total	na C.I.I.	%	% acum
Cambridge	0025-3154	1469-7769	Journal of the Marine Biological Association of the United Kingdom	578	C.I.I.	13,56%	10,87%
Cambridge	0954-5794	1469-2198	Development and Psychopathology	294	C.I.I.	6,90%	16,40%
Cambridge	0031-1820	1469-8161	Parasitology	254	C.I.I.	5,96%	21,17%
Cambridge	0033-2917	1469-8978	Psychological Medicine	206		4,83%	25,05%
Cambridge	0954-1020	1365-2079	Antarctic Science	136		3,19%	27,60%
Cambridge	1355-6177	1469-7661	Journal of the International Neuropsychological Society	127		2,98%	29,99%
Cambridge	0140-525X	1469-1825	Behavioral and Brain Sciences	125	C.I.I.	2,93%	32,34%
Cambridge	0022-1120	1469-7645	Journal of Fluid Mechanics	121	C.I.I.	2,84%	34,62%
Cambridge	0007-1145	1475-2662	British Journal of Nutrition	118	C.I.I.	2,77%	36,84%
Cambridge	0956-7968	1469-7653	Journal of Functional Programming	108	C.I.I.	2,53%	38,87%
Cambridge	1041-6102	1741-203X	International Psychogeriatrics	100		2,35%	40,75%
Cambridge	1431-9276	1435-8115	Microscopy and Microanalysis	99		2,32%	42,61%
Cambridge	0016-6723	1469-5073	Genetical Research	95	C.I.I.	2,23%	44,40%
Cambridge	1352-4658	1469-1833	Behavioural and Cognitive Psychotherapy	82		1,92%	45,94%
Cambridge	1751-7311	1751-732X	animal	76	C.I.I.	1,78%	47,37%
Cambridge	0959-7743	1474-0540	Cambridge Archaeological Journal	76		1,78%	48,80%
Cambridge	1461-1457	1469-5111	International Journal of Neuropsychopharmacology	67		1,57%	50,06%
Cambridge	0024-2829	1096-1135	Lichenologist	63	C.I.I.	1,48%	51,24%
Cambridge	0022-0299	1469-7629	Journal of Dairy Research	62	C.I.I.	1,45%	52,41%
Cambridge	0373-4633	1469-7785	Journal of Navigation	59	C.I.I.	1,38%	53,52%
Cambridge	0950-2688	1469-4409	Epidemiology and Infection	59		1,38%	54,63%
Cambridge	0272-2631	1470-1545	Studies in Second Language Acquisition	58	C.I.I.	1,36%	55,72%
Cambridge	0016-7568	1469-5081	Geological Magazine	56		1,31%	56,77%
Cambridge	0260-2105	1469-9044	Review of International Studies	53	C.I.I.	1,24%	57,77%
Cambridge	0043-9339	1743-4777	World's Poultry Science Journal	51		1,20%	58,73%
Cambridge	0266-4674	1469-7831	Journal of Tropical Ecology	44		1,03%	59,55%
Cambridge	1380-2038	1478-2294	Archaeological Dialogues	39		0,92%	60,29%
Cambridge	1368-9800	1475-2727	Public Health Nutrition	38		0,89%	61,00%
Cambridge	0960-2585	1475-2735	Seed Science Research	37		0,87%	61,70%
Cambridge	1743-923X	1743-9248	Politics AND Gender	35		0,82%	62,35%
Cambridge	0267-1905	1471-6356	Annual Review of Applied Linguistics	35	C.I.I.	0,82%	63,01%
Cambridge	0263-0346	1469-803X	Laser and Particle Beams	35		0,82%	63,67%
Cambridge	0017-3835	1477-4550	Greece AND Rome	35		0,82%	64,33%
Cambridge	0022-149X	1475-2697	Journal of Helminthology	34	C.I.I.	0,80%	64,97%
Cambridge	0376-8929	1469-4387	Environmental Conservation	34		0,80%	65,61%
Cambridge	0021-8596	1469-5146	Journal of Agricultural Science	33	C.I.I.	0,77%	66,23%
Cambridge	0022-2267	1469-7742	Journal of Linguistics	32	C.I.I.	0,75%	66,83%
Cambridge	0029-6651	1475-2719	Proceedings of the Nutrition Society	32	C.I.I.	0,75%	67,43%
Cambridge	1365-1005	1469-8056	Macroeconomic Dynamics	32	C.I.I.	0,75%	68,03%
Cambridge	0305-0009	1469-7602	Journal of Child Language	30	C.I.I.	0,70%	68,60%
Cambridge	0266-4666	1469-4360	Econometric Theory	29	C.I.I.	0,68%	69,14%
Cambridge	1479-2443	1479-2451	Modern Intellectual History	29		0,68%	69,69%
Cambridge	0960-7773	1469-2171	Contemporary European History	29		0,68%	70,23%
Cambridge	0047-4045	1469-8013	Language in Society	28	C.I.I.	0,66%	70,76%
Cambridge	0967-1994	1469-8730	Zygote	27		0,63%	71,27%
Cambridge	0956-7933	1474-0656	Rural History	27	C.I.I.	0,63%	71,78%
Cambridge	1537-5927	1541-0986	Perspectives on Politics	26		0,61%	72,26%
Cambridge	0265-0215	1365-2346	European Journal of Anaesthesiology	26		0,61%	72,75%
Cambridge	0008-4239	1744-9324	Canadian Journal of Political Science	26	C.I.I.	0,61%	73,24%
Cambridge	0017-0895	1469-509X	Glasgow Mathematical Journal	25	C.I.I.	0,59%	73,71%
Cambridge	0010-437X	1570-5846	Compositio Mathematica	25	C.I.I.	0,59%	74,18%
Cambridge	1360-6743	1469-4379	English Language and Linguistics	25	C.I.I.	0,59%	74,65%
Cambridge	1047-9511	1467-1107	Cardiology in the Young	25		0,59%	75,12%
Cambridge	0960-4286	1474-0036	Edinburgh Journal of Botany	24		0,56%	75,57%
Cambridge	1366-7289	1469-1841	Bilingualism: Language and Cognition	24		0,56%	76,02%
Cambridge	0263-5747	1469-8668	Robotica	24	C.I.I.	0,56%	76,48%
Cambridge	0305-0041	1469-8064	Mathematical Proceedings of the Cambridge Philosophical Society	23	C.I.I.	0,54%	76,91%
Cambridge	0269-8889	1469-8005	Knowledge Engineering Review	22		0,52%	77,32%
Cambridge	0003-0554	1537-5943	American Political Science Review	22	C.I.I.	0,52%	77,74%
Cambridge	0009-8388	1471-6844	Classical Quarterly	22		0,52%	78,15%
Cambridge	0952-6757	1469-8188	Phonology	22	C.I.I.	0,52%	78,56%
Cambridge	1355-770X	1469-4395	Environment and Development Economics	21		0,49%	78,96%
Cambridge	0963-9268	1469-8706	Urban History	21	C.I.I.	0,49%	79,35%
Cambridge	0010-4175	1475-2999	Comparative Studies in Society and History	21	C.I.I.	0,49%	79,75%
Cambridge	0890-0604	1469-1760	AI EDAM	21	C.I.I.	0,49%	80,14%

de 65 titulos 35 son da C.I.I. (46,15%-53,85%)

Oxford

editor	issn1	issn2	titulo	total	na C.I.I.	%	% acum
Oxford	0737-4038	1537-1719	Molecular Biology and Evolution	1.076	C.I.I.	7,69%	6,19%
Oxford	1462-0324	1462-0332	Rheumatology	861		6,15%	11,14%
Oxford	1367-4803	1460-2059	Bioinformatics	793		5,66%	15,71%
Oxford	0964-6906	1460-2083	Human Molecular Genetics	768	C.I.I.	5,49%	20,12%
Oxford	0006-8950	1460-2156	Brain	562	C.I.I.	4,01%	23,36%
Oxford	0022-0957	1460-2431	Journal of Experimental Botany	556	C.I.I.	3,97%	26,56%
Oxford	1054-3139	0	ICES Journal of Marine Science: Journal du Conseil	540		3,86%	29,66%
Oxford	1047-3211	1460-2199	Cerebral Cortex	531		3,79%	32,72%
Oxford	0305-7364	1095-8290	Annals of Botany	523	C.I.I.	3,74%	35,73%
Oxford	0195-668x	1522-9645	European Heart Journal	478		3,41%	38,48%
Oxford	0305-7453	1460-2091	Journal of Antimicrobial Chemotherapy	427		3,05%	40,93%
Oxford	1096-6080	1096-0929	Toxicological Sciences	410	C.I.I.	2,93%	43,29%
Oxford	0027-8874	1460-2105	Journal of the National Cancer Institute	399		2,85%	45,59%
Oxford	0143-3334	1460-2180	Carcinogenesis	398		2,84%	47,88%
Oxford	0923-7534	1569-8041	Annals of Oncology	377		2,69%	50,05%
Oxford	1473-6691	1742-3422	Journal of the ICRU	375		2,68%	52,20%
Oxford	0002-9262	1476-6256	American Journal of Epidemiology	374	C.I.I.	2,67%	54,36%
Oxford	0931-0509	1460-2385	Nephrology Dialysis Transplantation	339		2,42%	56,31%
Oxford	0142-7873	1464-3774	Journal of Plankton Research	338	C.I.I.	2,41%	58,25%
Oxford	0022-1503	1465-7333	Journal of Heredity	331	C.I.I.	2,36%	60,15%
Oxford	1540-7063	1557-7023	Integrative and Comparative Biology	283		2,02%	61,78%
Oxford	0260-1230	1464-3766	Journal of Molluscan Studies	271	C.I.I.	1,94%	63,34%
Oxford	0007-0912	1471-6771	BJA: British Journal of Anaesthesia	256		1,83%	64,81%
Oxford	0735-0414	1464-3502	Alcohol and Alcoholism	251		1,79%	66,26%
Oxford	0268-1161	1460-2350	Human Reproduction	235	C.I.I.	1,68%	67,61%
Oxford	0032-0781	1471-9053	Plant and Cell Physiology	219	C.I.I.	1,56%	68,87%
Oxford	0002-0729	1468-2834	Age and Ageing	216		1,54%	70,11%
Oxford	0959-6658	1460-2423	Glycobiology	204		1,46%	71,29%
Oxford	0144-8420	1742-3406	Radiation Protection Dosimetry	163		1,16%	72,22%
Oxford	0300-5771	1464-3685	International Journal of Epidemiology	157	C.I.I.	1,12%	73,13%
Oxford	0263-2136	1460-2229	Family Practice	143		1,02%	73,95%
Oxford	0586-7614	1745-1701	Schizophrenia Bulletin	142	C.I.I.	1,01%	74,77%
Oxford	0021-924X		Journal of Biochemistry	141		1,01%	75,58%
Oxford	0015-752X	1464-3626	Forestry	140	C.I.I.	1,00%	76,38%
Oxford	1045-2249	1465-7279	Behavioral Ecology	128		0,91%	77,12%
Oxford	1472-2615	1477-4518	Continuing Education in Anaesthesia, Critical Care AND Pain	128		0,91%	77,86%
Oxford	0267-8357	1464-3804	Mutagenesis	126		0,90%	78,58%
Oxford	1460-2725	1460-2393	QJM: An International Journal of Medicine	121		0,86%	79,28%
Oxford	0379-864X	1464-3553	Chemical Senses	111		0,79%	79,92%
Oxford	1741-0126	1741-0134	Protein Engineering, Design and Selection	109		0,78%	80,54%

de 40 titulos 15 son da C.I.I. (62,5%-37,5%)

ScienceDirect

editor	issn1	titulo	total	na C.I.I.	%	% acum
ScienceDirect	0021-9673	Journal of Chromatography A	7.572	C.I.I.	2,87%	2,29%
ScienceDirect	0040-4039	Tetrahedron Letters	6.903	C.I.I.	2,61%	4,38%
ScienceDirect	0040-4020	Tetrahedron	5.445	C.I.I.	2,06%	6,03%
ScienceDirect	0003-2670	Analytica Chimica Acta	4.203	C.I.I.	1,59%	7,31%
ScienceDirect	0045-6535	Chemosphere	4.178	C.I.I.	1,58%	8,57%
ScienceDirect	0960-8524	Bioresource Technology	3.542	C.I.I.	1,34%	9,65%
ScienceDirect	0960-894X	Bioorganic AND Medicinal Chemistry Letters	3.089	C.I.I.	1,17%	10,58%
ScienceDirect	0048-9697	Science of The Total Environment	2.987	C.I.I.	1,13%	11,49%
ScienceDirect	0308-8146	Food Chemistry	2.919	C.I.I.	1,10%	12,37%
ScienceDirect	0043-1354	Water Research	2.827	C.I.I.	1,07%	13,23%
ScienceDirect	0044-8486	Aquaculture	2.807	C.I.I.	1,06%	14,08%
ScienceDirect	0021-9797	Journal of Colloid and Interface Science	2.578	C.I.I.	0,98%	14,86%
ScienceDirect	0379-0738	Forensic Science International	2.576	C.I.I.	0,98%	15,64%
ScienceDirect	0378-3812	Fluid Phase Equilibria	2.357	C.I.I.	0,89%	16,35%
ScienceDirect	0022-328X	Journal of Organometallic Chemistry	2.356	C.I.I.	0,89%	17,07%
ScienceDirect	0025-326X	Marine Pollution Bulletin	2.347	C.I.I.	0,89%	17,78%
ScienceDirect	0039-9140	Talanta	2.306	C.I.I.	0,87%	18,47%
ScienceDirect	0968-0896	Bioorganic AND Medicinal Chemistry	2.281		0,86%	19,17%
ScienceDirect	0277-5387	Polyhedron	2.262	C.I.I.	0,86%	19,85%
ScienceDirect	0142-9612	Biomaterials	2.184	C.I.I.	0,83%	20,51%
ScienceDirect	0269-7491	Environmental Pollution	2.138	C.I.I.	0,81%	21,16%
ScienceDirect	0378-5173	International Journal of Pharmaceutics	2.135	C.I.I.	0,81%	21,81%
ScienceDirect	0006-8993	Brain Research	1.955	C.I.I.	0,74%	22,40%
ScienceDirect	0304-3894	Journal of Hazardous Materials	1.905		0,72%	22,98%
ScienceDirect	0140-6736	The Lancet	1.884	C.I.I.	0,71%	23,55%
ScienceDirect	0168-3659	Journal of Controlled Release	1.759	C.I.I.	0,67%	24,08%
ScienceDirect	0378-1127	Forest Ecology and Management	1.655	C.I.I.	0,63%	24,58%
ScienceDirect	0260-8774	Journal of Food Engineering	1.653	C.I.I.	0,63%	25,08%
ScienceDirect	0006-291X	Biochemical and Biophysical Research Communications	1.637	C.I.I.	0,62%	25,58%
ScienceDirect	0038-0717	Soil Biology and Biochemistry	1.608	C.I.I.	0,61%	26,06%
ScienceDirect	0927-7757	Colloids and Surfaces A: Physicochemical and Engineering Aspects	1.526		0,58%	26,53%
ScienceDirect	0020-1693	Inorganica Chimica Acta	1.475	C.I.I.	0,56%	26,97%
ScienceDirect	0009-2614	Chemical Physics Letters	1.417	C.I.I.	0,54%	27,40%
ScienceDirect	0016-7061	Geoderma	1.412	C.I.I.	0,53%	27,83%
ScienceDirect	0957-4166	Tetrahedron: Asymmetry	1.382	C.I.I.	0,52%	28,25%
ScienceDirect	0021-9614	The Journal of Chemical Thermodynamics	1.381	C.I.I.	0,52%	28,67%
ScienceDirect	1352-2310	Atmospheric Environment	1.335	C.I.I.	0,51%	29,07%
ScienceDirect	0272-7714	Estuarine, Coastal and Shelf Science	1.319	C.I.I.	0,50%	29,47%
ScienceDirect	0041-0101	Toxicol	1.280		0,48%	29,86%
ScienceDirect	0022-0981	Journal of Experimental Marine Biology and Ecology	1.249	C.I.I.	0,47%	30,24%
ScienceDirect	0304-8853	Journal of Magnetism and Magnetic Materials	1.232	C.I.I.	0,47%	30,61%
ScienceDirect	0378-7753	Journal of Power Sources	1.230		0,47%	30,98%
ScienceDirect	0168-1605	International Journal of Food Microbiology	1.225	C.I.I.	0,46%	31,35%
ScienceDirect	0304-3940	Neuroscience Letters	1.214	C.I.I.	0,46%	31,72%
ScienceDirect	0169-4332	Applied Surface Science	1.213		0,46%	32,09%
ScienceDirect	0257-8972	Surface and Coatings Technology	1.211		0,46%	32,46%
ScienceDirect	0306-4522	Neuroscience	1.194	C.I.I.	0,45%	32,82%
ScienceDirect	0032-3861	Polymer	1.184		0,45%	33,18%
ScienceDirect	0169-5347	Trends in Ecology AND Evolution	1.166	C.I.I.	0,44%	33,53%
ScienceDirect	1570-0232	Journal of Chromatography B	1.086	C.I.I.	0,41%	33,86%
ScienceDirect	0169-409X	Advanced Drug Delivery Reviews	1.073		0,41%	34,18%
ScienceDirect	0924-0136	Journal of Materials Processing Technology	1.067	C.I.I.	0,40%	34,51%
ScienceDirect	1055-7903	Molecular Phylogenetics and Evolution	1.049	C.I.I.	0,40%	34,82%
ScienceDirect	1359-5113	Process Biochemistry	1.040	C.I.I.	0,39%	35,14%
ScienceDirect	0006-3207	Biological Conservation	1.032		0,39%	35,45%
ScienceDirect	0025-3227	Marine Geology	1.022	C.I.I.	0,39%	35,76%
ScienceDirect	0921-8009	Ecological Economics	997	C.I.I.	0,38%	36,06%
ScienceDirect	0166-445X	Aquatic Toxicology	963		0,36%	36,36%
ScienceDirect	0014-5793	FEBS Letters	958	C.I.I.	0,36%	36,65%
ScienceDirect	0165-9936	TrAC Trends in Analytical Chemistry	907	C.I.I.	0,34%	36,92%
ScienceDirect	1050-4648	Fish AND Shellfish Immunology	905	C.I.I.	0,34%	37,19%
ScienceDirect	0304-4017	Veterinary Parasitology	900	C.I.I.	0,34%	37,47%
ScienceDirect	0016-7037	Geochimica et Cosmochimica Acta	891	C.I.I.	0,34%	37,74%
ScienceDirect	0038-092X	Solar Energy	888	C.I.I.	0,34%	38,01%
ScienceDirect	0309-1740	Meat Science	886	C.I.I.	0,34%	38,27%
ScienceDirect	0377-0427	Journal of Computational and Applied Mathematics	865	C.I.I.	0,33%	38,54%
ScienceDirect	0141-0229	Enzyme and Microbial Technology	859	C.I.I.	0,33%	38,80%
ScienceDirect	0160-4120	Environment International	842		0,32%	39,05%
ScienceDirect	0584-8547	Spectrochimica Acta Part B: Atomic Spectroscopy	842	C.I.I.	0,32%	39,31%

CONSORCIO DE BIBLIOTECAS UNIVERSITARIAS DE GALICIA

ScienceDirect	0939-6411	European Journal of Pharmaceutics and Biopharmaceutics	833	C.I.I.	0,32%	39,56%
ScienceDirect	0016-6480	General and Comparative Endocrinology	827	C.I.I.	0,31%	39,81%
ScienceDirect	0921-5093	Materials Science and Engineering: A	815		0,31%	40,06%
ScienceDirect	0168-9002	Nuclear Instruments and Methods in Physics Research Section A: Accelerators, Spectrometers, Detectors and Associated Equipment	803	C.I.I.	0,30%	40,30%
ScienceDirect	0168-1656	Journal of Biotechnology	799		0,30%	40,54%
ScienceDirect	0162-0134	Journal of Inorganic Biochemistry	791	C.I.I.	0,30%	40,78%
ScienceDirect	0960-1481	Renewable Energy	789	C.I.I.	0,30%	41,02%
ScienceDirect	0022-2836	Journal of Molecular Biology	786		0,30%	41,26%
ScienceDirect	0009-2509	Chemical Engineering Science	785	C.I.I.	0,30%	41,50%
ScienceDirect	0167-8809	Agriculture, Ecosystems AND Environment	766	C.I.I.	0,29%	41,73%
ScienceDirect	0141-1136	Marine Environmental Research	764	C.I.I.	0,29%	41,96%
ScienceDirect	0013-4686	Electrochimica Acta	763	C.I.I.	0,29%	42,19%
ScienceDirect	0017-9310	International Journal of Heat and Mass Transfer	749	C.I.I.	0,28%	42,42%
ScienceDirect	0006-3223	Biological Psychiatry	749	C.I.I.	0,28%	42,64%
ScienceDirect	0731-7085	Journal of Pharmaceutical and Biomedical Analysis	748	C.I.I.	0,28%	42,87%
ScienceDirect	0961-9534	Biomass and Bioenergy	738		0,28%	43,09%
ScienceDirect	0264-410X	Vaccine	733		0,28%	43,32%
ScienceDirect	0165-7836	Fisheries Research	723	C.I.I.	0,27%	43,54%
ScienceDirect	0304-3800	Ecological Modelling	718		0,27%	43,75%
ScienceDirect	0014-2999	European Journal of Pharmacology	712	C.I.I.	0,27%	43,97%
ScienceDirect	0040-6090	Thin Solid Films	701	C.I.I.	0,27%	44,18%
ScienceDirect	0361-9230	Brain Research Bulletin	695	C.I.I.	0,26%	44,39%
ScienceDirect	0022-1694	Journal of Hydrology	691		0,26%	44,60%
ScienceDirect	0008-6215	Carbohydrate Research	684		0,26%	44,81%
ScienceDirect	1387-7003	Inorganic Chemistry Communications	683	C.I.I.	0,26%	45,01%
ScienceDirect	0378-1119	Gene	680	C.I.I.	0,26%	45,22%
ScienceDirect	0896-8446	The Journal of Supercritical Fluids	670		0,25%	45,42%
ScienceDirect	0093-691X	Theriogenology	648	C.I.I.	0,25%	45,62%
ScienceDirect	1053-8119	NeuroImage	640		0,24%	45,81%
ScienceDirect	0895-7061	American Journal of Hypertension	632		0,24%	46,01%
ScienceDirect	0958-6946	International Dairy Journal	631		0,24%	46,20%
ScienceDirect	0016-2361	Fuel	630		0,24%	46,39%
ScienceDirect	0022-3093	Journal of Non-Crystalline Solids	628	C.I.I.	0,24%	46,58%
ScienceDirect	0023-6438	LWT - Food Science and Technology	627		0,24%	46,77%
ScienceDirect	0003-2697	Analytical Biochemistry	626	C.I.I.	0,24%	46,96%
ScienceDirect	0223-5234	European Journal of Medicinal Chemistry	625	C.I.I.	0,24%	47,15%
ScienceDirect	0096-3003	Applied Mathematics and Computation	613	C.I.I.	0,23%	47,33%
ScienceDirect	0006-2952	Biochemical Pharmacology	611	C.I.I.	0,23%	47,52%
ScienceDirect	0883-2927	Applied Geochemistry	608		0,23%	47,70%
ScienceDirect	0735-1097	Journal of the American College of Cardiology	606		0,23%	47,88%
ScienceDirect	0161-6420	Ophthalmology	604	C.I.I.	0,23%	48,07%
ScienceDirect	0960-0760	The Journal of Steroid Biochemistry and Molecular Biology	603		0,23%	48,25%
ScienceDirect	0277-3791	Quaternary Science Reviews	599		0,23%	48,43%
ScienceDirect	0010-938X	Corrosion Science	596	C.I.I.	0,23%	48,61%
ScienceDirect	0278-2391	Journal of Oral and Maxillofacial Surgery	595		0,23%	48,79%
ScienceDirect	0022-247X	Journal of Mathematical Analysis and Applications	594	C.I.I.	0,22%	48,97%
ScienceDirect	0040-6031	Thermochimica Acta	589	C.I.I.	0,22%	49,15%
ScienceDirect	1369-703X	Biochemical Engineering Journal	586	C.I.I.	0,22%	49,33%
ScienceDirect	0009-8981	Clinica Chimica Acta	583		0,22%	49,51%
ScienceDirect	0031-0182	Palaeogeography, Palaeoclimatology, Palaeoecology	580	C.I.I.	0,22%	49,68%
ScienceDirect	0043-1648	Wear	578		0,22%	49,86%
ScienceDirect	0166-1280	Journal of Molecular Structure: THEOCHEM	578	C.I.I.	0,22%	50,03%
ScienceDirect	0167-9473	Computational Statistics AND Data Analysis	572	C.I.I.	0,22%	50,20%
ScienceDirect	0010-8545	Coordination Chemistry Reviews	570	C.I.I.	0,22%	50,38%
ScienceDirect	0956-7135	Food Control	569	C.I.I.	0,22%	50,55%
ScienceDirect	0924-7963	Journal of Marine Systems	567		0,21%	50,72%
ScienceDirect	0196-9781	Peptides	564		0,21%	50,89%
ScienceDirect	0144-8617	Carbohydrate Polymers	559		0,21%	51,06%
ScienceDirect	0147-6513	Ecotoxicology and Environmental Safety	552		0,21%	51,23%
ScienceDirect	0012-1606	Developmental Biology	550		0,21%	51,40%
ScienceDirect	0022-2860	Journal of Molecular Structure	549	C.I.I.	0,21%	51,56%
ScienceDirect	0377-2217	European Journal of Operational Research	537	C.I.I.	0,20%	51,72%
ScienceDirect	0031-9384	Physiology AND Behavior	532		0,20%	51,89%
ScienceDirect	0002-9394	American Journal of Ophthalmology	528	C.I.I.	0,20%	52,05%
ScienceDirect	0378-1135	Veterinary Microbiology	522	C.I.I.	0,20%	52,20%
ScienceDirect	0167-577X	Materials Letters	521		0,20%	52,36%
ScienceDirect	0024-3205	Life Sciences	519	C.I.I.	0,20%	52,52%
ScienceDirect	1381-1169	Journal of Molecular Catalysis A: Chemical	516		0,20%	52,67%
ScienceDirect	1095-6433	Comparative Biochemistry and Physiology Part A: Molecular AND Integrative Physiology	515	C.I.I.	0,19%	52,83%
ScienceDirect	0920-9964	Schizophrenia Research	512		0,19%	52,99%
ScienceDirect	0362-546X	Nonlinear Analysis	508	C.I.I.	0,19%	53,14%
ScienceDirect	1079-2104	Oral Surgery, Oral Medicine, Oral Pathology, Oral Radiology, and Endodontology	507		0,19%	53,29%

CONSORCIO DE BIBLIOTECAS UNIVERSITARIAS DE GALICIA

ScienceDirect	0012-821X	Earth and Planetary Science Letters	506		0,19%	53,45%
ScienceDirect	0929-1393	Applied Soil Ecology	503		0,19%	53,60%
ScienceDirect	0030-4018	Optics Communications	498	C.I.I.	0,19%	53,75%
ScienceDirect	0045-7825	Computer Methods in Applied Mechanics and Engineering	491	C.I.I.	0,19%	53,90%
ScienceDirect	0301-0104	Chemical Physics	490	C.I.I.	0,19%	54,05%
ScienceDirect	0300-483X	Toxicology	486		0,18%	54,19%
ScienceDirect	1385-8947	Chemical Engineering Journal	486	C.I.I.	0,18%	54,34%
ScienceDirect	0140-7007	International Journal of Refrigeration	483	C.I.I.	0,18%	54,49%
ScienceDirect	0167-7012	Journal of Microbiological Methods	482	C.I.I.	0,18%	54,63%
ScienceDirect	0928-0987	European Journal of Pharmaceutical Sciences	482	C.I.I.	0,18%	54,78%
ScienceDirect	0167-7799	Trends in Biotechnology	480	C.I.I.	0,18%	54,92%
ScienceDirect	0091-6749	Journal of Allergy and Clinical Immunology	480		0,18%	55,07%
ScienceDirect	0376-7388	Journal of Membrane Science	479		0,18%	55,22%
ScienceDirect	1359-6446	Drug Discovery Today	478		0,18%	55,36%
ScienceDirect	1096-4959	Comparative Biochemistry and Physiology Part B: Biochemistry and Molecular Biology	473	C.I.I.	0,18%	55,50%
ScienceDirect	0378-4371	Physica A: Statistical Mechanics and its Applications	472	C.I.I.	0,18%	55,65%
ScienceDirect	0360-3199	International Journal of Hydrogen Energy	469		0,18%	55,79%
ScienceDirect	0169-555X	Geomorphology	469		0,18%	55,93%
ScienceDirect	1359-4311	Applied Thermal Engineering	465		0,18%	56,07%
ScienceDirect	0031-9422	Phytochemistry	463		0,18%	56,21%
ScienceDirect	0278-4343	Continental Shelf Research	460	C.I.I.	0,17%	56,35%
ScienceDirect	0166-2236	Trends in Neurosciences	454	C.I.I.	0,17%	56,49%
ScienceDirect	0378-4320	Animal Reproduction Science	451		0,17%	56,63%
ScienceDirect	0146-6380	Organic Geochemistry	449		0,17%	56,76%
ScienceDirect	0167-8140	Radiotherapy and Oncology	445		0,17%	56,90%
ScienceDirect	0927-7765	Colloids and Surfaces B: Biointerfaces	445		0,17%	57,03%
ScienceDirect	0963-9969	Food Research International	440		0,17%	57,16%
ScienceDirect	0196-8904	Energy Conversion and Management	438		0,17%	57,30%
ScienceDirect	0305-4403	Journal of Archaeological Science	436	C.I.I.	0,17%	57,43%
ScienceDirect	1383-5866	Separation and Purification Technology	434	C.I.I.	0,16%	57,56%
ScienceDirect	0268-005X	Food Hydrocolloids	433		0,16%	57,69%
ScienceDirect	0301-4797	Journal of Environmental Management	425	C.I.I.	0,16%	57,82%
ScienceDirect	0008-8846	Cement and Concrete Research	424	C.I.I.	0,16%	57,95%
ScienceDirect	0341-8162	CATENA	414	C.I.I.	0,16%	58,07%
ScienceDirect	0926-6690	Industrial Crops and Products	414		0,16%	58,20%
ScienceDirect	0378-4274	Toxicology Letters	411	C.I.I.	0,16%	58,32%
ScienceDirect	0016-5085	Gastroenterology	409	C.I.I.	0,15%	58,45%
ScienceDirect	0168-9525	Trends in Genetics	408	C.I.I.	0,15%	58,57%
ScienceDirect	0955-2219	Journal of the European Ceramic Society	408		0,15%	58,69%
ScienceDirect	0014-3057	European Polymer Journal	406		0,15%	58,82%
ScienceDirect	0957-4174	Expert Systems with Applications	405	C.I.I.	0,15%	58,94%
ScienceDirect	0740-0020	Food Microbiology	404	C.I.I.	0,15%	59,06%
ScienceDirect	0011-9164	Desalination	404		0,15%	59,19%
ScienceDirect	0960-0779	Chaos, Solitons AND Fractals	401		0,15%	59,31%
ScienceDirect	0956-053X	Waste Management	400		0,15%	59,43%
ScienceDirect	0169-5002	Lung Cancer	399		0,15%	59,55%
ScienceDirect	0967-0645	Deep Sea Research Part II: Topical Studies in Oceanography	397		0,15%	59,67%
ScienceDirect	0955-0674	Current Opinion in Cell Biology	395	C.I.I.	0,15%	59,79%
ScienceDirect	0165-0173	Brain Research Reviews	394	C.I.I.	0,15%	59,91%
ScienceDirect	0008-6363	Cardiovascular Research	393		0,15%	60,03%
ScienceDirect	0003-9861	Archives of Biochemistry and Biophysics	391	C.I.I.	0,15%	60,15%
ScienceDirect	0303-7207	Molecular and Cellular Endocrinology	390	C.I.I.	0,15%	60,26%
ScienceDirect	0889-1575	Journal of Food Composition and Analysis	389		0,15%	60,38%
ScienceDirect	1532-0456	Comparative Biochemistry and Physiology Part C: Toxicology AND Pharmacology	389	C.I.I.	0,15%	60,50%
ScienceDirect	1090-7807	Journal of Magnetic Resonance	388		0,15%	60,62%
ScienceDirect	0002-9343	The American Journal of Medicine	387	C.I.I.	0,15%	60,73%
ScienceDirect	0143-8166	Optics and Lasers in Engineering	386	C.I.I.	0,15%	60,85%
ScienceDirect	0301-4215	Energy Policy	384	C.I.I.	0,15%	60,97%
ScienceDirect	0921-4526	Physica B: Condensed Matter	382	C.I.I.	0,14%	61,08%
ScienceDirect	0360-5442	Energy	378		0,14%	61,20%
ScienceDirect	0191-8869	Personality and Individual Differences	376		0,14%	61,31%
ScienceDirect	1568-9883	Harmful Algae	375		0,14%	61,42%
ScienceDirect	1388-2457	Clinical Neurophysiology	374	C.I.I.	0,14%	61,54%
ScienceDirect	0920-5861	Catalysis Today	373		0,14%	61,65%
ScienceDirect	0161-5890	Molecular Immunology	371		0,14%	61,76%
ScienceDirect	0028-3908	Neuropharmacology	371	C.I.I.	0,14%	61,88%
ScienceDirect	0028-3932	Neuropsychologia	369	C.I.I.	0,14%	61,99%
ScienceDirect	0891-5849	Free Radical Biology and Medicine	369		0,14%	62,10%
ScienceDirect	0165-6147	Trends in Pharmacological Sciences	368		0,14%	62,21%
ScienceDirect	0009-2541	Chemical Geology	367		0,14%	62,32%
ScienceDirect	0197-0186	Neurochemistry International	362	C.I.I.	0,14%	62,43%
ScienceDirect	0278-6915	Food and Chemical Toxicology	359	C.I.I.	0,14%	62,54%
ScienceDirect	0962-8924	Trends in Cell Biology	358	C.I.I.	0,14%	62,65%

CONSORCIO DE BIBLIOTECAS UNIVERSITARIAS DE GALICIA

ScienceDirect	0304-4203	Marine Chemistry	357	C.I.I.	0,14%	62,76%
ScienceDirect	0022-3476	The Journal of Pediatrics	357	C.I.I.	0,14%	62,87%
ScienceDirect	0005-2736	Biochimica et Biophysica Acta (BBA) - Biomembranes	351	C.I.I.	0,13%	62,97%
ScienceDirect	0958-1669	Current Opinion in Biotechnology	349		0,13%	63,08%
ScienceDirect	1090-0233	The Veterinary Journal	349	C.I.I.	0,13%	63,18%
ScienceDirect	0921-4534	Physica C: Superconductivity	348	C.I.I.	0,13%	63,29%
ScienceDirect	0190-9622	Journal of the American Academy of Dermatology	348	C.I.I.	0,13%	63,39%
ScienceDirect	0014-4827	Experimental Cell Research	346		0,13%	63,50%
ScienceDirect	0041-624X	Ultrasonics	346		0,13%	63,60%
ScienceDirect	0014-4886	Experimental Neurology	344	C.I.I.	0,13%	63,71%
ScienceDirect	0300-9440	Progress in Organic Coatings	343	C.I.I.	0,13%	63,81%
ScienceDirect	0926-860X	Applied Catalysis A: General	340		0,13%	63,91%
ScienceDirect	1357-2725	The International Journal of Biochemistry AND Cell Biology	339	C.I.I.	0,13%	64,02%
ScienceDirect	0375-9474	Nuclear Physics A	339	C.I.I.	0,13%	64,12%
ScienceDirect	0167-0115	Regulatory Peptides	337		0,13%	64,22%
ScienceDirect	0165-1765	Economics Letters	336	C.I.I.	0,13%	64,32%
ScienceDirect	0027-5107	Mutation Research/Fundamental and Molecular Mechanisms of Mutagenesis	334		0,13%	64,42%
ScienceDirect	0021-9991	Journal of Computational Physics	332	C.I.I.	0,13%	64,53%
ScienceDirect	0009-9120	Clinical Biochemistry	332		0,13%	64,63%
ScienceDirect	0042-6989	Vision Research	331		0,13%	64,73%
ScienceDirect	0261-5177	Tourism Management	331		0,13%	64,83%
ScienceDirect	1146-609X	Acta Oecologica	331	C.I.I.	0,13%	64,93%
ScienceDirect	0375-9601	Physics Letters A	330	C.I.I.	0,12%	65,03%
ScienceDirect	0020-7519	International Journal for Parasitology	330	C.I.I.	0,12%	65,13%
ScienceDirect	1360-1385	Trends in Plant Science	327	C.I.I.	0,12%	65,23%
ScienceDirect	0013-9351	Environmental Research	326		0,12%	65,32%
ScienceDirect	1164-5563	European Journal of Soil Biology	325	C.I.I.	0,12%	65,42%
ScienceDirect	0928-4931	Materials Science and Engineering: C	324		0,12%	65,52%
ScienceDirect	0167-5877	Preventive Veterinary Medicine	324		0,12%	65,62%
ScienceDirect	0968-0004	Trends in Biochemical Sciences	323	C.I.I.	0,12%	65,72%
ScienceDirect	0167-7322	Journal of Molecular Liquids	322		0,12%	65,81%
ScienceDirect	0197-4580	Neurobiology of Aging	322		0,12%	65,91%
ScienceDirect	0360-1323	Building and Environment	322	C.I.I.	0,12%	66,01%
ScienceDirect	0304-3835	Cancer Letters	322		0,12%	66,11%
ScienceDirect	0306-4603	Addictive Behaviors	320		0,12%	66,20%
ScienceDirect	0079-6611	Progress in Oceanography	318		0,12%	66,30%
ScienceDirect	0959-4388	Current Opinion in Neurobiology	315	C.I.I.	0,12%	66,40%
ScienceDirect	0898-6568	Cellular Signalling	315		0,12%	66,49%
ScienceDirect	0370-2693	Physics Letters B	313	C.I.I.	0,12%	66,59%
ScienceDirect	0167-7152	Statistics AND Probability Letters	313	C.I.I.	0,12%	66,68%
ScienceDirect	0022-4596	Journal of Solid State Chemistry	311		0,12%	66,78%
ScienceDirect	0959-6526	Journal of Cleaner Production	308		0,12%	66,87%
ScienceDirect	1010-6030	Journal of Photochemistry and Photobiology A: Chemistry	308		0,12%	66,96%
ScienceDirect	0959-8049	European Journal of Cancer	307		0,12%	67,05%
ScienceDirect	0254-0584	Materials Chemistry and Physics	306		0,12%	67,15%
ScienceDirect	0964-8305	International Biodeterioration AND Biodegradation	303	C.I.I.	0,11%	67,24%
ScienceDirect	1043-2760	Trends in Endocrinology AND Metabolism	302		0,11%	67,33%
ScienceDirect	1364-0321	Renewable and Sustainable Energy Reviews	302		0,11%	67,42%
ScienceDirect	1386-1425	Spectrochimica Acta Part A: Molecular and Biomolecular Spectroscopy	302	C.I.I.	0,11%	67,51%
ScienceDirect	0956-5663	Biosensors and Bioelectronics	301		0,11%	67,60%
ScienceDirect	0022-510X	Journal of the Neurological Sciences	301		0,11%	67,70%
ScienceDirect	0039-128X	Steroids	300	C.I.I.	0,11%	67,79%
ScienceDirect	0030-3992	Optics AND Laser Technology	299	C.I.I.	0,11%	67,88%
ScienceDirect	1369-5266	Current Opinion in Plant Biology	298		0,11%	67,97%
ScienceDirect	0925-4005	Sensors and Actuators B: Chemical	295		0,11%	68,06%
ScienceDirect	0921-8181	Global and Planetary Change	295		0,11%	68,15%
ScienceDirect	1470-2045	The Lancet Oncology	294		0,11%	68,24%
ScienceDirect	8756-3282	Bone	292		0,11%	68,32%
ScienceDirect	0169-1317	Applied Clay Science	292	C.I.I.	0,11%	68,41%
ScienceDirect	0924-2244	Trends in Food Science AND Technology	290		0,11%	68,50%
ScienceDirect	1344-6223	Legal Medicine	290		0,11%	68,59%
ScienceDirect	0169-7722	Journal of Contaminant Hydrology	289		0,11%	68,68%
ScienceDirect	0167-5273	International Journal of Cardiology	289		0,11%	68,76%
ScienceDirect	0026-265X	Microchemical Journal	288	C.I.I.	0,11%	68,85%
ScienceDirect	0079-6700	Progress in Polymer Science	288	C.I.I.	0,11%	68,94%
ScienceDirect	0925-8574	Ecological Engineering	288		0,11%	69,02%
ScienceDirect	0145-305X	Developmental AND Comparative Immunology	287		0,11%	69,11%
ScienceDirect	0168-583X	Nuclear Instruments and Methods in Physics Research Section B: Beam Interactions with Materials and Atoms	286	C.I.I.	0,11%	69,20%
ScienceDirect	0169-7439	Chemometrics and Intelligent Laboratory Systems	285	C.I.I.	0,11%	69,28%
ScienceDirect	0168-9452	Plant Science	285	C.I.I.	0,11%	69,37%
ScienceDirect	1383-5718	Mutation Research/Genetic Toxicology and Environmental Mutagenesis	284		0,11%	69,46%
ScienceDirect	0959-440X	Current Opinion in Structural Biology	283		0,11%	69,54%

CONSORCIO DE BIBLIOTECAS UNIVERSITARIAS DE GALICIA

ScienceDirect	0140-3664	Computer Communications	283	C.I.I.	0,11%	69,63%
ScienceDirect	0022-5193	Journal of Theoretical Biology	283		0,11%	69,71%
ScienceDirect	0041-008X	Toxicology and Applied Pharmacology	283	C.I.I.	0,11%	69,80%
ScienceDirect	0047-2484	Journal of Human Evolution	282	C.I.I.	0,11%	69,89%
ScienceDirect	0041-1345	Transplantation Proceedings	281		0,11%	69,97%
ScienceDirect	0005-7967	Behaviour Research and Therapy	280	C.I.I.	0,11%	70,06%
ScienceDirect	1470-160X	Ecological Indicators	280		0,11%	70,14%
ScienceDirect	0891-0618	Journal of Chemical Neuroanatomy	279	C.I.I.	0,11%	70,22%
ScienceDirect	0167-8760	International Journal of Psychophysiology	278	C.I.I.	0,11%	70,31%
ScienceDirect	0165-2427	Veterinary Immunology and Immunopathology	277		0,10%	70,39%
ScienceDirect	0034-4257	Remote Sensing of Environment	277	C.I.I.	0,10%	70,48%
ScienceDirect	0037-0738	Sedimentary Geology	276	C.I.I.	0,10%	70,56%
ScienceDirect	0031-3203	Pattern Recognition	276		0,10%	70,64%
ScienceDirect	0163-7258	Pharmacology AND Therapeutics	276		0,10%	70,73%
ScienceDirect	1046-5928	Protein Expression and Purification	276		0,10%	70,81%
ScienceDirect	1364-6613	Trends in Cognitive Sciences	272		0,10%	70,89%
ScienceDirect	0143-7208	Dyes and Pigments	272		0,10%	70,98%
ScienceDirect	0021-9290	Journal of Biomechanics	272		0,10%	71,06%
ScienceDirect	0038-1098	Solid State Communications	270		0,10%	71,14%
ScienceDirect	0306-9877	Medical Hypotheses	270		0,10%	71,22%
ScienceDirect	1359-6454	Acta Materialia	269	C.I.I.	0,10%	71,30%
ScienceDirect	0022-4049	Journal of Pure and Applied Algebra	268	C.I.I.	0,10%	71,38%
ScienceDirect	0308-597X	Marine Policy	267	C.I.I.	0,10%	71,47%
ScienceDirect	0169-2046	Landscape and Urban Planning	267		0,10%	71,55%
ScienceDirect	0165-3806	Developmental Brain Research	266	C.I.I.	0,10%	71,63%
ScienceDirect	0033-5894	Quaternary Research	266	C.I.I.	0,10%	71,71%
ScienceDirect	0029-8018	Ocean Engineering	265	C.I.I.	0,10%	71,79%
ScienceDirect	0272-7358	Clinical Psychology Review	264		0,10%	71,87%
ScienceDirect	0304-4238	Scientia Horticulturae	263	C.I.I.	0,10%	71,95%
ScienceDirect	1367-5931	Current Opinion in Chemical Biology	263		0,10%	72,03%
ScienceDirect	0165-022X	Journal of Biochemical and Biophysical Methods	262		0,10%	72,11%
ScienceDirect	0377-8398	Marine Micropaleontology	260	C.I.I.	0,10%	72,19%
ScienceDirect	0378-1097	FEMS Microbiology Letters	260	C.I.I.	0,10%	72,26%
ScienceDirect	0378-3758	Journal of Statistical Planning and Inference	260	C.I.I.	0,10%	72,34%
ScienceDirect	0003-9993	Archives of Physical Medicine and Rehabilitation	260	C.I.I.	0,10%	72,42%
ScienceDirect	0141-3910	Polymer Degradation and Stability	259		0,10%	72,50%
ScienceDirect	1364-8152	Environmental Modelling AND Software	259		0,10%	72,58%
ScienceDirect	0090-8258	Gynecologic Oncology	257	C.I.I.	0,10%	72,66%
ScienceDirect	0377-8401	Animal Feed Science and Technology	256		0,10%	72,73%
ScienceDirect	0026-0495	Metabolism	254		0,10%	72,81%
ScienceDirect	0531-5131	International Congress Series	254		0,10%	72,89%
ScienceDirect	1359-0294	Current Opinion in Colloid AND Interface Science	253		0,10%	72,96%
ScienceDirect	1359-6462	Scripta Materialia	249	C.I.I.	0,09%	73,04%
ScienceDirect	0022-1759	Journal of Immunological Methods	249		0,09%	73,11%
ScienceDirect	0375-6742	Journal of Geochemical Exploration	249		0,09%	73,19%
ScienceDirect	0091-3057	Pharmacology Biochemistry and Behavior	248	C.I.I.	0,09%	73,27%
ScienceDirect	0047-259X	Journal of Multivariate Analysis	247	C.I.I.	0,09%	73,34%
ScienceDirect	0143-974X	Journal of Constructional Steel Research	246		0,09%	73,41%
ScienceDirect	0090-4295	Urology	245	C.I.I.	0,09%	73,49%
ScienceDirect	0042-6822	Virology	244	C.I.I.	0,09%	73,56%
ScienceDirect	0001-8686	Advances in Colloid and Interface Science	244	C.I.I.	0,09%	73,64%
ScienceDirect	0176-1617	Journal of Plant Physiology	244		0,09%	73,71%
ScienceDirect	1063-4584	Osteoarthritis and Cartilage	243		0,09%	73,78%
ScienceDirect	0165-0270	Journal of Neuroscience Methods	242	C.I.I.	0,09%	73,86%
ScienceDirect	0167-1987	Soil and Tillage Research	242	C.I.I.	0,09%	73,93%
ScienceDirect	1048-9843	The Leadership Quarterly	240	C.I.I.	0,09%	74,00%
ScienceDirect	0967-0637	Deep Sea Research Part I: Oceanographic Research Papers	240		0,09%	74,08%
ScienceDirect	1389-1286	Computer Networks	240	C.I.I.	0,09%	74,15%
ScienceDirect	0925-8388	Journal of Alloys and Compounds	240		0,09%	74,22%
ScienceDirect	0301-679X	Tribology International	239		0,09%	74,29%
ScienceDirect	0022-460X	Journal of Sound and Vibration	239		0,09%	74,37%
ScienceDirect	0954-6111	Respiratory Medicine	238		0,09%	74,44%
ScienceDirect	0959-437X	Current Opinion in Genetics AND Development	237		0,09%	74,51%
ScienceDirect	1368-8375	Oral Oncology	237		0,09%	74,58%
ScienceDirect	0167-7187	International Journal of Industrial Organization	237	C.I.I.	0,09%	74,65%
ScienceDirect	0005-1098	Automatica	234	C.I.I.	0,09%	74,72%
ScienceDirect	1350-4487	Radiation Measurements	234		0,09%	74,80%
ScienceDirect	0887-2333	Toxicology in Vitro	233		0,09%	74,87%
ScienceDirect	0888-7543	Genomics	232	C.I.I.	0,09%	74,94%
ScienceDirect	1872-4973	Forensic Science International: Genetics	232		0,09%	75,01%
ScienceDirect	0144-8609	Aquacultural Engineering	231		0,09%	75,08%
ScienceDirect	0301-0082	Progress in Neurobiology	231		0,09%	75,15%
ScienceDirect	0266-3538	Composites Science and Technology	231		0,09%	75,22%
ScienceDirect	0304-3959	Pain	230		0,09%	75,29%
ScienceDirect	0378-3820	Fuel Processing Technology	230		0,09%	75,36%



CONSORCIO DE BIBLIOTECAS UNIVERSITARIAS DE GALICIA

ScienceDirect	0167-8655	Pattern Recognition Letters	230	C.I.I.	0,09%	75,43%
ScienceDirect	0031-4056	Pedobiologia	230		0,09%	75,50%
ScienceDirect	0165-0327	Journal of Affective Disorders	228		0,09%	75,56%
ScienceDirect	1096-7192	Molecular Genetics and Metabolism	228	C.I.I.	0,09%	75,63%
ScienceDirect	0278-5846	Progress in Neuro-Psychopharmacology and Biological Psychiatry	227		0,09%	75,70%
ScienceDirect	0045-7949	Computers AND Structures	227	C.I.I.	0,09%	75,77%
ScienceDirect	0981-9428	Plant Physiology and Biochemistry	225	C.I.I.	0,09%	75,84%
ScienceDirect	1350-6307	Engineering Failure Analysis	225		0,09%	75,91%
ScienceDirect	1381-1177	Journal of Molecular Catalysis B: Enzymatic	224		0,08%	75,98%
ScienceDirect	0099-1333	The Journal of Academic Librarianship	224	C.I.I.	0,08%	76,04%
ScienceDirect	0039-6028	Surface Science	223		0,08%	76,11%
ScienceDirect	1350-4177	Ultrasonics Sonochemistry	223		0,08%	76,18%
ScienceDirect	1072-7515	Journal of the American College of Surgeons	223	C.I.I.	0,08%	76,25%
ScienceDirect	0926-3373	Applied Catalysis B: Environmental	221		0,08%	76,31%
ScienceDirect	1570-9639	Biochimica et Biophysica Acta (BBA) - Proteins and Proteomics	219	C.I.I.	0,08%	76,38%
ScienceDirect	1474-4422	The Lancet Neurology	217		0,08%	76,44%
ScienceDirect	0048-7333	Research Policy	217		0,08%	76,51%
ScienceDirect	0167-4889	Biochimica et Biophysica Acta (BBA) - Molecular Cell Research	216	C.I.I.	0,08%	76,58%
ScienceDirect	0890-6955	International Journal of Machine Tools and Manufacture	215	C.I.I.	0,08%	76,64%
ScienceDirect	1385-1101	Journal of Sea Research	215		0,08%	76,71%
ScienceDirect	0378-4754	Mathematics and Computers in Simulation	214	C.I.I.	0,08%	76,77%
ScienceDirect	0306-2619	Applied Energy	214		0,08%	76,84%
ScienceDirect	1524-153X	Operative Techniques in General Surgery	212		0,08%	76,90%
ScienceDirect	0393-0440	Journal of Geometry and Physics	211	C.I.I.	0,08%	76,96%
ScienceDirect	0925-5214	Postharvest Biology and Technology	211		0,08%	77,03%
ScienceDirect	1040-6182	Quaternary International	211		0,08%	77,09%
ScienceDirect	0165-2370	Journal of Analytical and Applied Pyrolysis	211		0,08%	77,16%
ScienceDirect	0002-9610	The American Journal of Surgery	210	C.I.I.	0,08%	77,22%
ScienceDirect	0046-8177	Human Pathology	208	C.I.I.	0,08%	77,28%
ScienceDirect	0166-0934	Journal of Virological Methods	208	C.I.I.	0,08%	77,35%
ScienceDirect	0022-1139	Journal of Fluorine Chemistry	207		0,08%	77,41%
ScienceDirect	0014-4835	Experimental Eye Research	206	C.I.I.	0,08%	77,47%
ScienceDirect	0262-8856	Image and Vision Computing	206	C.I.I.	0,08%	77,53%
ScienceDirect	0261-3069	Materials AND Design	205	C.I.I.	0,08%	77,59%
ScienceDirect	0924-8579	International Journal of Antimicrobial Agents	205		0,08%	77,66%
ScienceDirect	0926-6410	Cognitive Brain Research	204	C.I.I.	0,08%	77,72%
ScienceDirect	0003-3472	Animal Behaviour	204		0,08%	77,78%
ScienceDirect	1296-2074	Journal of Cultural Heritage	203		0,08%	77,84%
ScienceDirect	1077-3142	Computer Vision and Image Understanding	201	C.I.I.	0,08%	77,90%
ScienceDirect	0166-4328	Behavioural Brain Research	201	C.I.I.	0,08%	77,96%
ScienceDirect	0161-813X	NeuroToxicology	201		0,08%	78,02%
ScienceDirect	0149-7634	Neuroscience AND Biobehavioral Reviews	201		0,08%	78,09%
ScienceDirect	0003-682X	Applied Acoustics	200	C.I.I.	0,08%	78,15%
ScienceDirect	1044-0305	Journal of the American Society for Mass Spectrometry	199		0,08%	78,21%
ScienceDirect	1521-690X	Best Practice AND Research Clinical Endocrinology AND Metabolism	198		0,07%	78,27%
ScienceDirect	0022-2828	Journal of Molecular and Cellular Cardiology	198		0,07%	78,33%
ScienceDirect	0304-4165	Biochimica et Biophysica Acta (BBA) - General Subjects	198	C.I.I.	0,07%	78,39%
ScienceDirect	0378-8741	Journal of Ethnopharmacology	197	C.I.I.	0,07%	78,45%
ScienceDirect	0901-5027	International Journal of Oral and Maxillofacial Surgery	197		0,07%	78,51%
ScienceDirect	1043-6618	Pharmacological Research	196		0,07%	78,57%
ScienceDirect	1388-2481	Electrochemistry Communications	196		0,07%	78,62%
ScienceDirect	1471-4922	Trends in Parasitology	196		0,07%	78,68%
ScienceDirect	0021-9150	Atherosclerosis	196		0,07%	78,74%
ScienceDirect	0022-0248	Journal of Crystal Growth	195		0,07%	78,80%
ScienceDirect	0141-8130	International Journal of Biological Macromolecules	195	C.I.I.	0,07%	78,86%
ScienceDirect	0165-0114	Fuzzy Sets and Systems	195	C.I.I.	0,07%	78,92%
ScienceDirect	1369-7021	Materials Today	195		0,07%	78,98%
ScienceDirect	0966-842X	Trends in Microbiology	195	C.I.I.	0,07%	79,04%
ScienceDirect	1161-0301	European Journal of Agronomy	195	C.I.I.	0,07%	79,10%
ScienceDirect	0734-9750	Biotechnology Advances	195		0,07%	79,16%
ScienceDirect	1359-6101	Cytokine AND Growth Factor Reviews	194		0,07%	79,22%
ScienceDirect	0921-3449	Resources, Conservation and Recycling	193	C.I.I.	0,07%	79,27%
ScienceDirect	0969-806X	Radiation Physics and Chemistry	192		0,07%	79,33%
ScienceDirect	0165-4896	Mathematical Social Sciences	192	C.I.I.	0,07%	79,39%
ScienceDirect	0277-9536	Social Science AND Medicine	191	C.I.I.	0,07%	79,45%
ScienceDirect	0090-3019	Surgical Neurology	191		0,07%	79,51%
ScienceDirect	0167-9236	Decision Support Systems	190	C.I.I.	0,07%	79,56%
ScienceDirect	0168-1699	Computers and Electronics in Agriculture	190		0,07%	79,62%
ScienceDirect	0022-0728	Journal of Electroanalytical Chemistry	189		0,07%	79,68%
ScienceDirect	0021-9517	Journal of Catalysis	189		0,07%	79,74%
ScienceDirect	1369-5274	Current Opinion in Microbiology	189		0,07%	79,79%
ScienceDirect	0927-0248	Solar Energy Materials and Solar Cells	189		0,07%	79,85%
ScienceDirect	0165-1781	Psychiatry Research	188		0,07%	79,91%
ScienceDirect	0167-9317	Microelectronic Engineering	186		0,07%	79,96%

ScienceDirect	0015-0282	Fertility and Sterility	186	C.I.I.	0,07%	80,02%
---------------	-----------	-------------------------	-----	--------	-------	--------

de 436 títulos 232 son da C.I.I. (46,79%-53,21%) Con respecto ao 2006 aparece/n 436 títulos e desaparece/n 412. Hai un incremento de 24 título/s.
--

Springer Kluwer

editor	issn1	issn2	titulo	total	na C.I.I.	%	% acum
Springer Kluwer	1618-2642	1618-2650	Analytical and Bioanalytical Chemistry	1.679	C.I.I.	4,55%	3,64%
Springer Kluwer	0018-8158	1573-5117	Hydrobiologia	1.148	C.I.I.	3,11%	6,13%
Springer Kluwer	0025-3162	1432-1793	Marine Biology	794	C.I.I.	2,15%	7,86%
Springer Kluwer	0175-7598	1432-0614	Applied Microbiology and Biotechnology	784	C.I.I.	2,13%	9,56%
Springer Kluwer	1438-2377	1438-2385	European Food Research and Technology	501		1,36%	10,64%
Springer Kluwer	0009-5893	1612-1112	Chromatographia	484		1,31%	11,69%
Springer Kluwer	0049-6979	1573-2932	Water, Air, AND Soil Pollution	473	C.I.I.	1,28%	12,72%
Springer Kluwer	0724-8741	1573-904X	Pharmaceutical Research	466	C.I.I.	1,26%	13,73%
Springer Kluwer	0937-9827	1437-1596	International Journal of Legal Medicine	422	C.I.I.	1,14%	14,65%
Springer Kluwer	0029-8549	1432-1939	Oecologia	420	C.I.I.	1,14%	15,56%
Springer Kluwer	0167-6369	1573-2959	Environmental Monitoring and Assessment	369		1,00%	16,36%
Springer Kluwer	1388-6150	1572-8943	Journal of Thermal Analysis and Calorimetry	364	C.I.I.	0,99%	17,15%
Springer Kluwer	0932-0113	1432-1955	Parasitology Research	342	C.I.I.	0,93%	17,89%
Springer Kluwer	0022-2461	1573-4803	Journal of Materials Science	334	C.I.I.	0,91%	18,61%
Springer Kluwer	0007-4861	1432-0800	Bulletin of Environmental Contamination and Toxicology	333	C.I.I.	0,90%	19,34%
Springer Kluwer	0141-5492	1573-6776	Biotechnology Letters	333	C.I.I.	0,90%	20,06%
Springer Kluwer	0001-6268	0942-0940	Acta Neurochirurgica	331		0,90%	20,78%
Springer Kluwer	0032-079X	1573-5036	Plant and Soil	326	C.I.I.	0,88%	21,48%
Springer Kluwer	1385-0237	1573-5052	Plant Ecology	315	C.I.I.	0,85%	22,17%
Springer Kluwer	1566-0621	1572-9737	Conservation Genetics	296	C.I.I.	0,80%	22,81%
Springer Kluwer	0040-5752	1432-2242	TAG Theoretical and Applied Genetics	292	C.I.I.	0,79%	23,44%
Springer Kluwer	0090-4341	1432-0703	Archives of Environmental Contamination and Toxicology	286	C.I.I.	0,78%	24,06%
Springer Kluwer	0095-9782	1572-8927	Journal of Solution Chemistry	280	C.I.I.	0,76%	24,67%
Springer Kluwer	0340-6717	1432-1203	Human Genetics	278	C.I.I.	0,75%	25,27%
Springer Kluwer	0947-8396	1432-0630	Applied Physics A: Materials Science AND Processing	277	C.I.I.	0,75%	25,87%
Springer Kluwer	0022-2844	1432-1432	Journal of Molecular Evolution	276	C.I.I.	0,75%	26,47%
Springer Kluwer	0957-4530	1573-4838	Journal of Materials Science: Materials in Medicine	274	C.I.I.	0,74%	27,07%
Springer Kluwer	0937-0633	1432-1130	Fresenius' Journal of Analytical Chemistry	268		0,73%	27,65%
Springer Kluwer	0921-8971	1573-5176	Journal of Applied Phycology	250	C.I.I.	0,68%	28,19%
Springer Kluwer	0923-0750	1573-1111	Journal of Inclusion Phenomena and Macrocyclic Chemistry	245	C.I.I.	0,66%	28,72%
Springer Kluwer	0948-3349	1614-7502	The International Journal of Life Cycle Assessment	245		0,66%	29,25%
Springer Kluwer	0256-7040	1433-0350	Child's Nervous System	244		0,66%	29,78%
Springer Kluwer	0014-4819	1432-1106	Experimental Brain Research	236	C.I.I.	0,64%	30,30%
Springer Kluwer	1420-682X	1420-9071	Cellular and Molecular Life Sciences (CMLS)	236	C.I.I.	0,64%	30,81%
Springer Kluwer	0016-6707	1573-6857	Genetica	233	C.I.I.	0,63%	31,31%
Springer Kluwer	1436-2228	1436-2236	Marine Biotechnology	232	C.I.I.	0,63%	31,82%
Springer Kluwer	0960-3115	1572-9710	Biodiversity AND Conservation	230		0,62%	32,32%
Springer Kluwer	1367-5435	1476-5535	Journal of Industrial Microbiology and Biotechnology	229	C.I.I.	0,62%	32,81%
Springer Kluwer	0722-4060	1432-2056	Polar Biology	220		0,60%	33,29%
Springer Kluwer	0364-2313	1432-2323	World Journal of Surgery	215	C.I.I.	0,58%	33,76%
Springer Kluwer	0178-2762	1432-0789	Biology and Fertility of Soils	213	C.I.I.	0,58%	34,22%
Springer Kluwer	0302-766X	1432-0878	Cell and Tissue Research	212	C.I.I.	0,57%	34,68%
Springer Kluwer	0943-0105	1432-0495	Environmental Geology	207		0,56%	35,13%
Springer Kluwer	0032-0935	1432-2048	Planta	203	C.I.I.	0,55%	35,57%
Springer Kluwer	0959-3993	1573-0972	World Journal of Microbiology and Biotechnology	200	C.I.I.	0,54%	36,00%
Springer Kluwer	0303-402X	1435-1536	Colloid AND Polymer Science	197	C.I.I.	0,53%	36,43%
Springer Kluwer	0026-3672	1436-5073	Microchimica Acta	195	C.I.I.	0,53%	36,85%
Springer Kluwer	0012-186X	1432-0428	Diabetologia	194		0,53%	37,27%
Springer Kluwer	0340-5354	1432-1459	Journal of Neurology	193		0,52%	37,69%
Springer Kluwer	1439-6319	1439-6327	European Journal of Applied Physiology	192		0,52%	38,11%
Springer Kluwer	0195-928X	1572-9567	International Journal of Thermophysics	189	C.I.I.	0,51%	38,52%
Springer Kluwer	0721-7714	1432-203X	Plant Cell Reports	184	C.I.I.	0,50%	38,92%
Springer Kluwer	0930-2794	1432-2218	Surgical Endoscopy	184		0,50%	39,32%
Springer Kluwer	0925-2738	1573-5001	Journal of Biomolecular NMR	181		0,49%	39,71%
Springer Kluwer	0098-0331	1573-1561	Journal of Chemical Ecology	180		0,49%	40,10%
Springer Kluwer	1432-881X	1432-2234	Theoretical Chemistry Accounts: Theory, Computation, and Modeling (Theoretica Chimica Acta)	178		0,48%	40,49%
Springer Kluwer	0033-3158	1432-2072	Psychopharmacology	176	C.I.I.	0,48%	40,87%
Springer Kluwer	1387-3547	1573-1464	Biological Invasions	172		0,47%	41,24%
Springer Kluwer	0276-0460	1432-1157	Geo-Marine Letters	167	C.I.I.	0,45%	41,60%
Springer Kluwer	0921-2728	1573-0417	Journal of Paleolimnology	157		0,43%	41,94%
Springer Kluwer	0364-3190	1573-6903	Neurochemical Research	156	C.I.I.	0,42%	42,28%
Springer Kluwer	0168-2563	1573-515X	Biogeochemistry	156	C.I.I.	0,42%	42,62%

CONSORCIO DE BIBLIOTECAS UNIVERSITARIAS DE GALICIA

Springer Kluwer	0949-1775	1432-0517	Accreditation and Quality Assurance: Journal for Quality, Comparability and Reliability in Chemical Measurement	155		0,42%	42,96%
Springer Kluwer	1386-341X	1573-7403	Pituitary	154		0,42%	43,29%
Springer Kluwer	0340-4285	1572-901X	Transition Metal Chemistry	154	C.I.I.	0,42%	43,62%
Springer Kluwer	0167-6857	1573-5044	Plant Cell, Tissue and Organ Culture	150		0,41%	43,95%
Springer Kluwer	0046-5755	1572-9168	Geometriae Dedicata	144	C.I.I.	0,39%	44,26%
Springer Kluwer	0960-3166	1573-5184	Reviews in Fish Biology and Fisheries	143		0,39%	44,57%
Springer Kluwer	0033-5177	1573-7845	Quality and Quantity	139	C.I.I.	0,38%	44,87%
Springer Kluwer	0167-4412	1573-5028	Plant Molecular Biology	139	C.I.I.	0,38%	45,18%
Springer Kluwer	0300-8177	1573-4919	Molecular and Cellular Biochemistry	139		0,38%	45,48%
Springer Kluwer	0006-3134	1573-8264	Biologia Plantarum	137		0,37%	45,77%
Springer Kluwer	0938-2259	1432-0479	Economic Theory	137	C.I.I.	0,37%	46,07%
Springer Kluwer	0029-599X	0945-3245	Numerische Mathematik	135	C.I.I.	0,37%	46,36%
Springer Kluwer	0342-4642	1432-1238	Intensive Care Medicine	133		0,36%	46,65%
Springer Kluwer	0924-6460	1573-1502	Environmental and Resource Economics	133	C.I.I.	0,36%	46,94%
Springer Kluwer	0020-7128	1432-1254	International Journal of Biometeorology	131	C.I.I.	0,36%	47,23%
Springer Kluwer	0095-3628	1432-184X	Microbial Ecology	129	C.I.I.	0,35%	47,51%
Springer Kluwer	0165-7380	1573-7446	Veterinary Research Communications	129		0,35%	47,79%
Springer Kluwer	0021-891X	1572-8838	Journal of Applied Electrochemistry	127	C.I.I.	0,34%	48,06%
Springer Kluwer	0364-152X	1432-1009	Environmental Management	126		0,34%	48,33%
Springer Kluwer	0963-9292	1573-3017	Ecotoxicology	126		0,34%	48,61%
Springer Kluwer	1384-5640	1573-272X	Multibody System Dynamics	126	C.I.I.	0,34%	48,88%
Springer Kluwer	0300-9564	1435-1463	Journal of Neural Transmission	124		0,34%	49,15%
Springer Kluwer	0945-6317	1432-2307	Virchows Archiv	123		0,33%	49,42%
Springer Kluwer	1615-147X	1615-1488	Structural and Multidisciplinary Optimization	123	C.I.I.	0,33%	49,68%
Springer Kluwer	1615-7591	1615-7605	Bioprocess and Biosystems Engineering	122	C.I.I.	0,33%	49,95%
Springer Kluwer	0967-6120	1573-143X	Aquaculture International	122		0,33%	50,21%
Springer Kluwer	0340-6199	1432-1076	European Journal of Pediatrics	122		0,33%	50,48%
Springer Kluwer	0928-0707	1573-4846	Journal of Sol-Gel Science and Technology	122		0,33%	50,74%
Springer Kluwer	0012-3706	1530-0358	Diseases of the Colon AND Rectum	122	C.I.I.	0,33%	51,01%
Springer Kluwer	0165-0009	1573-1480	Climatic Change	122		0,33%	51,27%
Springer Kluwer	0003-6072	1572-9699	Antonie van Leeuwenhoek	120		0,33%	51,53%
Springer Kluwer	1434-5161	1435-232X	Journal of Human Genetics	119		0,32%	51,79%
Springer Kluwer	0378-2697	1615-6110	Plant Systematics and Evolution	118		0,32%	52,05%
Springer Kluwer	0340-5443	1432-0762	Behavioral Ecology and Sociobiology	116		0,31%	52,30%
Springer Kluwer	0001-6322	1432-0533	Acta Neuropathologica	114		0,31%	52,54%
Springer Kluwer	0020-7276	1432-1270	International Journal of Game Theory	112	C.I.I.	0,30%	52,79%
Springer Kluwer	0344-5607	1437-2320	Neurosurgical Review	109		0,30%	53,02%
Springer Kluwer	0931-041X	1432-198X	Pediatric Nephrology	103		0,28%	53,25%
Springer Kluwer	0934-9839	1435-6066	Research in Engineering Design	102	C.I.I.	0,28%	53,47%
Springer Kluwer	0014-2336	1573-5060	Euphytica	102		0,28%	53,69%
Springer Kluwer	0171-967X	1432-0827	Calcified Tissue International	102		0,28%	53,91%
Springer Kluwer	0047-2891	1573-6601	Journal of Youth and Adolescence	101	C.I.I.	0,27%	54,13%
Springer Kluwer	0147-5916	1573-2819	Cognitive Therapy and Research	99	C.I.I.	0,27%	54,35%
Springer Kluwer	0141-8955	1573-2665	Journal of Inherited Metabolic Disease	98		0,27%	54,56%
Springer Kluwer	0378-1909	1573-5133	Environmental Biology of Fishes	98		0,27%	54,77%
Springer Kluwer	0922-680X	1573-0468	Journal of Regulatory Economics	97	C.I.I.	0,26%	54,98%
Springer Kluwer	0721-832X	1435-702X	Graefe's Archive for Clinical and Experimental Ophthalmology	96	C.I.I.	0,26%	55,19%
Springer Kluwer	0163-2116	1573-2568	Digestive Diseases and Sciences	96		0,26%	55,40%
Springer Kluwer	0232-704X	1572-9060	Annals of Global Analysis and Geometry	95	C.I.I.	0,26%	55,60%
Springer Kluwer	0269-7653	1573-8477	Evolutionary Ecology	95		0,26%	55,81%
Springer Kluwer	1438-387X	1438-3888	Helgoland Marine Research	95		0,26%	56,02%
Springer Kluwer	0343-8651	1432-0991	Current Microbiology	94	C.I.I.	0,25%	56,22%
Springer Kluwer	0047-2468	1420-8997	Journal of Geometry	94	C.I.I.	0,25%	56,42%
Springer Kluwer	0043-7719	1432-5225	Wood Science and Technology	94	C.I.I.	0,25%	56,63%
Springer Kluwer	0966-0844	1572-8773	BioMetals	94	C.I.I.	0,25%	56,83%
Springer Kluwer	0938-7994	1432-1084	European Radiology	93		0,25%	57,03%
Springer Kluwer	0723-4864	1432-1114	Experiments in Fluids	92		0,25%	57,23%
Springer Kluwer	0923-9820	1572-9729	Biodegradation	91		0,25%	57,43%
Springer Kluwer	0170-0839	1436-2449	Polymer Bulletin	91		0,25%	57,63%
Springer Kluwer	0167-6806	1573-7217	Breast Cancer Research and Treatment	90		0,24%	57,82%
Springer Kluwer	0942-8925	1432-0509	Abdominal Imaging	90	C.I.I.	0,24%	58,02%
Springer Kluwer	0967-3849	1573-6849	Chromosome Research	88		0,24%	58,21%
Springer Kluwer	0921-2973	1572-9761	Landscape Ecology	88	C.I.I.	0,24%	58,40%
Springer Kluwer	0167-4366	1572-9680	Agroforestry Systems	88	C.I.I.	0,24%	58,59%
Springer Kluwer	0031-6768	1432-2013	Pflügers Archiv European Journal of Physiology	88	C.I.I.	0,24%	58,78%
Springer Kluwer	1432-9840	1435-0629	Ecosystems	87	C.I.I.	0,24%	58,97%
Springer Kluwer	1388-0764	1572-896X	Journal of Nanoparticle Research	87		0,24%	59,16%
Springer Kluwer	0091-0627	1573-2835	Journal of Abnormal Child Psychology	86	C.I.I.	0,23%	59,35%
Springer Kluwer	0946-2171	1432-0649	Applied Physics B: Lasers and Optics	86		0,23%	59,53%
Springer Kluwer	0948-6143	1432-119X	Histochemistry and Cell Biology	84		0,23%	59,71%
Springer Kluwer	1074-1542	1572-8854	Journal of Chemical Crystallography	84	C.I.I.	0,23%	59,90%
Springer Kluwer	1360-8185	1573-675X	Apoptosis	84		0,23%	60,08%
Springer Kluwer	0770-3198	1434-9949	Clinical Rheumatology	84		0,23%	60,26%

CONSORCIO DE BIBLIOTECAS UNIVERSITARIAS DE GALICIA

Springer Kluwer	0162-3257	1573-3432	Journal of Autism and Developmental Disorders	84		0,23%	60,44%
Springer Kluwer	0028-1042	1432-1904	Naturwissenschaften	82		0,22%	60,62%
Springer Kluwer	0272-4340	1573-6830	Cellular and Molecular Neurobiology	82		0,22%	60,80%
Springer Kluwer	0926-7220	1573-1901	Science AND Education	82	C.I.I.	0,22%	60,98%
Springer Kluwer	1072-3374	1573-8795	Journal of Mathematical Sciences	81	C.I.I.	0,22%	61,15%
Springer Kluwer	1061-9348	1608-3199	Journal of Analytical Chemistry	81		0,22%	61,33%
Springer Kluwer	1068-9265	1534-4681	Annals of Surgical Oncology	81		0,22%	61,50%
Springer Kluwer	0300-4864	1573-7381	Journal of Neurocytology	81		0,22%	61,68%
Springer Kluwer	0026-9247	1434-4475	Monatshefte für Chemie / Chemical Monthly	80		0,22%	61,85%
Springer Kluwer	0360-0025	1573-2762	Sex Roles	80		0,22%	62,03%
Springer Kluwer	0924-090X	1573-269X	Nonlinear Dynamics	79		0,21%	62,20%
Springer Kluwer	0929-1873	1573-8469	European Journal of Plant Pathology	79	C.I.I.	0,21%	62,37%
Springer Kluwer	0946-2716	1432-1440	Journal of Molecular Medicine	79		0,21%	62,54%
Springer Kluwer	0268-3768	1433-3015	The International Journal of Advanced Manufacturing Technology	79		0,21%	62,71%
Springer Kluwer	0028-1298	1432-1912	Naunyn-Schmiedeberg's Archives of Pharmacology	78	C.I.I.	0,21%	62,88%
Springer Kluwer	0939-6314	1617-6278	Vegetation History and Archaeobotany	77		0,21%	63,05%
Springer Kluwer	1619-7070	1619-7089	European Journal of Nuclear Medicine and Molecular Imaging	77	C.I.I.	0,21%	63,22%
Springer Kluwer	0947-7411	1432-1181	Heat and Mass Transfer	76		0,21%	63,38%
Springer Kluwer	0301-0449	1432-1998	Pediatric Radiology	76	C.I.I.	0,21%	63,55%
Springer Kluwer	0302-8933	1432-072X	Archives of Microbiology	76	C.I.I.	0,21%	63,71%
Springer Kluwer	0340-7594	1432-1351	Journal of Comparative Physiology A: Sensory, Neural, and Behavioral Physiology	75	C.I.I.	0,20%	63,87%
Springer Kluwer	0929-5593	1573-7527	Autonomous Robots	74		0,20%	64,03%
Springer Kluwer	0934-9723	1435-4373	European Journal of Clinical Microbiology AND Infectious Diseases	74	C.I.I.	0,20%	64,19%
Springer Kluwer	1040-0400	1572-9001	Structural Chemistry	73	C.I.I.	0,20%	64,35%
Springer Kluwer	1569-1705	1572-9826	Reviews in Environmental Science and Biotechnology	73		0,20%	64,51%
Springer Kluwer	1040-726X	1573-336X	Educational Psychology Review	72		0,20%	64,67%
Springer Kluwer	1066-5285	1573-9171	Russian Chemical Bulletin	72		0,20%	64,82%
Springer Kluwer	0021-8375	1439-0361	Journal of Ornithology	72		0,20%	64,98%
Springer Kluwer	0006-2928	1573-4927	Biochemical Genetics	71		0,19%	65,13%
Springer Kluwer	0261-8028	1573-4811	Journal of Materials Science Letters	71	C.I.I.	0,19%	65,29%
Springer Kluwer	0167-6903	1573-5087	Plant Growth Regulation	69		0,19%	65,44%
Springer Kluwer	0172-8172	1437-160X	Rheumatology International	68		0,18%	65,58%
Springer Kluwer	0018-3768	1436-736X	Holz als Roh- und Werkstoff	68	C.I.I.	0,18%	65,73%
Springer Kluwer	0169-4286	1573-5095	New Forests	67	C.I.I.	0,18%	65,88%
Springer Kluwer	0236-5731	1588-2780	Journal of Radioanalytical and Nuclear Chemistry	67		0,18%	66,02%
Springer Kluwer	1292-8941	1292-895X	The European Physical Journal E - Soft Matter	67		0,18%	66,17%
Springer Kluwer	1567-7230	1573-2940	Water, Air, and Soil Pollution: Focus	67		0,18%	66,31%
Springer Kluwer	0912-3814	1440-1703	Ecological Research	66		0,18%	66,46%
Springer Kluwer	0174-1578	1432-136X	Journal of Comparative Physiology B: Biochemical, Systemic, and Environmental Physiology	66		0,18%	66,60%
Springer Kluwer	0931-1890	1432-2285	Trees - Structure and Function	65	C.I.I.	0,18%	66,74%
Springer Kluwer	0920-5691	1573-1405	International Journal of Computer Vision	64		0,17%	66,88%
Springer Kluwer	0167-594X	1573-7373	Journal of Neuro-Oncology	64		0,17%	67,02%
Springer Kluwer	1569-8025	1572-8137	Journal of Computational Electronics	64		0,17%	67,16%
Springer Kluwer	0269-4042	1573-2983	Environmental Geochemistry and Health	63		0,17%	67,29%
Springer Kluwer	0920-654X	1573-4951	Journal of Computer-Aided Molecular Design	63	C.I.I.	0,17%	67,43%
Springer Kluwer	0927-5940	1573-6970	International Tax and Public Finance	61	C.I.I.	0,17%	67,56%
Springer Kluwer	0925-9864	1573-5109	Genetic Resources and Crop Evolution	61		0,17%	67,70%
Springer Kluwer	0940-6360	1432-1890	Mycorrhiza	61		0,17%	67,83%
Springer Kluwer	0165-5752	1573-5192	Systematic Parasitology	61	C.I.I.	0,17%	67,96%
Springer Kluwer	0172-8083	1432-0983	Current Genetics	60	C.I.I.	0,16%	68,09%
Springer Kluwer	0949-8257	1432-1327	Journal of Biological Inorganic Chemistry	60	C.I.I.	0,16%	68,22%
Springer Kluwer	1011-372X	1572-879X	Catalysis Letters	59		0,16%	68,35%
Springer Kluwer	0259-9791	1572-8897	Journal of Mathematical Chemistry	59		0,16%	68,48%
Springer Kluwer	1434-6044	1434-6052	The European Physical Journal C - Particles and Fields	59	C.I.I.	0,16%	68,60%
Springer Kluwer	1610-3653	1610-3661	Environmental Chemistry Letters	58		0,16%	68,73%
Springer Kluwer	0167-4544	1573-0697	Journal of Business Ethics	58		0,16%	68,86%
Springer Kluwer	0144-8463	1573-4935	Bioscience Reports	58		0,16%	68,98%
Springer Kluwer	0969-0239	1572-882X	Cellulose	58		0,16%	69,11%
Springer Kluwer	0937-941X	1433-2965	Osteoporosis International	58		0,16%	69,23%
Springer Kluwer	0941-1291	1436-2813	Surgery Today	57		0,15%	69,36%
Springer Kluwer	0303-8300	1573-0921	Social Indicators Research	57	C.I.I.	0,15%	69,48%
Springer Kluwer	1590-1874	1590-3478	Neurological Sciences	57		0,15%	69,60%
Springer Kluwer	1434-6028	1434-6036	The European Physical Journal B - Condensed Matter	57	C.I.I.	0,15%	69,73%
Springer Kluwer	1386-2588	1573-5125	Aquatic Ecology	56		0,15%	69,85%
Springer Kluwer	0254-5330	1572-9338	Annals of Operations Research	54	C.I.I.	0,15%	69,97%
Springer Kluwer	0039-7857	1573-0964	Synthese	54	C.I.I.	0,15%	70,08%
Springer Kluwer	0942-2056	1433-7347	Knee Surgery, Sports Traumatology, Arthroscopy	54		0,15%	70,20%

CONSORCIO DE BIBLIOTECAS UNIVERSITARIAS DE GALICIA

Springer Kluwer	1025-9112	1616-1068	Mine Water and the Environment	54		0,15%	70,32%
Springer Kluwer	1203-4754	1615-7109	Journal of Cutaneous Medicine and Surgery: Incorporating Medical and Surgical Dermatology	54		0,15%	70,44%
Springer Kluwer	1385-1314	1573-0867	Nutrient Cycling in Agroecosystems	54	C.I.I.	0,15%	70,55%
Springer Kluwer	0933-7954	1433-9285	Social Psychiatry and Psychiatric Epidemiology	54	C.I.I.	0,15%	70,67%
Springer Kluwer	0885-2545	1573-6997	Journal of Cultural Economics	54	C.I.I.	0,15%	70,79%
Springer Kluwer	0721-7595	1435-8107	Journal of Plant Growth Regulation	53		0,14%	70,90%
Springer Kluwer	0178-7675	1432-0924	Computational Mechanics	53	C.I.I.	0,14%	71,02%
Springer Kluwer	0169-3867	1572-8404	Biology and Philosophy	53	C.I.I.	0,14%	71,13%
Springer Kluwer	0340-5761	1432-0738	Archives of Toxicology	53	C.I.I.	0,14%	71,25%
Springer Kluwer	0304-8608	1432-8798	Archives of Virology	52		0,14%	71,36%
Springer Kluwer	0920-1742	1573-5168	Fish Physiology and Biochemistry	52	C.I.I.	0,14%	71,47%
Springer Kluwer	0944-1344	1614-7499	Environmental Science and Pollution Research	52		0,14%	71,59%
Springer Kluwer	0939-4451	1438-2199	Amino Acids	51		0,14%	71,70%
Springer Kluwer	1053-0509	1573-4994	Journal of Fluorescence	51	C.I.I.	0,14%	71,81%
Springer Kluwer	1070-4280	1608-3393	Russian Journal of Organic Chemistry	51		0,14%	71,92%
Springer Kluwer	0282-0080	1573-4986	Glycoconjugate Journal	51		0,14%	72,03%
Springer Kluwer	0175-7571	1432-1017	European Biophysics Journal	51		0,14%	72,14%
Springer Kluwer	0022-3239	1573-2878	Journal of Optimization Theory and Applications	51	C.I.I.	0,14%	72,25%
Springer Kluwer	0003-889X	1420-8938	Archiv der Mathematik	51	C.I.I.	0,14%	72,36%
Springer Kluwer	0018-1560	1573-174X	Higher Education	51	C.I.I.	0,14%	72,47%
Springer Kluwer	0944-1174	1435-5922	Journal of Gastroenterology	50		0,14%	72,58%
Springer Kluwer	0393-2990	1573-7284	European Journal of Epidemiology	50		0,14%	72,69%
Springer Kluwer	0344-5704	1432-0843	Cancer Chemotherapy and Pharmacology	49		0,13%	72,79%
Springer Kluwer	0918-9440	1618-0860	Journal of Plant Research	49		0,13%	72,90%
Springer Kluwer	0962-8819	1573-9368	Transgenic Research	49		0,13%	73,01%
Springer Kluwer	0957-5243	1573-7225	Cancer Causes and Control	49	C.I.I.	0,13%	73,11%
Springer Kluwer	0035-4511	1435-1528	Rheologica Acta	49		0,13%	73,22%
Springer Kluwer	0179-0358	1437-9813	Pediatric Surgery International	49		0,13%	73,33%
Springer Kluwer	0179-1958	1432-1262	International Journal of Colorectal Disease	49		0,13%	73,43%
Springer Kluwer	0009-3130	1573-8388	Chemistry of Natural Compounds	48		0,13%	73,54%
Springer Kluwer	0951-208X	1573-6784	Biotechnology Techniques	48		0,13%	73,64%
Springer Kluwer	1352-8505	1573-3009	Environmental and Ecological Statistics	48		0,13%	73,74%
Springer Kluwer	1059-7700	1573-3599	Journal of Genetic Counseling	47		0,13%	73,85%
Springer Kluwer	0026-9255	1436-5081	Monatshefte für Mathematik	47	C.I.I.	0,13%	73,95%
Springer Kluwer	0179-7158	1439-099X	Strahlentherapie und Onkologie	47		0,13%	74,05%
Springer Kluwer	0171-5216	1432-1335	Journal of Cancer Research and Clinical Oncology	47		0,13%	74,15%
Springer Kluwer	1610-2940	0948-5023	Journal of Molecular Modeling	47		0,13%	74,25%
Springer Kluwer	0010-3616	1432-0916	Communications in Mathematical Physics	46	C.I.I.	0,12%	74,35%
Springer Kluwer	0720-213X	1432-234X	Zoomorphology	46		0,12%	74,45%
Springer Kluwer	0932-8092	1432-1769	Machine Vision and Applications	45		0,12%	74,55%
Springer Kluwer	0930-7575	1432-0894	Climate Dynamics	45		0,12%	74,65%
Springer Kluwer	0957-7572	1573-1804	International Journal of Technology and Design Education	45		0,12%	74,75%
Springer Kluwer	0941-0643	1433-3058	Neural Computing AND Applications	45	C.I.I.	0,12%	74,84%
Springer Kluwer	0177-798X	1434-4483	Theoretical and Applied Climatology	45		0,12%	74,94%
Springer Kluwer	0340-2061	1432-0568	Anatomy and Embryology	45	C.I.I.	0,12%	75,04%
Springer Kluwer	0960-3174	1573-1375	Statistics and Computing	44	C.I.I.	0,12%	75,13%
Springer Kluwer	1070-3632	1608-3350	Russian Journal of General Chemistry	44		0,12%	75,23%
Springer Kluwer	1070-4272	1608-3296	Russian Journal of Applied Chemistry	44		0,12%	75,33%
Springer Kluwer	1023-8883	1573-2711	Tribology Letters	44		0,12%	75,42%
Springer Kluwer	0393-5965	1573-3025	Aerobiologia	44	C.I.I.	0,12%	75,52%
Springer Kluwer	1568-4555	1573-1863	Language Policy	44		0,12%	75,61%
Springer Kluwer	1431-4630		Zeitschrift für Lebensmitteluntersuchung und -Forschung A	43		0,12%	75,71%
Springer Kluwer	0892-7553	1572-8889	Journal of Insect Behavior	43		0,12%	75,80%
Springer Kluwer	0920-4741	1573-1650	Water Resources Management	43		0,12%	75,89%
Springer Kluwer	0885-6125	1573-0565	Machine Learning	43	C.I.I.	0,12%	75,98%
Springer Kluwer	0923-2958	1572-9478	Celestial Mechanics and Dynamical Astronomy	43	C.I.I.	0,12%	76,08%
Springer Kluwer	1059-0161	1573-7756	Journal of Archaeological Research	43		0,12%	76,17%
Springer Kluwer	1381-1991	1573-501X	Molecular Diversity	43		0,12%	76,26%
Springer Kluwer	0176-1714	1432-217X	Social Choice and Welfare	43	C.I.I.	0,12%	76,36%
Springer Kluwer	0172-9179	1612-4820	Facies	42		0,11%	76,45%
Springer Kluwer	0340-0727	1430-2772	Psychological Research	42		0,11%	76,54%
Springer Kluwer	1040-7278	1572-8862	Journal of Cluster Science	42	C.I.I.	0,11%	76,63%
Springer Kluwer	0882-8121	1573-8868	Mathematical Geology	42	C.I.I.	0,11%	76,72%
Springer Kluwer	1389-9155	1573-2606	Reviews in Endocrine AND Metabolic Disorders	42		0,11%	76,81%
Springer Kluwer	1436-6207	1436-6215	European Journal of Nutrition	41		0,11%	76,90%
Springer Kluwer	1380-3743	1572-9788	Molecular Breeding	41		0,11%	76,99%
Springer Kluwer	0927-2852	1572-9095	Applied Categorical Structures	40		0,11%	77,08%
Springer Kluwer	0937-4477	1434-4726	European Archives of Oto-Rhino-Laryngology	39		0,11%	77,16%
Springer Kluwer	0885-7474	1573-7691	Journal of Scientific Computing	39		0,11%	77,25%
Springer Kluwer	1366-638X	1572-9753	Journal of Insect Conservation	39		0,11%	77,33%
Springer Kluwer	0033-183X	1615-6102	Protoplasma	39		0,11%	77,42%
Springer Kluwer	0091-150X	1573-9031	Pharmaceutical Chemistry Journal	39		0,11%	77,50%

CONSORCIO DE BIBLIOTECAS UNIVERSITARIAS DE GALICIA

Springer Kluwer	1389-4986	1573-6695	Prevention Science	39		0,11%	77,59%
Springer Kluwer	1439-8621	1439-863X	Limnology	39		0,11%	77,67%
Springer Kluwer	1617-4615	1617-4623	Molecular Genetics and Genomics	38	C.I.I.	0,10%	77,75%
Springer Kluwer	0160-7715	1573-3521	Journal of Behavioral Medicine	38		0,10%	77,84%
Springer Kluwer	0022-0833	1573-2703	Journal of Engineering Mathematics	38	C.I.I.	0,10%	77,92%
Springer Kluwer	0022-2631	1432-1424	Journal of Membrane Biology	38		0,10%	78,00%
Springer Kluwer	0003-6838	1608-3024	Applied Biochemistry and Microbiology	38		0,10%	78,08%
Springer Kluwer	1072-5369	1573-7764	Journal of Archaeological Method and Theory	38		0,10%	78,17%
Springer Kluwer	0949-944X	1432-041X	Development Genes and Evolution	38		0,10%	78,25%
Springer Kluwer	0948-4280	1437-8213	Journal of Marine Science and Technology	38		0,10%	78,33%
Springer Kluwer	0570-1864	1432-0592	The Annals of Regional Science	37		0,10%	78,41%
Springer Kluwer	0364-2348	1432-2161	Skeletal Radiology	37	C.I.I.	0,10%	78,49%
Springer Kluwer	0324-4652	1588-2810	Neohelicon	37		0,10%	78,57%
Springer Kluwer	0258-8900	1432-0819	Bulletin of Volcanology	37		0,10%	78,65%
Springer Kluwer	0093-7711	1432-1211	Immunogenetics	36		0,10%	78,73%
Springer Kluwer	1386-7423	1572-8633	Medicine, Healthcare AND Philosophy	36		0,10%	78,81%
Springer Kluwer	1015-1621	1420-9055	Aquatic Sciences - Research Across Boundaries	36		0,10%	78,89%
Springer Kluwer	1070-3284	1608-3318	Russian Journal of Coordination Chemistry	35	C.I.I.	0,09%	78,96%
Springer Kluwer	0936-8051	1434-3916	Archives of Orthopaedic and Trauma Surgery	35		0,09%	79,04%
Springer Kluwer	0921-898X	1573-0913	Small Business Economics	35		0,09%	79,11%
Springer Kluwer	0028-3940	1432-1920	Neuroradiology	35	C.I.I.	0,09%	79,19%
Springer Kluwer	0009-3092	1573-8310	Chemistry and Technology of Fuels and Oils	35		0,09%	79,27%
Springer Kluwer	0301-486X	1573-0832	Mycopathologia	35		0,09%	79,34%
Springer Kluwer	0340-0131	1432-1246	International Archives of Occupational and Environmental Health	35		0,09%	79,42%
Springer Kluwer	0306-8919	1572-817X	Optical and Quantum Electronics	34	C.I.I.	0,09%	79,49%
Springer Kluwer	0166-8595	1573-5079	Photosynthesis Research	34		0,09%	79,56%
Springer Kluwer	0009-5915	1432-0886	Chromosoma	34	C.I.I.	0,09%	79,64%
Springer Kluwer	0038-6308	1572-9672	Space Science Reviews	34	C.I.I.	0,09%	79,71%
Springer Kluwer	0930-1038	1279-8517	Surgical and Radiologic Anatomy	34	C.I.I.	0,09%	79,79%
Springer Kluwer	0748-4518	1573-7799	Journal of Quantitative Criminology	34		0,09%	79,86%
Springer Kluwer	1617-4909	1617-4917	Personal and Ubiquitous Computing	34		0,09%	79,93%
Springer Kluwer	1612-4642	1439-0574	European Journal of Wildlife Research	34		0,09%	80,01%

de 306 títulos 131 son da C.I.I. (57,19%-42,81%)
Con respecto ao 2006 aparece/n 172 títulos e desaparece/n 9. Hai un incremento de 163 título/s.

Taylor

editor	issn1	issn2	titulo	total	na C.I.I.	%	% acum
Taylor	0264-0414	1466-447X	Journal of Sports Sciences	263	C.I.I.	3,05%	2,44%
Taylor	0039-7911	1532-2432	Synthetic Communications: An International Journal for Rapid Communication of Synthetic Organic Chemistry	254	C.I.I.	2,95%	4,80%
Taylor	0143-1161	1366-5901	International Journal of Remote Sensing	175	C.I.I.	2,03%	6,43%
Taylor	0265-203X		Food Additives AND Contaminants	167	C.I.I.	1,94%	7,98%
Taylor	1082-6076	1520-572X	Journal of Liquid Chromatography AND Related Technologies	130		1,51%	9,19%
Taylor	0737-3937	1532-2300	Drying Technology	124	C.I.I.	1,44%	10,34%
Taylor	0003-2719	1532-236X	Analytical Letters	119		1,38%	11,45%
Taylor	0306-7319	1029-0397	International Journal of Environmental Analytical Chemistry	117		1,36%	12,54%
Taylor	1061-0278	1029-0478	Supramolecular Chemistry	109		1,27%	13,55%
Taylor	0010-3624	1532-2416	Communications in Soil Science and Plant Analysis	108	C.I.I.	1,25%	14,55%
Taylor	1048-5252	1029-0311	Journal of Nonparametric Statistics	105	C.I.I.	1,22%	15,53%
Taylor	1094-2912	1532-2386	International Journal of Food Properties	105		1,22%	16,50%
Taylor	0022-2933	1464-5262	Journal of Natural History	101	C.I.I.	1,17%	17,44%
Taylor	0749-4467	1477-2256	Contemporary Music Review	99		1,15%	18,36%
Taylor	0026-8976	1362-3028	Molecular Physics: An International Journal in the Field of Chemical Physics	98	C.I.I.	1,14%	19,27%
Taylor	1461-6734	1469-2988	Attachment AND Human Development	96		1,11%	20,17%
Taylor	1093-4529	1532-4117	Journal of Environmental Science and Health, Part A	90	C.I.I.	1,04%	21,00%
Taylor	0967-0262	1469-4433	European Journal of Phycology	88	C.I.I.	1,02%	21,82%
Taylor	0950-0340	1362-3044	Journal of Modern Optics	87	C.I.I.	1,01%	22,63%
Taylor	0029-1951	1502-5292	Norsk Geografisk Tidsskrift - Norwegian Journal of Geography	83		0,96%	23,40%
Taylor	1475-3820	1478-3428	Bulletin of Spanish Studies: Hispanic Studies and Researches on Spain, Portugal and Latin America	82	C.I.I.	0,95%	24,16%
Taylor	0007-1668	1466-1799	British Poultry Science	80		0,93%	24,90%
Taylor	0092-7872	1532-4125	Communications in Algebra	78	C.I.I.	0,91%	25,63%
Taylor	1023-6198		Journal of Difference Equations and Applications	76		0,88%	26,34%
Taylor	0282-7581	1651-1891	Scandinavian Journal of Forest Research	75		0,87%	27,03%
Taylor	0193-2691	1532-2351	Journal of Dispersion Science and Technology	73		0,85%	27,71%
Taylor	0954-4828	1466-1837	Journal of Engineering Design	72		0,84%	28,38%
Taylor	1063-5157	1076-836X	Systematic Biology: A Bimonthly Publication of the Society of Systematic Biologists	71	C.I.I.	0,82%	29,04%
Taylor	0095-8972	1029-0389	Journal of Coordination Chemistry	71		0,82%	29,70%
Taylor	1462-2203	1469-994X	Nicotine AND Tobacco Research	71		0,82%	30,36%
Taylor	0360-1234	1532-4109	Journal of Environmental Science and Health, Part B	69		0,80%	31,00%
Taylor	1040-8398	1549-7852	Critical Reviews in Food Science and Nutrition	66	C.I.I.	0,77%	31,61%
Taylor	0268-0939	1464-5106	Journal of Education Policy	66	C.I.I.	0,77%	32,23%
Taylor	0300-9483	1502-3885	Boreas: An International Journal of Quaternary Research	64		0,74%	32,82%
Taylor	1350-4851	1466-4291	Applied Economics Letters	64	C.I.I.	0,74%	33,42%
Taylor	0149-6395	1520-5754	Separation Science and Technology	63		0,73%	34,00%
Taylor	0267-3037	1466-1810	Housing Studies	61		0,71%	34,57%
Taylor	1040-8347		Critical Reviews in Analytical Chemistry	61	C.I.I.	0,71%	35,14%
Taylor	1042-6507		Phosphorus, Sulfur, and Silicon: and the related elements	61		0,71%	35,70%
Taylor	0269-9931	1464-0600	Cognition AND Emotion	60		0,70%	36,26%
Taylor	1553-3174	1553-3182	Synthesis and Reactivity in Inorganic, Metal-Organic, and Nano-Metal Chemistry	59	C.I.I.	0,69%	36,81%
Taylor	0042-0980	1360-063X	Urban Studies	58	C.I.I.	0,67%	37,35%
Taylor	0003-6846	1466-4283	Applied Economics	56	C.I.I.	0,65%	37,87%
Taylor	0233-1888	1029-4910	Statistics: A Journal of Theoretical and Applied Statistics	56	C.I.I.	0,65%	38,39%
Taylor	1556-7036	1556-7230	Energy Sources, Part A: Recovery, Utilization, and Environmental Effects	56		0,65%	38,91%
Taylor	0269-9052		Brain Injury	53		0,62%	39,40%
Taylor	0963-7486	1465-3478	International Journal of Food Sciences and Nutrition	52		0,60%	39,88%
Taylor	0363-9045	1520-5762	Drug Development and Industrial Pharmacy	52	C.I.I.	0,60%	40,37%
Taylor	1360-7863		Aging AND Mental Health	51		0,59%	40,84%
Taylor	0022-250X	1545-5874	The Journal of Mathematical Sociology	50		0,58%	41,31%
Taylor	1352-7258	1470-3610	International Journal of Heritage Studies	49		0,57%	41,76%
Taylor	1071-7544	1521-0464	Drug Delivery	48		0,56%	42,21%
Taylor	0020-739X		International Journal of Mathematical Education in Science and Technology	48		0,56%	42,65%
Taylor	0277-2248	1029-0486	Toxicological AND Environmental Chemistry	47		0,55%	43,09%
Taylor	1365-8816		International Journal of Geographical Information	47		0,55%	43,53%



CONSORCIO DE BIBLIOTECAS UNIVERSITARIAS DE GALICIA

			Science				
Taylor	0020-7543	1366-588X	International Journal of Production Research	45	C.I.I.	0,52%	43,95%
Taylor	0001-8732	1460-6976	Advances in Physics	43		0,50%	44,35%
Taylor	0265-2048	1464-5246	Journal of Microencapsulation: Microcapsules, Liposomes, Nanoparticles, Microcells, Microspheres	43	C.I.I.	0,50%	44,74%
Taylor	1071-5762	1029-2470	Free Radical Research	43		0,50%	45,14%
Taylor	1040-6638		Polycyclic Aromatic Compounds: The Journal of the International Society for Polycyclic Aromatic Compounds	42		0,49%	45,53%
Taylor	0034-3404	1360-0591	Regional Studies	42	C.I.I.	0,49%	45,93%
Taylor	1060-1325	1520-5738	Journal of Macromolecular Science, Part A: Part A: Pure and Applied Chemistry	41		0,48%	46,31%
Taylor	0890-5436	1532-4249	Food Biotechnology	41	C.I.I.	0,48%	46,69%
Taylor	1380-3395	1744-411X	Journal of Clinical and Experimental Neuropsychology	41	C.I.I.	0,48%	47,07%
Taylor	1350-6285	1464-0716	Visual Cognition	41		0,48%	47,45%
Taylor	1403-6096	1651-2278	Housing, Theory and Society	41		0,48%	47,83%
Taylor	1558-3724	1558-3716	Polymer Reviews: Part C: Polymer Reviews	40		0,46%	48,20%
Taylor	1748-0930	1748-0949	International Journal of Mining, Reclamation and Environment	39		0,45%	48,56%
Taylor	1532-0383	1549-7887	Soil and Sediment Contamination: An International Journal	39		0,45%	48,93%
Taylor	1385-4046	1744-4144	The Clinical Neuropsychologist	39		0,45%	49,29%
Taylor	1064-3389	1547-6537	Critical Reviews in Environmental Science and Technology	39		0,45%	49,65%
Taylor	1061-186X	1029-2330	Journal of Drug Targeting	39	C.I.I.	0,45%	50,01%
Taylor	0968-7866	1029-0435	Molecular Membrane Biology	39		0,45%	50,38%
Taylor	1521-6543	1521-6551	IUBMB Life	37	C.I.I.	0,43%	50,72%
Taylor	0732-8303	1532-2327	Journal of Carbohydrate Chemistry	36		0,42%	51,05%
Taylor	0145-7632	1521-0537	Heat Transfer Engineering	36		0,42%	51,39%
Taylor	0360-1277	1521-0472	Educational Gerontology	35		0,41%	51,71%
Taylor	1502-2250	1502-2269	Scandinavian Journal of Hospitality and Tourism	35		0,41%	52,04%
Taylor	1444-2213	1740-9314	The Asia Pacific Journal of Anthropology	34		0,39%	52,36%
Taylor	1743-9760	1743-9779	The Journal of Positive Psychology: Dedicated to furthering research and promoting good practice	34		0,39%	52,67%
Taylor	1745-1000	1745-1019	Marine Biology Research	33	C.I.I.	0,38%	52,98%
Taylor	1369-1066	1464-5343	Venture Capital - An international journal of entrepreneurial finance: An International Journal of Entrepreneurial Finance	33		0,38%	53,29%
Taylor	0361-0926	1532-415X	Communications in Statistics - Theory and Methods	33	C.I.I.	0,38%	53,59%
Taylor	0950-0693	1464-5289	International Journal of Science Education	33	C.I.I.	0,38%	53,90%
Taylor	1746-1391	1536-7290	European Journal of Sport Science	32		0,37%	54,20%
Taylor	1528-7394	1087-2620	Journal of Toxicology and Environmental Health, Part A: Current Issues: Part A	31		0,36%	54,48%
Taylor	1525-7770	1532-2335	Nucleosides, Nucleotides and Nucleic Acids	31		0,36%	54,77%
Taylor	0963-8288	1464-5165	Disability AND Rehabilitation	31	C.I.I.	0,36%	55,06%
Taylor	0017-3134	1651-2049	Grana	31	C.I.I.	0,36%	55,35%
Taylor	0020-7594	1464-066X	International Journal of Psychology	30		0,35%	55,63%
Taylor	1747-0218	1747-0226	The Quarterly Journal of Experimental Psychology	30	C.I.I.	0,35%	55,91%
Taylor	1526-5161	1536-0075	The American Journal of Bioethics	29		0,34%	56,18%
Taylor	1542-1406	1563-5287	Molecular Crystals and Liquid Crystals	29		0,34%	56,44%
Taylor	1475-6366	1475-6374	Journal of Enzyme Inhibition and Medicinal Chemistry	29		0,34%	56,71%
Taylor	0098-6445	1563-5201	Chemical Engineering Communications	29		0,34%	56,98%
Taylor	0954-1446	1464-0635	European Journal of Cognitive Psychology	29	C.I.I.	0,34%	57,25%
Taylor	0898-2104	1532-2394	Journal of Liposome Research	28		0,33%	57,51%
Taylor	0570-4928	1520-569X	Applied Spectroscopy Reviews	28		0,33%	57,77%
Taylor	0735-2689	1549-7836	Critical Reviews in Plant Sciences	28	C.I.I.	0,33%	58,03%
Taylor	0038-7010	1532-2289	Spectroscopy Letters: An International Journal for Rapid Communication	28		0,33%	58,29%
Taylor	1057-610X	1521-0731	Studies in Conflict AND Terrorism	27		0,31%	58,54%
Taylor	1461-6742	1468-4470	International Feminist Journal of Politics	27		0,31%	58,80%
Taylor	1369-3786	1460-2709	Medical Mycology	27		0,31%	59,05%
Taylor	1354-6783	1464-0708	Thinking AND Reasoning	27		0,31%	59,30%
Taylor	1354-750X	1366-5804	Biomarkers: 10th Anniversary of the Journal	27		0,31%	59,55%
Taylor	1559-9612	1559-9620	International Journal of Optomechatronics	27		0,31%	59,80%
Taylor	1539-7734	1539-7742	Mechanics Based Design of Structures and Machines	26	C.I.I.	0,30%	60,04%
Taylor	1091-6466	1532-2459	Petroleum Science and Technology	26		0,30%	60,28%
Taylor	0275-7540	1029-0370	Chemistry and Ecology	26		0,30%	60,52%
Taylor	0149-0400	1521-0588	Leisure Sciences	26	C.I.I.	0,30%	60,77%
Taylor	0267-8292	1366-5855	Liquid Crystals	26		0,30%	61,01%
Taylor	1040-7782	1521-0634	Numerical Heat Transfer, Part A: Applications: An International Journal of Computation and Methodology	25		0,29%	61,24%
Taylor	1083-7450	1097-9867	Pharmaceutical Development and Technology	25	C.I.I.	0,29%	61,47%

CONSORCIO DE BIBLIOTECAS UNIVERSITARIAS DE GALICIA

Taylor	1468-3849	1743-9663	Turkish Studies	25		0,29%	61,70%
Taylor	1478-3363	1478-3371	Total Quality Management AND Business Excellence	24	C.I.I.	0,28%	61,93%
Taylor	1388-0209	1744-5116	Pharmaceutical Biology	24		0,28%	62,15%
Taylor	0191-9512	1547-6545	Ozone: Science AND Engineering: The Journal of the International Ozone Association	24		0,28%	62,37%
Taylor	0277-3813	1532-2319	Journal of Wood Chemistry and Technology	24	C.I.I.	0,28%	62,60%
Taylor	0301-4460	1464-5033	Annals of Human Biology	24	C.I.I.	0,28%	62,82%
Taylor	0165-0424	1744-4152	Aquatic Insects: International Journal of Freshwater Entomology	24	C.I.I.	0,28%	63,04%
Taylor	0965-8211	1464-0686	Memory	23		0,27%	63,26%
Taylor	1356-9783	1470-112X	Research in Drama Education	23		0,27%	63,47%
Taylor	1091-5818	1092-874X	International Journal of Toxicology	23		0,27%	63,68%
Taylor	1461-3808	1469-9893	Music Education Research	23		0,27%	63,90%
Taylor	1527-5922	1527-5930	Environmental Forensics	23		0,27%	64,11%
Taylor	1354-5701	1466-4372	Feminist Economics	22	C.I.I.	0,26%	64,32%
Taylor	1355-2074	1364-9221	Gender AND Development	22		0,26%	64,52%
Taylor	1042-5179	1029-2365	DNA Sequence: The Journal of DNA Mapping, Sequencing, and Analysis	22		0,26%	64,72%
Taylor	0042-3114	1744-5159	Vehicle System Dynamics: International Journal of Vehicle Mechanics and Mobility	22	C.I.I.	0,26%	64,93%
Taylor	0020-7179	1366-5820	International Journal of Control	22	C.I.I.	0,26%	65,13%
Taylor	0004-8674	1440-1614	Australian and New Zealand Journal of Psychiatry	21		0,24%	65,33%
Taylor	0144-235X	1366-591X	International Reviews in Physical Chemistry	21		0,24%	65,52%
Taylor	0144-3410	1469-5820	Educational Psychology: An International Journal of Experimental Educational Psychology	21	C.I.I.	0,24%	65,72%
Taylor	1025-3890	1607-8888	Stress: The International Journal on the Biology of Stress	21		0,24%	65,91%
Taylor	0958-9236	1465-3869	Journal of Gender Studies	21		0,24%	66,11%
Taylor	0891-6152	1521-0480	Experimental Heat Transfer	21		0,24%	66,30%
Taylor	1532-5008	1532-5016	Electric Power Components and Systems	21	C.I.I.	0,24%	66,50%
Taylor	1499-2027	1708-8186	International Journal of Audiology	21	C.I.I.	0,24%	66,69%
Taylor	8755-9129	1525-6103	Food Reviews International	20	C.I.I.	0,23%	66,88%
Taylor	1741-7538	1741-7546	Journal of Atmospheric AND Ocean Science	20		0,23%	67,07%
Taylor	0149-0451	1521-0529	Geomicrobiology Journal	20		0,23%	67,25%
Taylor	0143-6597	1360-2241	Third World Quarterly	19		0,22%	67,43%
Taylor	0269-1728	1464-5297	Social Epistemology: A Journal of Knowledge, Culture and Policy	19		0,22%	67,61%
Taylor	0043-8243	1470-1375	World Archaeology	19	C.I.I.	0,22%	67,78%
Taylor	0029-3652	1502-7678	Norwegian Archaeological Review	19		0,22%	67,96%
Taylor	0898-2112	1532-4222	Quality Engineering	19		0,22%	68,13%
Taylor	0738-8551	1549-7801	Critical Reviews in Biotechnology	19		0,22%	68,31%
Taylor	1028-6632	1477-2833	International Journal of Cultural Policy	19		0,22%	68,49%
Taylor	0961-3218	1466-4321	Building Research AND Information	19		0,22%	68,66%
Taylor	0965-4313	1469-5944	European Planning Studies	19	C.I.I.	0,22%	68,84%
Taylor	1064-1262		Reviews in Fisheries Science	19	C.I.I.	0,22%	69,02%
Taylor	1067-3229	1465-7309	Harvard Review of Psychiatry	19		0,22%	69,19%
Taylor	1743-5390	1743-5404	Nanotoxicology	19		0,22%	69,37%
Taylor	1522-6514	1549-7879	International Journal of Phytoremediation	19		0,22%	69,55%
Taylor	1740-8989	1742-5786	Physical Education and Sport Pedagogy	18	C.I.I.	0,21%	69,71%
Taylor	1042-8194	1029-2403	Leukemia and Lymphoma	18		0,21%	69,88%
Taylor	0960-2011	1464-0694	Neuropsychological Rehabilitation: An International Journal	18		0,21%	70,05%
Taylor	0955-3002	1362-3095	International Journal of Radiation Biology	18		0,21%	70,22%
Taylor	0883-9514	1087-6545	Applied Artificial Intelligence: An International Journal	18	C.I.I.	0,21%	70,38%
Taylor	0036-5548	1651-1980	Scandinavian Journal of Infectious Diseases	18		0,21%	70,55%
Taylor	0010-2202	1563-521X	Combustion Science and Technology	18		0,21%	70,72%
Taylor	0266-4763	1360-0532	Journal of Applied Statistics	18		0,21%	70,89%
Taylor	0271-3683	1460-2202	Current Eye Research	18		0,21%	71,05%
Taylor	0260-2938	1469-297X	Assessment AND Evaluation in Higher Education	18		0,21%	71,22%
Taylor	0261-4367	1466-4496	Leisure Studies	18	C.I.I.	0,21%	71,39%
Taylor	0264-2069	1743-9507	The Service Industries Journal	17	C.I.I.	0,20%	71,55%
Taylor	0360-2559	1525-6111	Polymer-Plastics Technology and Engineering	17		0,20%	71,70%
Taylor	1024-2422	1029-2446	Biocatalysis and Biotransformation	17		0,20%	71,86%
Taylor	1041-3200	1533-1571	Journal of Applied Sport Psychology	16	C.I.I.	0,19%	72,01%
Taylor	0361-0918	1532-4141	Communications in Statistics - Simulation and Computation	16	C.I.I.	0,19%	72,16%
Taylor	0309-3646	1746-1553	Prosthetics and Orthotics International	16		0,19%	72,31%
Taylor	0893-5696	1475-8059	Rethinking Marxism: A Journal of Economics, Culture AND Society	16		0,19%	72,46%
Taylor	0803-9488	1502-4725	Nordic Journal of Psychiatry	16		0,19%	72,60%
Taylor	0190-4167	1532-4087	Journal of Plant Nutrition	16		0,19%	72,75%
Taylor	0144-5340		History and Philosophy of Logic	16	C.I.I.	0,19%	72,90%
Taylor	1478-6435	1478-6443	Philosophical Magazine: First published in 1798	16		0,19%	73,05%
Taylor	1543-5075	1543-5083	International Journal of Green Energy	16		0,19%	73,20%
Taylor	1460-8944	1469-9907	National Identities	16		0,19%	73,35%

CONSORCIO DE BIBLIOTECAS UNIVERSITARIAS DE GALICIA

Taylor	1461-6718	1473-3269	European Journal of Housing Policy	16		0,19%	73,50%
Taylor	1360-8746	1743-9612	South European Society and Politics	16	C.I.I.	0,19%	73,65%
Taylor	1364-7830		Combustion Theory and Modelling	16		0,19%	73,79%
Taylor	1080-7039	1549-7860	Human and Ecological Risk Assessment: An International Journal	16		0,19%	73,94%
Taylor	1356-9775	1469-3631	Contemporary Politics	15		0,17%	74,08%
Taylor	1471-9037	1471-9045	Public Management Review	15		0,17%	74,22%
Taylor	0031-9104	1029-0451	Physics and Chemistry of Liquids: An International Journal	15	C.I.I.	0,17%	74,36%
Taylor	0785-3890	1365-2060	Annals of Medicine	15		0,17%	74,50%
Taylor	0379-7724	1469-8358	Higher Education in Europe	15	C.I.I.	0,17%	74,64%
Taylor	1062-936X	1029-046X	SAR and QSAR in Environmental Research	15		0,17%	74,78%
Taylor	1040-8444	1547-6898	Critical Reviews in Toxicology	15		0,17%	74,92%
Taylor	0969-594X	1465-329X	Assessment in Education: Principles, Policy AND Practice	14	C.I.I.	0,16%	75,05%
Taylor	1042-6914	1532-2475	Materials and Manufacturing Processes	14		0,16%	75,18%
Taylor	1041-1926	1469-3518	British Educational Research Journal	14	C.I.I.	0,16%	75,31%
Taylor	0003-3790	1464-505X	Annals of Science	14		0,16%	75,44%
Taylor	0020-7160	1029-0265	International Journal of Computer Mathematics	14		0,16%	75,57%
Taylor	0267-8373	1464-5335	Work AND Stress	14		0,16%	75,70%
Taylor	1543-8627	1543-8635	Research in Sports Medicine: An International Journal	14		0,16%	75,83%
Taylor	1478-6419	1029-2349	Natural Product Research: Formerly Natural Product Letters	14		0,16%	75,96%
Taylor	1355-4794	1465-3656	Neurocase	14		0,16%	76,09%
Taylor	1364-2529	1470-1154	Rethinking History: The Journal of Theory and Practice	13		0,15%	76,21%
Taylor	1381-3455	1744-4160	Archives Of Physiology And Biochemistry: Formerly Archives Internationales de Physiologie, de Biochimie et de Biophysique, founded in 1904	13		0,15%	76,33%
Taylor	1088-9868		Bioremediation Journal	13		0,15%	76,45%
Taylor	1473-4222	1473-4230	The Cerebellum	13		0,15%	76,57%
Taylor	1464-9365	1470-1197	Social AND Cultural Geography	13	C.I.I.	0,15%	76,69%
Taylor	0144-6193	1466-433X	Construction Management and Economics	13		0,15%	76,81%
Taylor	0233-1934	1029-4945	Optimization: A Journal of Mathematical Programming and Operations Research	13	C.I.I.	0,15%	76,94%
Taylor	0001-6489		Acta Oto-Laryngologica	13		0,15%	77,06%
Taylor	0034-6764	1470-1162	Review of Social Economy	13		0,15%	77,18%
Taylor	0963-8180	1468-4497	European Accounting Review	13	C.I.I.	0,15%	77,30%
Taylor	0307-5079	1470-174X	Studies in Higher Education	13		0,15%	77,42%
Taylor	0360-2532	1097-9883	Drug Metabolism Reviews	13		0,15%	77,54%
Taylor	0927-3972	1744-5132	Strabismus	13		0,15%	77,66%
Taylor	0957-1264	1469-9672	Journal of Wine Research	12		0,14%	77,77%
Taylor	0816-4649	1465-3303	Australian Feminist Studies	12		0,14%	77,88%
Taylor	0892-7022	1029-0435	Molecular Simulation	12		0,14%	77,99%
Taylor	0094-9655		Journal of Statistical Computation and Simulation	12		0,14%	78,11%
Taylor	0020-7454	1543-5245	International Journal of Neuroscience	12		0,14%	78,22%
Taylor	0304-3797	1469-5898	European Journal of Engineering Education	12		0,14%	78,33%
Taylor	0300-4430	1476-8275	Early Child Development and Care	12		0,14%	78,44%
Taylor	1478-6451	1478-646X	International Journal of Sustainable Energy	12	C.I.I.	0,14%	78,55%
Taylor	1470-3297	1470-3300	Innovations in Education and Teaching International	12		0,14%	78,66%
Taylor	1350-4622	1469-5871	Environmental Education Research	12	C.I.I.	0,14%	78,78%
Taylor	1125-0003	1748-5851	Italian Journal of Zoology	12		0,14%	78,89%
Taylor	1365-7305		Aquaculture Economics AND Management	12		0,14%	79,00%
Taylor	1556-3650	1556-9519	Clinical Toxicology	12	C.I.I.	0,14%	79,11%
Taylor	1745-039X		Archives of Animal Nutrition	12		0,14%	79,22%
Taylor	1741-5977	1741-5985	Inverse Problems in Science and Engineering	11		0,13%	79,32%
Taylor	1381-6810		Ophthalmic Genetics: The Official Publication of the International Society for Genetic Eye Disease, the European Paediatr	11		0,13%	79,43%
Taylor	1359-432X	1464-0643	European Journal of Work and Organizational Psychology	11		0,13%	79,53%
Taylor	1350-1763	1466-4429	Journal of European Public Policy	11	C.I.I.	0,13%	79,63%
Taylor	1079-9893	1532-4281	Journal of Receptors and Signal Transduction	11		0,13%	79,73%
Taylor	1093-7404	1521-6950	Journal of Toxicology and Environmental Health, Part B: Critical Reviews: Part B: Critical Reviews	11		0,13%	79,83%
Taylor	1463-4988	1539-4077	Aquatic Ecosystem Health AND Management: Official journal of the Aquatic Ecosystem Health and Management Society	11		0,13%	79,94%
Taylor	1461-6688	1470-1340	Tourism Geographies: An International Journal of Tourism Space, Place and Environment	11		0,13%	80,04%

de 233 títulos 75 son da C.I.I. (67,81%-32,19%)

Wiley

editor	issn1	issn2	titulo	total	na C.I.I.	%	% acum
Wiley	1433-7851	1521-3773	Angewandte Chemie International Edition	8.311	C.I.I.	19,81%	15,86%
Wiley	0947-6539	1521-3765	Chemistry - A European Journal	3.013	C.I.I.	7,18%	21,61%
Wiley	1434-193X	1099-0690	European Journal of Organic Chemistry	1.926	C.I.I.	4,59%	25,28%
Wiley	0935-9648	1521-4095	Advanced Materials	1.887	C.I.I.	4,50%	28,88%
Wiley	0021-9967	1096-9861	The Journal of Comparative Neurology	1.441	C.I.I.	3,44%	31,63%
Wiley	1434-1948	1099-0682	European Journal of Inorganic Chemistry	1.036	C.I.I.	2,47%	33,61%
Wiley	1616-301X	1616-3028	Advanced Functional Materials	886		2,11%	35,30%
Wiley	0006-3592	1097-0290	Biotechnology and Bioengineering	855	C.I.I.	2,04%	36,93%
Wiley	0021-8995	1097-4628	Journal of Applied Polymer Science	810	C.I.I.	1,93%	38,48%
Wiley	1615-9853	1615-9861	PROTEOMICS	742	C.I.I.	1,77%	39,90%
Wiley	0004-3591		Arthritis AND Rheumatism	678		1,62%	41,19%
Wiley	1615-4150	1615-4169	Advanced Synthesis AND Catalysis	668	C.I.I.	1,59%	42,46%
Wiley	0173-0835	1522-2683	Electrophoresis	662	C.I.I.	1,58%	43,73%
Wiley	0022-5142	1097-0010	Journal of the Science of Food and Agriculture	568		1,35%	44,81%
Wiley	0951-4198	1097-0231	Rapid Communications in Mass Spectrometry	541		1,29%	45,84%
Wiley	0268-2575	1097-4660	Journal of Chemical Technology AND Biotechnology	524	C.I.I.	1,25%	46,84%
Wiley	1613-6810	1613-6829	Small	491		1,17%	47,78%
Wiley	0022-3549	1520-6017	Journal of Pharmaceutical Sciences	475	C.I.I.	1,13%	48,69%
Wiley	1549-3296	1552-4965	Journal of Biomedical Materials Research Part A	464		1,11%	49,57%
Wiley	0044-2313	1521-3749	Zeitschrift für anorganische und allgemeine Chemie	463	C.I.I.	1,10%	50,46%
Wiley	0192-8651	1096-987X	Journal of Computational Chemistry	456	C.I.I.	1,09%	51,33%
Wiley	1615-9306	1615-9314	Journal of Separation Science	417	C.I.I.	0,99%	52,12%
Wiley	0008-543X	1097-0142	Cancer	407	C.I.I.	0,97%	52,90%
Wiley	0960-7692	1469-0705	Ultrasound in Obstetrics and Gynecology	406		0,97%	53,67%
Wiley	1439-4235	1439-7641	ChemPhysChem	373	C.I.I.	0,89%	54,38%
Wiley	1439-4227	1439-7633	ChemBioChem	367	C.I.I.	0,87%	55,08%
Wiley	0001-1541	1547-5905	AIChE Journal	356		0,85%	55,76%
Wiley	0018-019X	1522-2675	Helvetica Chimica Acta	345	C.I.I.	0,82%	56,42%
Wiley	0143-2095	1097-0266	Strategic Management Journal	323	C.I.I.	0,77%	57,04%
Wiley	0895-2477	1098-2760	Microwave and Optical Technology Letters	314	C.I.I.	0,75%	57,64%
Wiley	0931-7597	1522-2667	ChemInform	305		0,73%	58,22%
Wiley	0887-624X	1099-0518	Journal of Polymer Science Part A: Polymer Chemistry	296	C.I.I.	0,71%	58,78%
Wiley	0276-3478	1098-108X	International Journal of Eating Disorders	290		0,69%	59,34%
Wiley	0360-4012	1097-4547	Journal of Neuroscience Research	284		0,68%	59,88%
Wiley	1059-7794	1098-1004	Human Mutation	282		0,67%	60,42%
Wiley	0021-9541	1097-4652	Journal of Cellular Physiology	276		0,66%	60,94%
Wiley	0020-7136	1097-0215	International Journal of Cancer	275		0,66%	61,47%
Wiley	0894-3230	1099-1395	Journal of Physical Organic Chemistry	269	C.I.I.	0,64%	61,98%
Wiley	0885-6087	1099-1085	Hydrological Processes	265		0,63%	62,49%
Wiley	1022-1336	1521-3927	Macromolecular Rapid Communications	250		0,60%	62,97%
Wiley	0749-1581	1097-458X	Magnetic Resonance in Chemistry	246	C.I.I.	0,59%	63,43%
Wiley	0002-9483	1096-8644	American Journal of Physical Anthropology	244	C.I.I.	0,58%	63,90%
Wiley	0885-3185	1531-8257	Movement Disorders	239		0,57%	64,36%
Wiley	0364-5134	1531-8249	Annals of Neurology	239	C.I.I.	0,57%	64,81%
Wiley	0044-8249	1521-3757	Angewandte Chemie	238		0,57%	65,27%
Wiley	0899-8418	1097-0088	International Journal of Climatology	234	C.I.I.	0,56%	65,71%
Wiley	0029-5981	1097-0207	International Journal for Numerical Methods in Engineering	233	C.I.I.	0,56%	66,16%
Wiley	0197-9337	1096-9837	Earth Surface Processes and Landforms	226		0,54%	66,59%
Wiley	0730-2312	1097-4644	Journal of Cellular Biochemistry	226		0,54%	67,02%
Wiley	0277-6715	1097-0258	Statistics in Medicine	221	C.I.I.	0,53%	67,44%
Wiley	1552-4825	1552-4833	American Journal of Medical Genetics Part A	219		0,52%	67,86%
Wiley	0887-3585	1097-0134	Proteins: Structure, Function, and Bioinformatics	204		0,49%	68,25%
Wiley	0270-9139	1527-3350	Hepatology	195		0,46%	68,62%
Wiley	1052-7613	1099-0755	Aquatic Conservation: Marine and Freshwater Ecosystems	189		0,45%	68,98%
Wiley	0265-9247	1521-1878	BioEssays	184		0,44%	69,33%
Wiley	0031-613X	1096-9063	Pesticide Science	183		0,44%	69,68%
Wiley	1076-5174	1096-9888	Journal of Mass Spectrometry	183		0,44%	70,03%
Wiley	0885-6230	1099-1166	International Journal of Geriatric Psychiatry	178		0,42%	70,37%
Wiley	1059-910X	1097-0029	Microscopy Research and Technique	173		0,41%	70,70%
Wiley	1527-6465	1527-6473	Liver Transplantation	173		0,41%	71,03%
Wiley	1616-5187	1616-5195	Macromolecular Bioscience	172		0,41%	71,36%
Wiley	1022-1360	1521-3900	Macromolecular Symposia	170		0,41%	71,68%
Wiley	0006-3525	1097-0282	Biopolymers	170		0,41%	72,01%
Wiley	0007-1323	1365-2168	British Journal of Surgery	165	C.I.I.	0,39%	72,32%
Wiley	0894-1491	1098-1136	Glia	165		0,39%	72,64%
Wiley	1520-4081	1522-7278	Environmental Toxicology	159		0,38%	72,94%

CONSORCIO DE BIBLIOTECAS UNIVERSITARIAS DE GALICIA

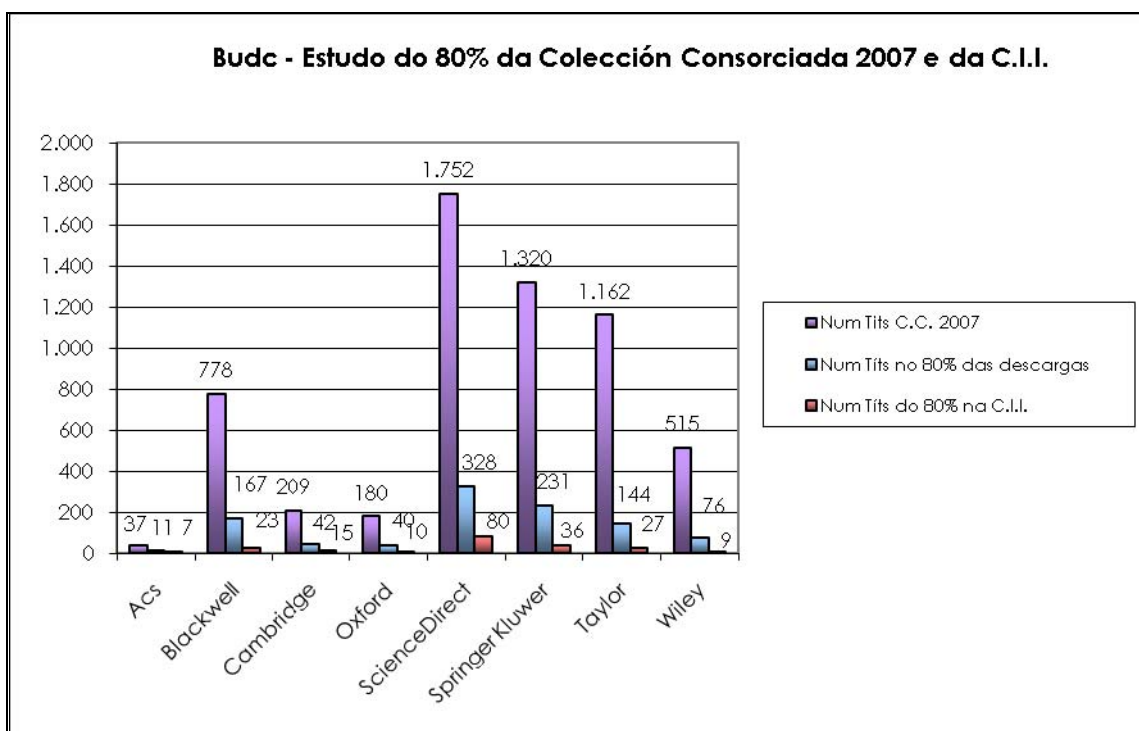
Wiley	0899-0042	1520-636X	Chirality	157		0,37%	73,24%
Wiley	0271-2091	1097-0363	International Journal for Numerical Methods in Fluids	155	C.I.I.	0,37%	73,54%
Wiley	0749-503X	1097-0061	Yeast	154	C.I.I.	0,37%	73,83%
Wiley	0268-2605	1099-0739	Applied Organometallic Chemistry	154	C.I.I.	0,37%	74,12%
Wiley	1552-4973	1552-4981	Journal of Biomedical Materials Research Part B: Applied Biomaterials	154		0,37%	74,42%
Wiley	1526-498X	1526-4998	Pest Management Science	153		0,36%	74,71%
Wiley	1552-4841	1552-485X	American Journal of Medical Genetics Part B: Neuropsychiatric Genetics	151		0,36%	75,00%
Wiley	1438-7697	1438-9312	European Journal of Lipid Science and Technology	150		0,36%	75,28%
Wiley	0959-8103	1097-0126	Polymer International	150	C.I.I.	0,36%	75,57%
Wiley	1058-8388	1097-0177	Developmental Dynamics	146		0,35%	75,85%
Wiley	0020-7608	1097-461X	International Journal of Quantum Chemistry	143	C.I.I.	0,34%	76,12%
Wiley	0198-6325	1098-1128	Medicinal Research Reviews	140		0,33%	76,39%
Wiley	1022-1352	1521-3935	Macromolecular Chemistry and Physics	140		0,33%	76,66%
Wiley	0170-4214	1099-1476	Mathematical Methods in the Applied Sciences	138	C.I.I.	0,33%	76,92%
Wiley	0014-2980	1521-4141	European Journal of Immunology	138	C.I.I.	0,33%	77,18%
Wiley	1040-0397	1521-4109	Electroanalysis	133	C.I.I.	0,32%	77,44%
Wiley	1085-3278	1099-145X	Land Degradation AND Development	131	C.I.I.	0,31%	77,69%
Wiley	0260-437X	1099-1263	Journal of Applied Toxicology	130	C.I.I.	0,31%	77,94%
Wiley	0197-8462	1521-186X	Bioelectromagnetics	130	C.I.I.	0,31%	78,18%
Wiley	1436-8730		Journal of Plant Nutrition and Soil Science / Zeitschrift für Pflanzenernährung und Bodenkunde	130	C.I.I.	0,31%	78,43%
Wiley	0022-3417	1096-9896	The Journal of Pathology	126		0,30%	78,67%
Wiley	1552-4922	1552-4930	Cytometry Part A	125	C.I.I.	0,30%	78,91%
Wiley	0362-2525	1097-4687	Journal of Morphology	124	C.I.I.	0,30%	79,15%
Wiley	0091-2751	1097-0096	Journal of Clinical Ultrasound	121		0,29%	79,38%
Wiley	0031-8965	1521-396X	physica status solidi a	118	C.I.I.	0,28%	79,60%
Wiley	0267-8179	1099-1417	Journal of Quaternary Science	117	C.I.I.	0,28%	79,83%
Wiley	1615-6846	1615-6854	Fuel Cells	116		0,28%	80,05%

de 93 títulos 47 son da C.I.I. (49,46%-50,54%) Con respecto ao 2006 aparece/n 16 títulos e desaparece/n 15. Hai un incremento de 1 título/s.
---

**Budc: Estudo do 80% da Colección Consorciada (C.C.) 2007 con respecto á Colección Inicial Impresa (C.I.I.)**

Editor	Univ	Num Tits C.C. 2007	Total Descargas por Paquete	Num Tits no 80% das descargas	% dos tits no 80% das descargas	Valor do 80% das descargas	Num Tits da C.I.I.	Num Tits do 80% na C.I.I.	Num Tits do 80% non na C.I.I.
Acs *	Budc	37	7.447	11	29,73%	5.958	11	7	4
Blackwell	Budc	778	7.984	167	21,47%	6.387	109	23	144
Cambridge	Budc	209	1.129	42	20,10%	903	33	15	27
Oxford	Budc	180	2.979	40	22,22%	2.383	38	10	30
ScienceDirect	Budc	1.752	49.458	328	18,72%	39.566	183	80	248
Springer									
Kluwer	Budc	1.320	8.934	231	17,50%	7.147	74	36	195
Taylor	Budc	1.162	2.430	144	12,39%	1.944	102	27	117
Wiley	Budc	515	6.957	76	14,76%	5.566	38	9	67

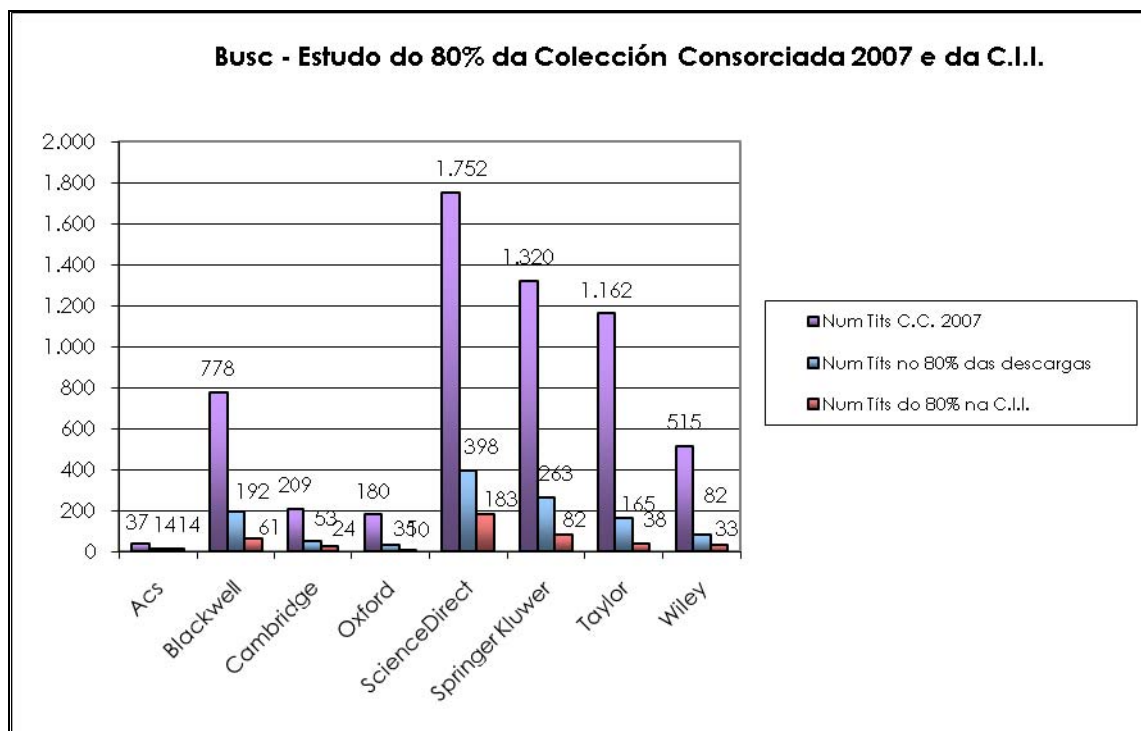
\* O número de descargas de ACS tería que incrementarse en 1.984 debido ás descargas de "ACS Journal Archives" que é un compendio dos títulos anteriores (retrospectivos ou cambios de título).



**Busc: Estudo do 80% da Colección Consorciada (C.C.) 2007 con respecto á Colección Inicial Impresa (C.I.I.)**

Editor	Univ	Num Tits C.C. 2007	Total Descargas por Paquete	Num Tits no 80% das descargas	% dos tits no 80% das descargas	Valor do 80% das descargas	Num Tits da C.I.I.	Num Tits do 80% na C.I.I.	Num Tits do 80% non na C.I.I.
Acs *	Busc	37	46.090	14	37,84%	36.872	24	14	0
Blackwell	Busc	778	27.704	192	24,68%	22.163	151	61	131
Cambridge	Busc	209	2.879	53	25,36%	2.303	52	24	29
Oxford	Busc	180	11.266	35	19,44%	9.012	47	10	25
ScienceDirect	Busc	1.752	181.803	398	22,72%	145.442	342	183	215
Springer Kluwer	Busc	1.320	24.734	263	19,92%	19.787	182	82	181
Taylor	Busc	1.162	5.309	165	14,20%	4.247	106	38	127
Wiley	Busc	515	34.084	82	15,92%	27.267	63	33	49

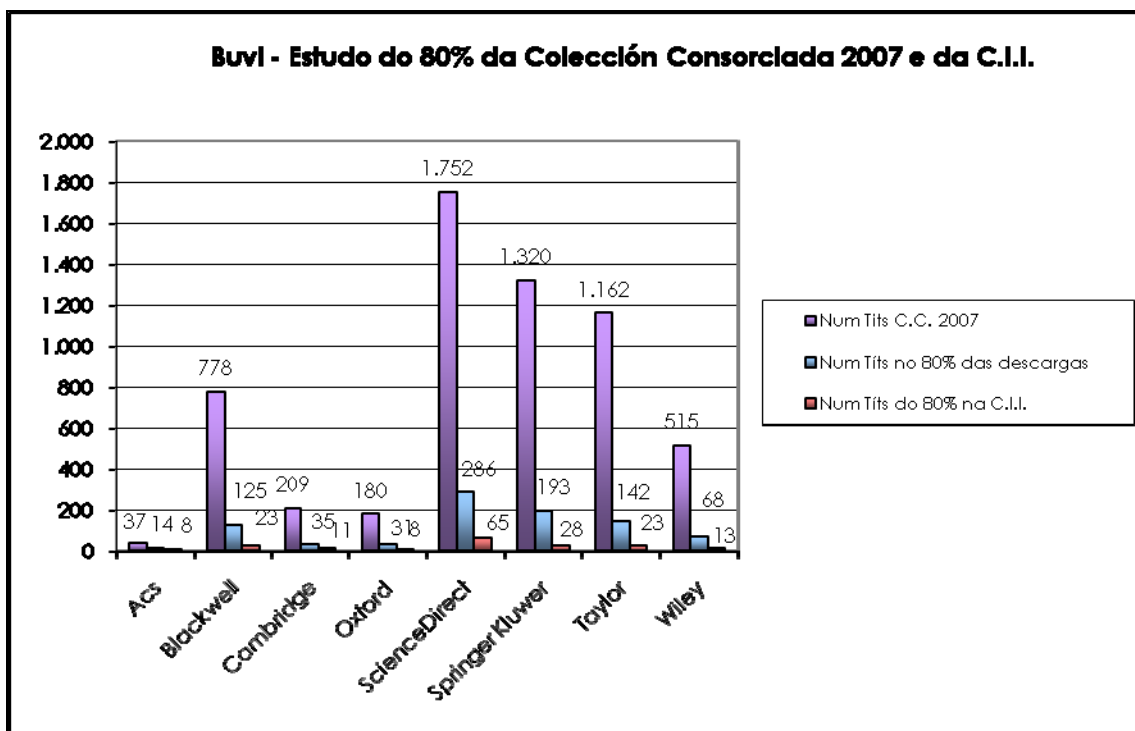
\* O número de descargas de ACS tería que incrementarse en 7.268 debido ás descargas de "ACS Journal Archives" que é un compendio dos títulos anteriores (retrospectivos ou cambios de título).



**Buvi: Estudo do 80% da Colección Consorciada (C.C.) 2007 con respecto á Colección Inicial Impresa (C.I.I.)**

Editor	Univ	Num Tits C.C. 2007	Total Descargas por Paquete	Num Tits no 80% das descargas	% dos tits no 80% das descargas	Valor do 80% das descargas	Num Tits da C.I.I.	Num Tits do 80% na C.I.I.	Num Tits do 80% non na C.I.I.
Acs *	Buvi	37	20.391	14	37,84%	16.312	13	8	6
Blackwell	Buvi	778	11.749	125	16,07%	9.399	67	23	102
Cambridge	Buvi	209	1.310	35	16,75%	1.048	26	11	24
Oxford	Buvi	180	3.137	31	17,22%	2.509	21	8	23
ScienceDirect	Buvi	1.752	98.874	286	16,32%	79.099	163	65	221
Springer Kluwer	Buvi	1.320	12.428	193	14,62%	9.942	71	28	165
Taylor	Buvi	1.162	3.022	142	12,22%	2.417	59	23	119
Wiley	Buvi	515	11.364	68	13,20%	9.091	30	13	55

\* O número de descargas de ACS tería que incrementarse en 3.548 debido ás descargas de "ACS Journal Archives" que é un compendio dos títulos anteriores (retrospectivos ou cambios de título).





## Anexo II. Listados dos títulos non consorciados cun uso medio ou alto (superior a 10 descargas)

Relación de títulos cun uso medio ou alto - BUGalicia: 88 títulos

Editor	Título	Issn	Total Descargas UDC	Total Descargas USC	Total Descargas UVI	Total Descargas
Blackwell	Hereditas	0018-0661	36	9	41	86
Blackwell	Econometrica	0012-9682	14	6	65	85
Blackwell	Journal of Thrombosis and Haemostasis	1538-7933	10	47	4	61
Blackwell	Journal of Cellular and Molecular Medicine	1582-1838	2	27	2	31
Blackwell	Aging Cell	1474-9718	5	14	2	21
Blackwell	CNS Neuroscience & Therapeutics	1755-5930	1	18	1	20
Blackwell	Waste Management and Research	0734-242X	5	4	7	16
Blackwell	Australian and New Zealand Journal of Psychiatry	0004-8674	5	9	0	14
Blackwell	Plant Biotechnology Journal	1467-7644	1	8	4	13
Blackwell	Journal of General Internal Medicine	0884-8734	1	10	1	12
Cambridge	Journal of Fluid Mechanics Digital Archive	1750-6859	103	22	79	204
Cambridge	Journal of Zoology	0952-8369	32	52	45	129
Cambridge	European Journal of Phycology	0967-0262	19	8	31	58
Cambridge	Psychophysiology	0048-5772	0	51	0	51
Cambridge	Biological Reviews	1464-7931	7	9	29	45
Cambridge	Developmental Medicine & Child Neurology	0012-1622	31	13	1	45
Cambridge	Meteorological Applications	1350-4827	2	14	23	39
Cambridge	Mycological Research	0953-7562	9	3	26	38
Cambridge	The Journal of Child Psychology and Psychiatry and Allied Disciplines	0021-9630	3	32	1	36
Cambridge	Bulletin of the London Mathematical Society	0024-6093	21	8	0	29
Cambridge	Animal Conservation	1367-9430	5	11	9	25
Cambridge	Proceedings of the London Mathematical Society	0024-6115	10	11	2	23
Cambridge	Annals of Human Genetics	0003-4800	2	11	3	16
Cambridge	Journal of Anatomy	0021-8782	2	11	3	16
Cambridge	Experimental Physiology	0958-0670	1	12	1	14
Cambridge	Journal of the London Mathematical Society	0024-6107	8	2	2	12
ScienceDirect	International Journal of Radiation Oncology*Biological*Physics	0360-3016	0	1.041	0	1.041
ScienceDirect	Seminars in Radiation Oncology	1053-4296	3	179	0	182
ScienceDirect	ICES Journal of Marine Science	1054-3139	56	47	37	140
ScienceDirect	American Journal of Cardiology, The	0002-9149	1	59	6	66
ScienceDirect	Biomass	0144-4565	0	0	50	50
ScienceDirect	Academic Radiology	1076-6332	5	8	6	19
ScienceDirect	Journal of Vascular Surgery	0741-5214	0	19	0	19
ScienceDirect	Chinese Journal of Analytical Chemistry	1872-2040	5	6	7	18
ScienceDirect	Journal of Gastrointestinal Surgery	1091-255X	0	17	0	17
ScienceDirect	Palaeoworld	1871-174X	15	0	2	17
ScienceDirect	Physica Medica	1120-1797	0	15	2	17
ScienceDirect	Brachytherapy	1538-4721	2	14	0	16
ScienceDirect	Journal of Fermentation and Bioengineering	0922-338X	0	0	15	15
ScienceDirect	Journal of Environmental Sciences	1001-0742	2	9	2	13

CONSORCIO DE BIBLIOTECAS UNIVERSITARIAS DE GALICIA

ScienceDirect	Biological Wastes	0269-7483	0	0	12	12
ScienceDirect	Chinese Chemical Letters	1001-8417	0	8	4	12
ScienceDirect	Environmental Pollution (1970)	0013-9327	0	0	12	12
ScienceDirect	Pedosphere	1002-0160	3	7	2	12
ScienceDirect	Heart Rhythm	1547-5271	4	7	0	11
ScienceDirect	Seminars in Nuclear Medicine	0001-2998	0	11	0	11
Oxford	Nucleic Acids Research	0305-1048	143	803	166	1.112
Oxford	Epidemiologic Reviews	0193-936X	4	35	0	39
Oxford	Nucleic Acids Symposium Series	0261-3166	2	34	1	37
Oxford	Evidence-based Complementary and Alternative Medicine	1741-427X	5	18	7	30
Oxford	DNA Research	1340-2838	5	18	4	27
Oxford	European Heart Journal Supplements	1520-765X	1	13	5	19
Oxford	JNCI Monographs	1052-6773	6	8	0	14
Springer Kluwer	Journal of the American Oil Chemists' Society	0003-021X	3	26	21	50
Springer Kluwer	Materials and Structures	1359-5997	37	0	3	40
Springer Kluwer	TEST	1133-0686	4	27	2	33
Springer Kluwer	Metallurgical and Materials Transactions A	1073-5623	5	0	21	26
Springer Kluwer	Metallurgical and Materials Transactions B	1073-5615	4	9	11	24
Springer Kluwer	Korean Journal of Chemical Engineering	0256-1115	3	13	4	20
Springer Kluwer	Acta Mathematica	0001-5962	11	8	0	19
Springer Kluwer	Molecular Biotechnology	1073-6085	2	15	2	19
Springer Kluwer	Applied Biochemistry and Biotechnology	0273-2289	6	12	0	18
Springer Kluwer	In Vitro Cellular & Developmental Biology - Plant	1054-5476	2	4	10	16
Springer Kluwer	Journal of Thermal Spray Technology	1059-9630	12	0	4	16
Springer Kluwer	Lipids	0024-4201	3	11	1	15
Springer Kluwer	European Review of Aging and Physical Activity	1813-7253	0	0	14	14
Springer Kluwer	The American Journal of Psychoanalysis	0002-9548	1	9	3	13
Springer Kluwer	Semiconductors	1063-7826	1	10	1	12
Springer Kluwer	Acta Physiologiae Plantarum	0137-5881	2	7	2	11
Springer Kluwer	Journal of General Internal Medicine	0884-8734	7	3	1	11
Springer Kluwer	Medical and Biological Engineering and Computing	0140-0118	3	1	7	11
Wiley	ChemMedChem	1860-7179	14	216	52	282
Wiley	Chemistry - An Asian Journal	1861-4728	51	73	20	144
Wiley	Biochemistry and Molecular Biology Education	1470-8175	19	63	45	127
Wiley	Biotechnology Journal	1860-6768	6	30	9	45
Wiley	Developmental Neurobiology	1932-8451	0	30	5	35
Wiley	CLEAN - Soil, Air, Water	1863-0650	13	8	9	30
Wiley	Contrast Media & Molecular Imaging	1555-4309	12	14	2	28
Wiley	PROTEOMICS - Clinical Applications	1862-8346	0	19	7	26
Wiley	Clinical Cardiology	0160-9289	1	23	0	24
Wiley	The Anatomical Record	1932-8486	0	13	6	19
Wiley	Laser & Photonics Reviews	1863-8880	1	14	1	16
Wiley	Meteorological Applications	1350-4827	4	9	1	14
Wiley	Journal of Hospital Medicine	1553-5592	0	11	2	13
Wiley	Asia-Pacific Journal of Chemical Engineering	1932-2135	6	5	1	12
Wiley	physica status solidi (RRL) - Rapid Research Letters	1862-6254	0	11	1	12
Wiley	Zeitschrift für anorganische und allgemeine Chemie 1892-1997	0044-2313	0	0	12	12

Wiley	Angewandte Chemie International Edition in English 1962 - 1997	0570-0833	0	2	9	11
-------	---	-----------	---	---	---	----

**Relación de títulos con uso medio ou alto - Budc: 18 títulos**

Editor	Uni	Título	Issn	Total Descargas UDC
Blackwell	Budc	Hereditas	0018-0661	36
Blackwell	Budc	Econometrica	0012-9682	14
Cambridge	Budc	Journal of Fluid Mechanics Digital Archive	1750-6859	103
Cambridge	Budc	Journal of Zoology	0952-8369	32
Cambridge	Budc	Developmental Medicine & Child Neurology	0012-1622	31
Cambridge	Budc	Bulletin of the London Mathematical Society	0024-6093	21
Cambridge	Budc	European Journal of Phycology	0967-0262	19
Oxford	Budc	Nucleic Acids Research	0305-1048	143
ScienceDirect	Budc	ICES Journal of Marine Science	1054-3139	56
ScienceDirect	Budc	Palaeoworld	1871-174X	15
Springer Kluwer	Budc	Materials and Structures	1359-5997	37
Springer Kluwer	Budc	Journal of Thermal Spray Technology	1059-9630	12
Springer Kluwer	Budc	Acta Mathematica	0001-5962	11
Wiley	Budc	Chemistry - An Asian Journal	1861-4728	51
Wiley	Budc	Biochemistry and Molecular Biology Education	1470-8175	19
Wiley	Budc	ChemMedChem	1860-7179	14
Wiley	Budc	CLEAN - Soil, Air, Water	1863-0650	13
Wiley	Budc	Contrast Media & Molecular Imaging	1555-4309	12

Relación de títulos cun uso medio ou alto - Busc: 48 títulos

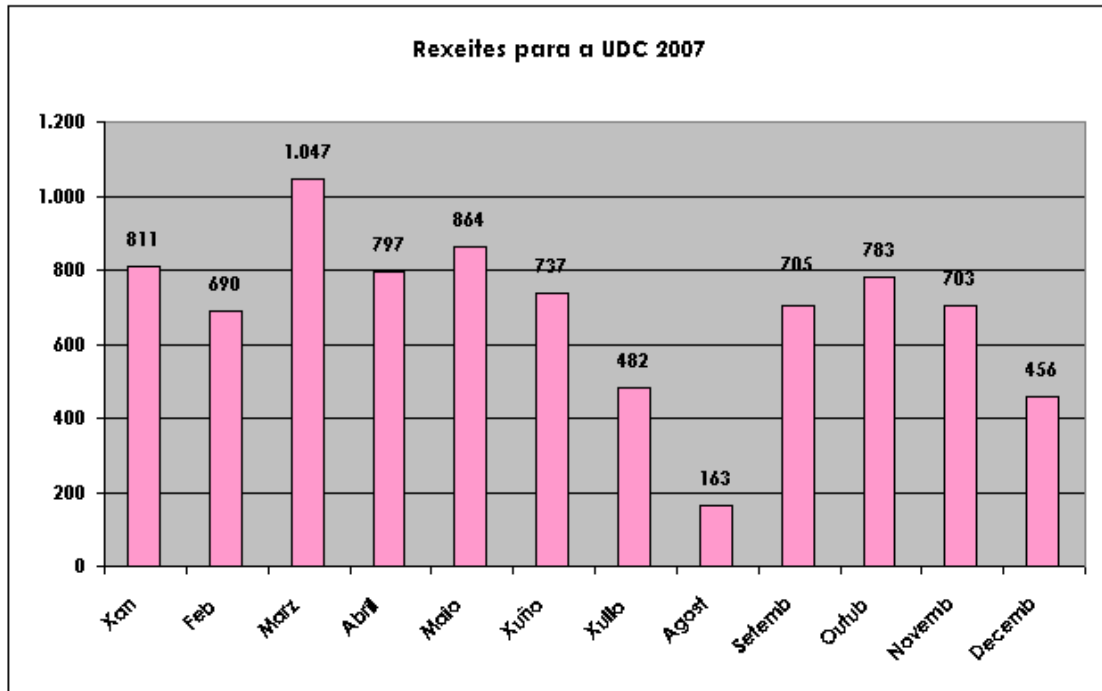
Editor	Uni	Título	Issn	Total Descargas USC
Blackwell	Busc	Journal of Thrombosis and Haemostasis	1538-7933	47
Blackwell	Busc	Journal of Cellular and Molecular Medicine	1582-1838	27
Blackwell	Busc	CNS Neuroscience & Therapeutics	1755-5930	18
Blackwell	Busc	Aging Cell	1474-9718	14
Cambridge	Busc	Journal of Zoology	0952-8369	52
Cambridge	Busc	Psychophysiology	0048-5772	51
Cambridge	Busc	The Journal of Child Psychology and Psychiatry and Allied Disciplines	0021-9630	32
Cambridge	Busc	Journal of Fluid Mechanics Digital Archive	1750-6859	22
Cambridge	Busc	Meteorological Applications	1350-4827	14
Cambridge	Busc	Developmental Medicine & Child Neurology	0012-1622	13
Cambridge	Busc	Experimental Physiology	0958-0670	12
Cambridge	Busc	Animal Conservation	1367-9430	11
Cambridge	Busc	Annals of Human Genetics	0003-4800	11
Cambridge	Busc	Journal of Anatomy	0021-8782	11
Cambridge	Busc	Proceedings of the London Mathematical Society	0024-6115	11
Oxford	Busc	Nucleic Acids Research	0305-1048	803
Oxford	Busc	Epidemiologic Reviews	0193-936X	35
Oxford	Busc	Nucleic Acids Symposium Series	0261-3166	34
Oxford	Busc	DNA Research	1340-2838	18
Oxford	Busc	Evidence-based Complementary and Alternative Medicine	1741-427X	18
Oxford	Busc	European Heart Journal Supplements	1520-765X	13
ScienceDirect	Busc	International Journal of Radiation Oncology*Biography*Physics	0360-3016	1.041
ScienceDirect	Busc	Seminars in Radiation Oncology	1053-4296	179
ScienceDirect	Busc	American Journal of Cardiology, The	0002-9149	59
ScienceDirect	Busc	ICES Journal of Marine Science	1054-3139	47
ScienceDirect	Busc	Journal of Vascular Surgery	0741-5214	19
ScienceDirect	Busc	Journal of Gastrointestinal Surgery	1091-255X	17
ScienceDirect	Busc	Physica Medica	1120-1797	15
ScienceDirect	Busc	Brachytherapy	1538-4721	14
ScienceDirect	Busc	Seminars in Nuclear Medicine	0001-2998	11
Springer Kluwer	Busc	TEST	1133-0686	27
Springer Kluwer	Busc	Journal of the American Oil Chemists' Society	0003-021X	26
Springer Kluwer	Busc	Molecular Biotechnology	1073-6085	15
Springer Kluwer	Busc	Korean Journal of Chemical Engineering	0256-1115	13
Springer Kluwer	Busc	Applied Biochemistry and Biotechnology	0273-2289	12
Springer Kluwer	Busc	Lipids	0024-4201	11
Wiley	Busc	ChemMedChem	1860-7179	216
Wiley	Busc	Chemistry - An Asian Journal	1861-4728	73
Wiley	Busc	Biochemistry and Molecular Biology Education	1470-8175	63
Wiley	Busc	Biotechnology Journal	1860-6768	30
Wiley	Busc	Developmental Neurobiology	1932-8451	30
Wiley	Busc	Clinical Cardiology	0160-9289	23
Wiley	Busc	PROTEOMICS - Clinical Applications	1862-8346	19
Wiley	Busc	Contrast Media & Molecular Imaging	1555-4309	14
Wiley	Busc	Laser & Photonics Reviews	1863-8880	14
Wiley	Busc	The Anatomical Record	1932-8486	13
Wiley	Busc	Journal of Hospital Medicine	1553-5592	11
Wiley	Busc	physica status solidi (RRL) - Rapid Research Letters	1862-6254	11

Relación de títulos cun uso medio ou alto - Busc: 22 títulos

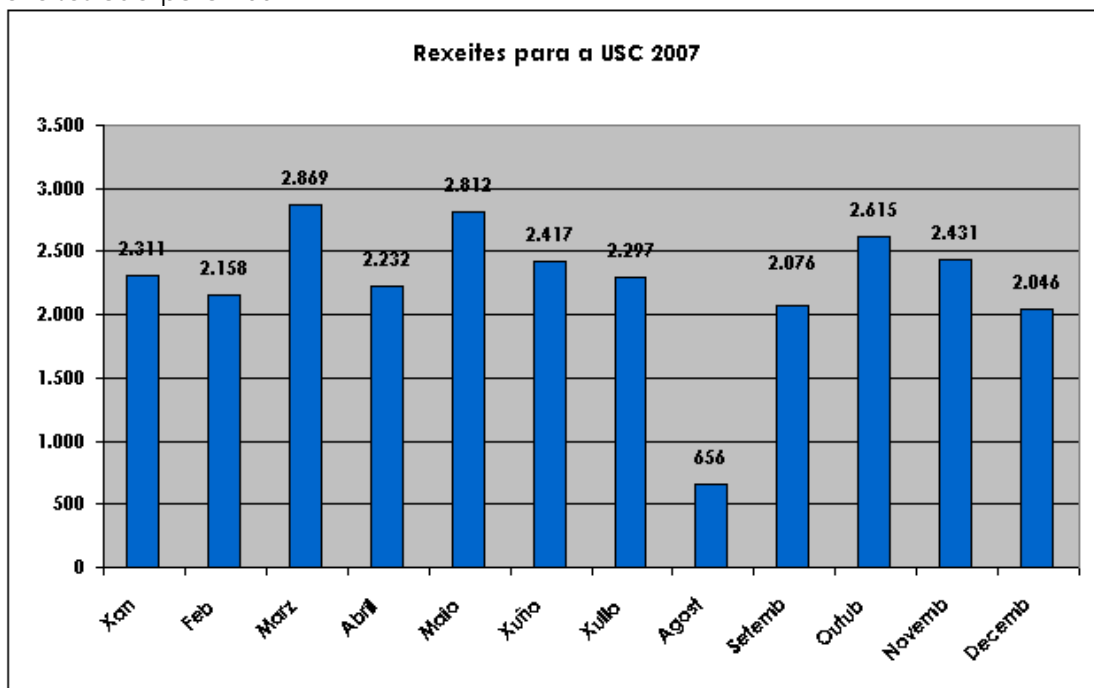
Editor	Uni	Título	Issn	Total Descargas UVI
Blackwell	Buvi	Econometrica	0012-9682	65
Blackwell	Buvi	Hereditas	0018-0661	41
Cambridge	Buvi	Journal of Fluid Mechanics Digital Archive	1750-6859	79
Cambridge	Buvi	Journal of Zoology	0952-8369	45
Cambridge	Buvi	European Journal of Phycology	0967-0262	31
Cambridge	Buvi	Biological Reviews	1464-7931	29
Cambridge	Buvi	Mycological Research	0953-7562	26
Cambridge	Buvi	Meteorological Applications	1350-4827	23
Oxford	Buvi	Nucleic Acids Research	0305-1048	166
ScienceDirect	Buvi	Biomass	0144-4565	50
ScienceDirect	Buvi	ICES Journal of Marine Science	1054-3139	37
ScienceDirect	Buvi	Journal of Fermentation and Bioengineering	0922-338X	15
ScienceDirect	Buvi	Biological Wastes	0269-7483	12
ScienceDirect	Buvi	Environmental Pollution (1970)	0013-9327	12
Springer Kluwer	Buvi	Journal of the American Oil Chemists' Society	0003-021X	21
Springer Kluwer	Buvi	Metallurgical and Materials Transactions A	1073-5623	21
Springer Kluwer	Buvi	European Review of Aging and Physical Activity	1813-7253	14
Springer Kluwer	Buvi	Metallurgical and Materials Transactions B	1073-5615	11
Wiley	Buvi	ChemMedChem	1860-7179	52
Wiley	Buvi	Biochemistry and Molecular Biology Education	1470-8175	45
Wiley	Buvi	Chemistry - An Asian Journal	1861-4728	20
Wiley	Buvi	Zeitschrift für anorganische und allgemeine Chemie 1892-1997	0044-2313	12

## Anexo III. Rexeites de Scifinder durante o ano 2007

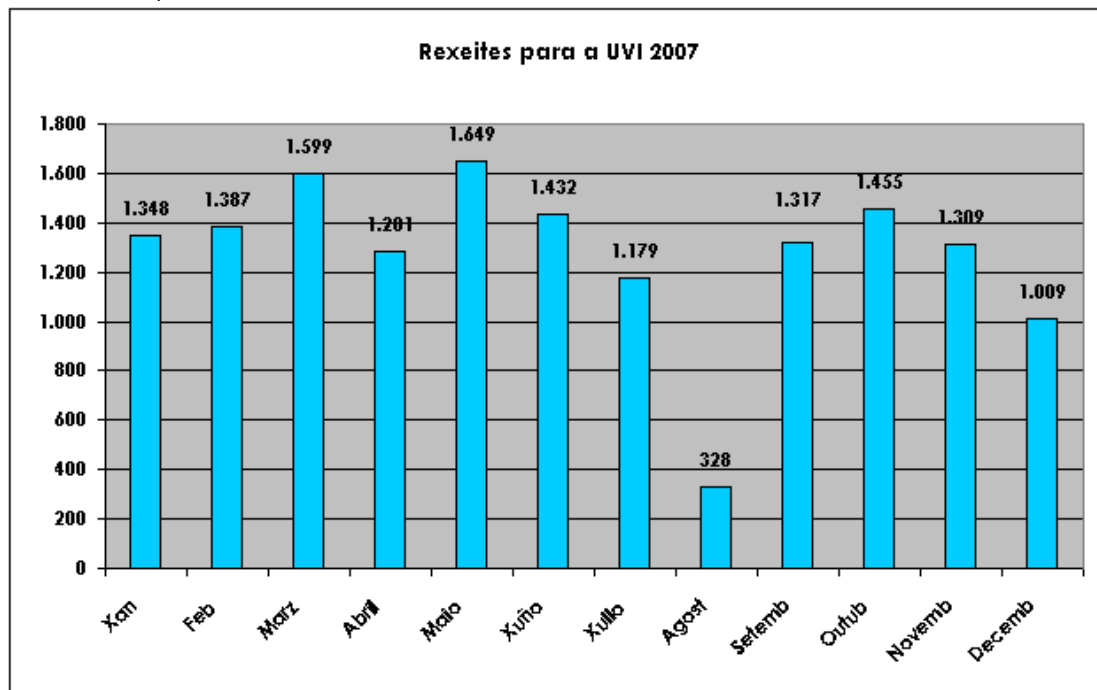
Rexeites UDC para 2007:



Rexeites USC para 2007:



Rexeites UVI para 2007:



A pesar do aumento nas licenzas, e o tratarse Scfinder da base de datos máis utilizada (próxima ás 190.000 consultas entre as tres universidades en 2007) segue a ter un elevado número de rexeites.

Sendo a USC a universidade que máis rexeites ten a esta base de datos superando en varios meses os 2.000, aínda contando co maio número de licenzas, un total de oito.

## Anexo IV. Distribución dos Usuarios Investigadores de BUGalicia por Ámbitos de Coñecemento

Departamentos	UDC		Ciencias Experimentais	Ensinanzas Técnicas	Ciencias Sociais e Xurídicas	Humanidades	Ciencias da Saúde
	Prof. e Invest.	3º Ciclo					
Ciencias da Saúde	42	17					59
Fisioterapia	34						34
Medicina	42	19					61
Biología Animal, Biología Vexetal e Ecoloxía	21	11	32				
Biología Celular e Ecoloxía			0				
Biología Celular e Molecular	26	44	70				
Física	18		18				
Química Analítica	21	14	35				
Química Física e Enxeñaría Química I	19	7	26				
Química Fundamental	28		28				
Educación Física e Deportiva	45	36	81				
Construcións Arquitectónicas	44	42		86			
Proxectos Arquitectónicos e Urbanismo	43			43			
Composición	15			15			
Computación	53	31		84			



Ciencias da Navegación e da Terra	34			34			
Construccións Navais	23			23			
Electrónica e Sistemas	28	11		39			
Enerxía e Propulsión Mariña	21	30		51			
Enxeñaría Industrial	46			46			
Enxeñaría Industrial II	38	24		62			
Enxeñaría Naval e Oceánica	20	13		33			
Métodos Matemáticos e de Representación	63	41		104			
Representación e Teoría Arquitectónica	28	17		45			
Tecnoloxía da Construción	50			50			
Tec. Ciencia da Representación Gráfica	16			16			
Tec. da Información e as Comunicaci3ns	31	19		50			
Matemáticas	41	4		45			
Filoloxía Española e Latina	31	24				55	
Filoloxía Inglesa	31	15				46	
Galego-Portugués, Francés e Lingüística	31	37				68	
Filosofía e Métodos de Investigación en Educación	16	11				27	
Humanidades	43	38				81	

Dereito Privado	28	54			82		
Dereito Público	32				32		
Dereito Público Especial	35				35		
Análise Económica e Administración de Empresas	42	13			55		
Economía Aplicada I	37	13			50		
Economía Aplicada II	25	5			30		
Economía Financeira e Contabilidade	28	8			36		
Socioloxía e Ciencia Política da Administración	33	18			51		
Didácticas Especiais	15				15		
Pedagogía e Didáctica das Ciencias Experimentais	29	20			49		
Psicoloxía	21	9			30		
Psicoloxía Evolutiva e da Educación	18	12			30		
Outros	5						
Instituto de Xeoloxía Isidro Parga Pondal		14	14				
Instituto Universitario de Ciencias da Saúde		140					140
Instituto Universitario de Estudos Irlandeses Amergin		13				13	

Departamentos	USC		Ciencias Experimentais	Ensinanzas Técnicas	Ciencias Sociais e Xurídicas	Humanidades	Ciencias da Saúde
	Profes e Invest	3º Ciclo					
Anatomía e Produción Animal	20	20					40
Anatomía Patolóxica e Ciencias Forenses	20	80					100
Ciencias da Saúde							0
Ciencias Morfolóxicas	23	51					74
Cirurgía	56	94					150
Dermatoloxía e Otorrinolaringoloxía	17	27					44
Enfermería	59	48					107
Estomatoloxía	48	22					70
Fisioloxía	38	32					70
Fisioterapia							0
Medicina	63	24					87
Microbioloxía e Parasitoloxía	36	70					106
Obstetricia e Xinecoloxía	22	5					27

Pediatría	34	46					80
Biología Funcional e Ciencias da Saúde							0
Psiquiatría, Radioloxía e Saúde Pública	51	48					99
Xenética	13	10	23				
Farmacoloxía	24	27					51
Biología Animal	23	56	79				
Biología Celular e Ecoloxía	24	31	55				
Botánica	22	25	47				
Edafoloxía e Química Agrícola	24	32	56				
Fisioloxía Vexetal	16	67	83				
Patoloxía Animal	17	60					77
Ciencias Clínicas Veterinarias	17	32					49

Farmacia e Tecnoloxía Farmacéutica	18	101					119
Física Aplicada	58	38	96				
Física de Partículas	27	14	41				
Física da Materia Condensada	20	30	50				
Bioquímica e Bioloxía Molecular	37	56	93				
Producción Vexetal	32	46		78			
Química Analítica, Nutrición e Bromatoloxía	49	68	117				
Química Física	42	34	76				
Química Fundamental			0				
Química Inorgánica	38	25	63				
Química Orgánica	45	86	131				
Electrónica e Computación	49	68		117			

Enxeñaría Agroforestal	92	49		141			
Enxeñaría Química	38	60		98			
Álgebra	18	4		22			
Análise Matemática	18	7		25			
Estatística e Investigación Operativa	23	58		81			
Matemática Aplicada	28	38		66			
Xeometría		8		8			
Filoloxía Alemana	14	42				56	
Filoloxía Francesa e Italiana	26	16				42	
Filoloxía Galega	54	15				69	
Filoloxía Inglesa	42	95				137	
Latín e Grego	23	36				59	
Lingua Española	19	20				39	
Literatura Española e Teoría da Literatura	40					40	

Literatura Española e Teoría da Literatura e Lingüística Xeral	1	33				34	
Filosofía e Antropoloxía Social	21	88				109	
Métodos de Investigación e Diagnóstico en Educación	15	97				112	
Lóxica e Filosofía Moral	13	100				113	
Historia I	24	4				28	
Historia Contemporánea e de América	22	25				47	
Historia da Arte	34	55				89	
Historia Medieval e Moderna	23	90				113	
Xeografía	22	72				94	
Dereito Común	21	36			57		

Dereito Mercantil e do Traballo	26	25			51		
Dereito Público e Teoría do Estado	27	54			81		
Dereito Público Especial	27	61			88		
Economía Aplicada	44	57			101		
Economía Financeira e Contabilidade	33	22			55		
Economía Cuantitativa	34				34		
Fundamentos da Análise Económica	24	7			31		
Historia e Institucións Económicas	13	127			140		
Métodos Cuantitativos para a Economía e a Empresa		50			50		



Organización de Empresas e Comercialización	32	26			58		
Socioloxía	14	14			28		
Socioloxía e Ciencia Política da Administración	17				17		
Ciencias da Comunicación	40	112			152		
Ciencias Políticas e Administración		101			101		
Teoría da Educac, Historia educat e Pedagogía Social	23	124			147		
Didáctica da Expresión Musical Plástica e Corporal	22	0			22		

Did. Lingua e Literatura e das Ciencias Sociais	15	4			19		
Didáctica das Ciencias Experimentais	14	32			46		
Didáctica e Organización Escolar	23	102			125		
Psicoloxía Social, Básica e Metodolóxica	40	58			98		
Psicoloxía Clínica e Psicobioloxía	33	83			116		
Psicoloxía Evolutiva e da Educación	21	41			62		
Psicoloxía Evolutiva e Comunicación					0		
Departamento Non Determinado	8						
Instituto de Acuicultura	2	20	22				
IDEGA (Instituto de Estudos e Desenvolvemento de Galicia)	1	24			25		

Instituto de Cerámica	1	0	1				
Instituto de Investigacións Tecnolóxicas	3	0		3			
Instituto de biodiversidade agrario e desenvolvemento rural	1	0	1				
Instituto de Investigacións e Análises Alimentarias	1		1				
Instituto Galego de Física de Altas Enerxías	1		1				
Observatorio Astronómico Ramón María Aller	1		1				
Instituto de Farmacia Industrial	1	1	2				
Rede de Infraestructuras de Apoio á Investigación e ó Desenvolvemento Tecnolóxico	1		1				
Unidade de espectrometría de masas	1		1				
Instituto de Medicina Legal	5						5

Departamentos	UVIGO		Ciencias Experimentais	Ensinanzas Técnicas	Ciencias Sociais e Xuridicas	Humanidades	Ciencias da Saúde
	Prof	3º Ciclo					
Biología Funcional e Ciencias da Saúde	70	87					157
Biología Vexetal e Ciencias do Solo	43	15	58				
Ecoloxía e Biología Animal	89	24	113				
Física Aplicada	60	51	111				
Bioquímica, Xenética e Inmunoloxía	57	166	223				
Química Analítica e Alimentaria	34	40	74				
Química Física	26	8	34				
Química Inorgánica	20	21	41				
Química Orgánica	34		34				

Xeociencias Mariñas e Ordenación do Territorio	23	11	34			
Informática	63	49		112		
Deseño na Enxeñería	37	15		52		
Enxeñería de Sistemas e Automática	30			30		
Enxeñería Eléctrica	35	11		46		
Enx.dos Materiais, Mecánica Apl. e Construcción	36	12		48		
Enx. Recursos Naturais e Medio Ambientais	38	35		73		
Enx. Mecánica, Máquinas, Motores Térm. e Fluidos	45	13		58		
Enxeñaría Química	48	24		72		
Enxeñaría Telemática	39	65		104		

Tecnoloxía Electrónica	43			43		
Tec. da Información e as Comunicaci3ns	1			1		
Teoría do Sinal e Comunicaci3ns	62	61		123		
Estatística e Investigación Operativa	26	5		31		
Matemática Aplicada I	18	3		21		
Matemática Aplicada II	17	2		19		
Matemáticas	21			21		
Pintura	20				20	
Escultura	15	37			52	
Debuxo	19				19	
Filoloxía Galega e Latina	35	17			52	
Filoloxía Inglesa, Francesa e Alemana	59	31			90	

Lingua Española	17	16				33	
Literatura Española e Teoría da Literatura	18					18	
Tradución e Lingüística	54	44				98	
Historia, Arte e Xeografía	32	25				57	
Dereito Privado	37	38			75		
Dereito Público	34	55			89		
Dereito Público Especial, Comunicación Audiovisual e Publicidade	74	93			167		
Economía Aplicada	50	6			56		
Economía Aplicada I	1				1		
Economía Financeira e Contabilidade	63	30			93		

Fundamentos da Análise Económica e Historia e Institucións Económicas	32				32		
Organización de Empresas e Marketing	95	21			116		
Socioloxía, Ciencia Política e da Administración e Filosofía	29				29		
Análise e Intervención Psicosocioeducativa	36	23			59		
Didácticas Especiais	68	81			149		
Didáctica, Organización Escolar e Métodos de Investigación	28	37			65		
Psicoloxía Evolutiva e Comunicación	25	32			57		
Medio Ambiente	1			1			